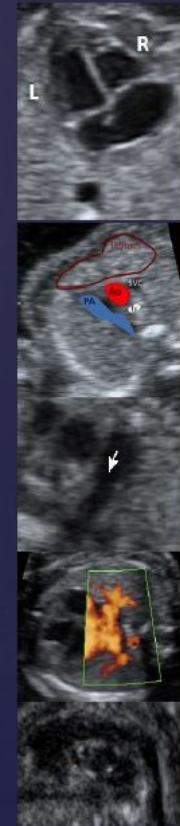
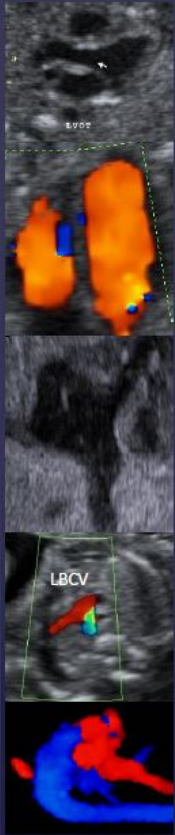


AIUM Image Library: Fetal Echocardiography



*The American Institute of Ultrasound in Medicine thanks GE for providing equipment used to obtain some of the images within this document.
We appreciate their commitment and generous support for ultrasound education.*

Second Trimester Cardiac Apex Position

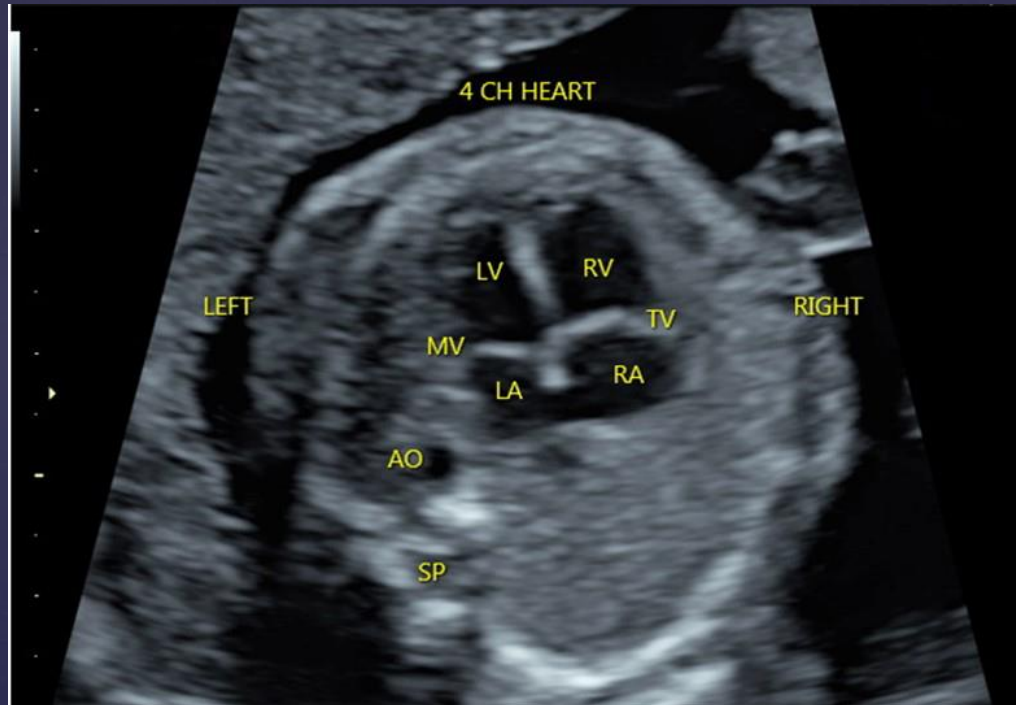


Second Trimester
Situs: Breech Presentation



Second Trimester

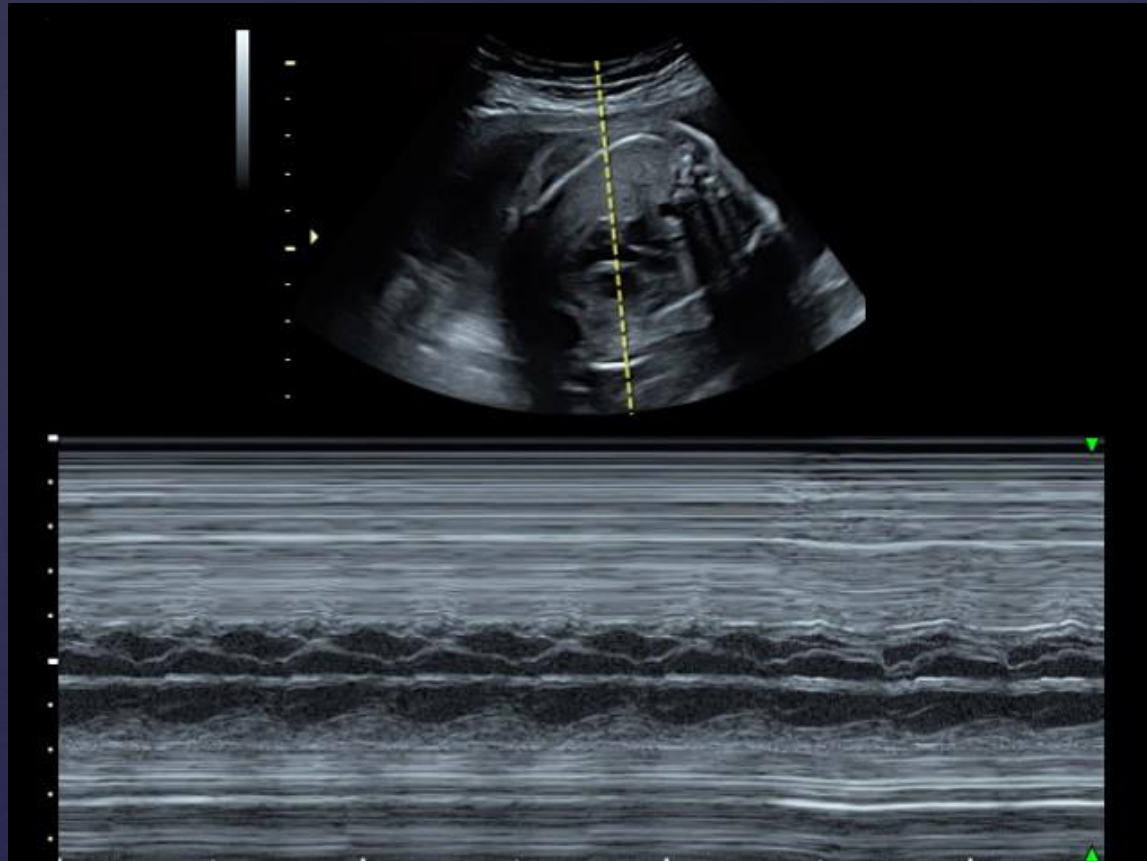
Situs: Cephalic Presentation



AO = aorta
LA = left atrium
LV = left ventricle
MV = mitral valve

RA = right atrium
RV = right ventricle
SP = spine
TV = tricuspid valve

Second Trimester M-Mode



Second Trimester Left Ventricular Outflow Tract (LVOT)



Second trimester
Right Ventricular Outflow Tract
(RVOT)



Second trimester
Right Ventricular Outflow Tract



RVOT = right ventricular outflow tract

Second trimester
Outflow Tracts: *Short Axis View*



Second Trimester 3 Vessel Views

Ductal Arch View

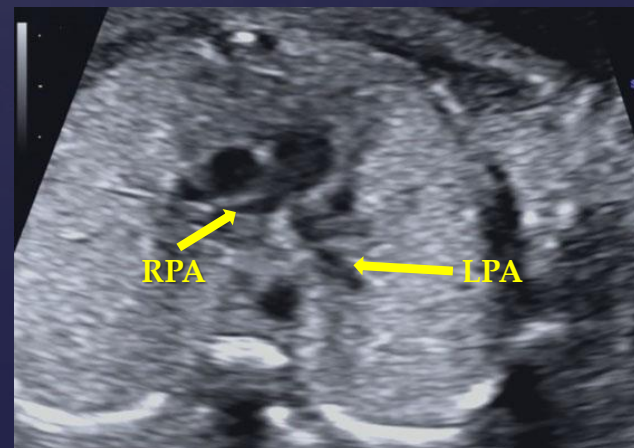


3 Vessel & Trachea View



AO = aorta
PA = pulmonary artery
SVC = superior vena cava
LPA = left pulmonary artery
RPA = right pulmonary artery

3 Vessel View



Second Trimester 3 Vessel & Trachea (3VT) View



PA = pulmonary artery

AO = aorta

SVC = superior vena cava

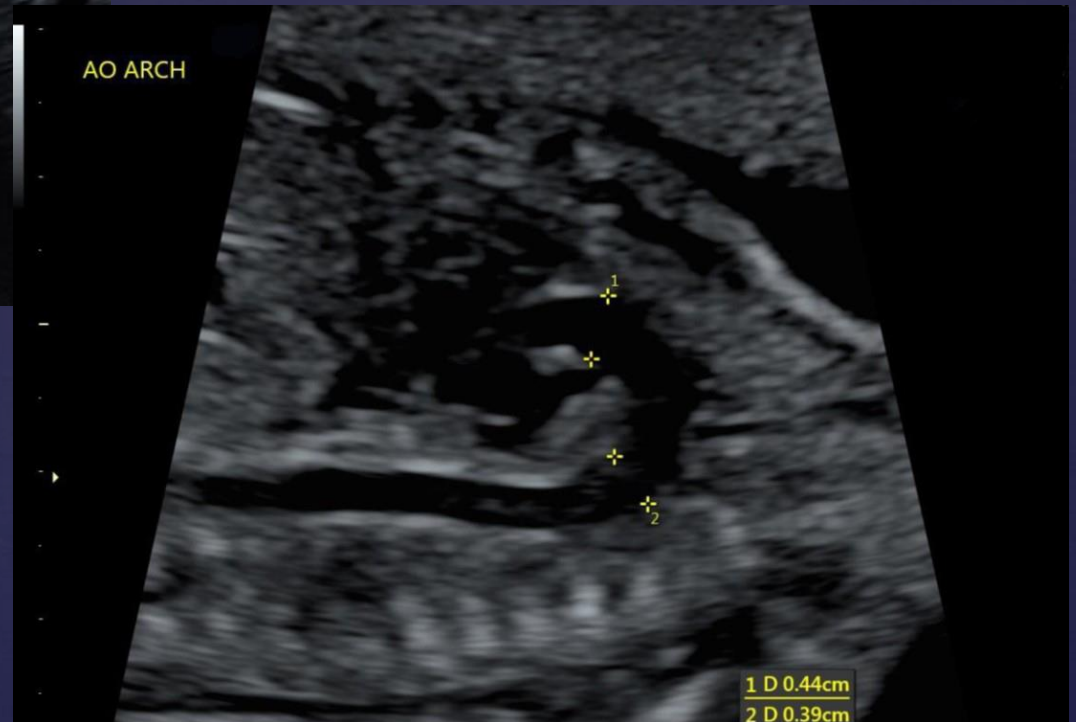
Third Trimester 3 Vessel & Trachea (3VT) View



Second Trimester
Pulmonary Veins (PV)



Second Trimester Aortic Arch



Second Trimester Ductal Arch

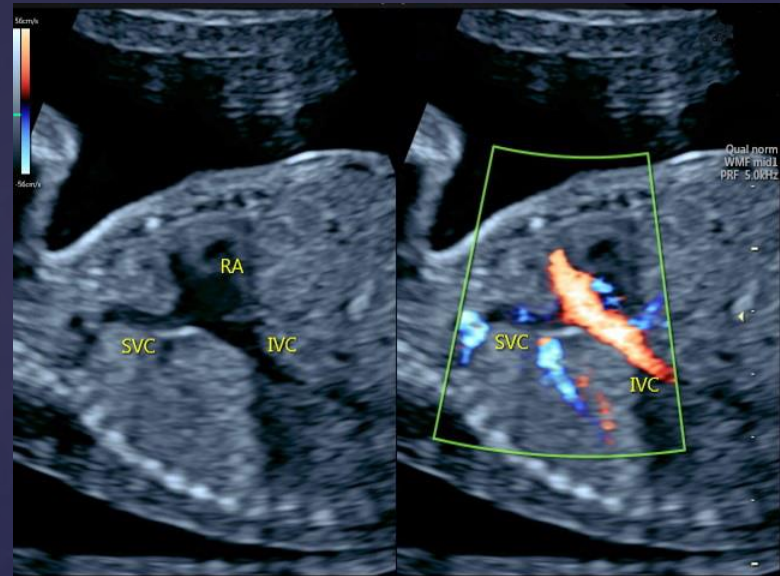


Second Trimester Ventricles: *Short Axis View*

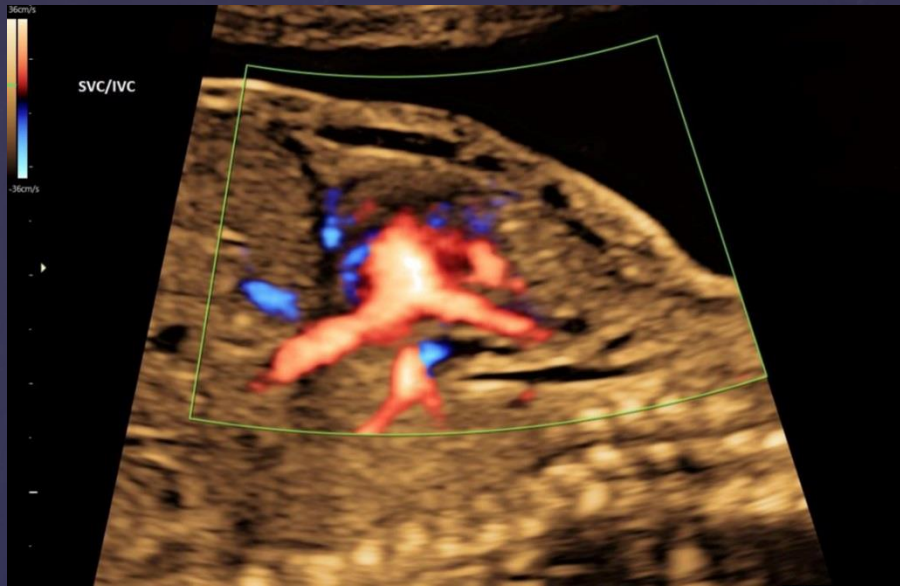


LV = left ventricle
RV = right ventricle

Second Trimester Superior & Inferior Vena Cava

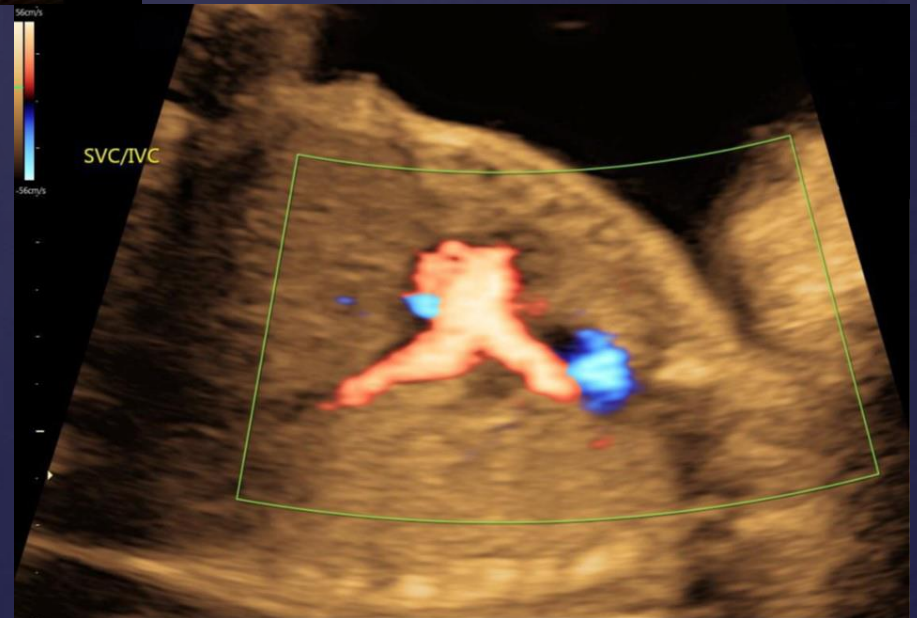


IVC = inferior vena cava
RA = right atrium
SVC = superior vena cava



Second Trimester *Color Doppler*

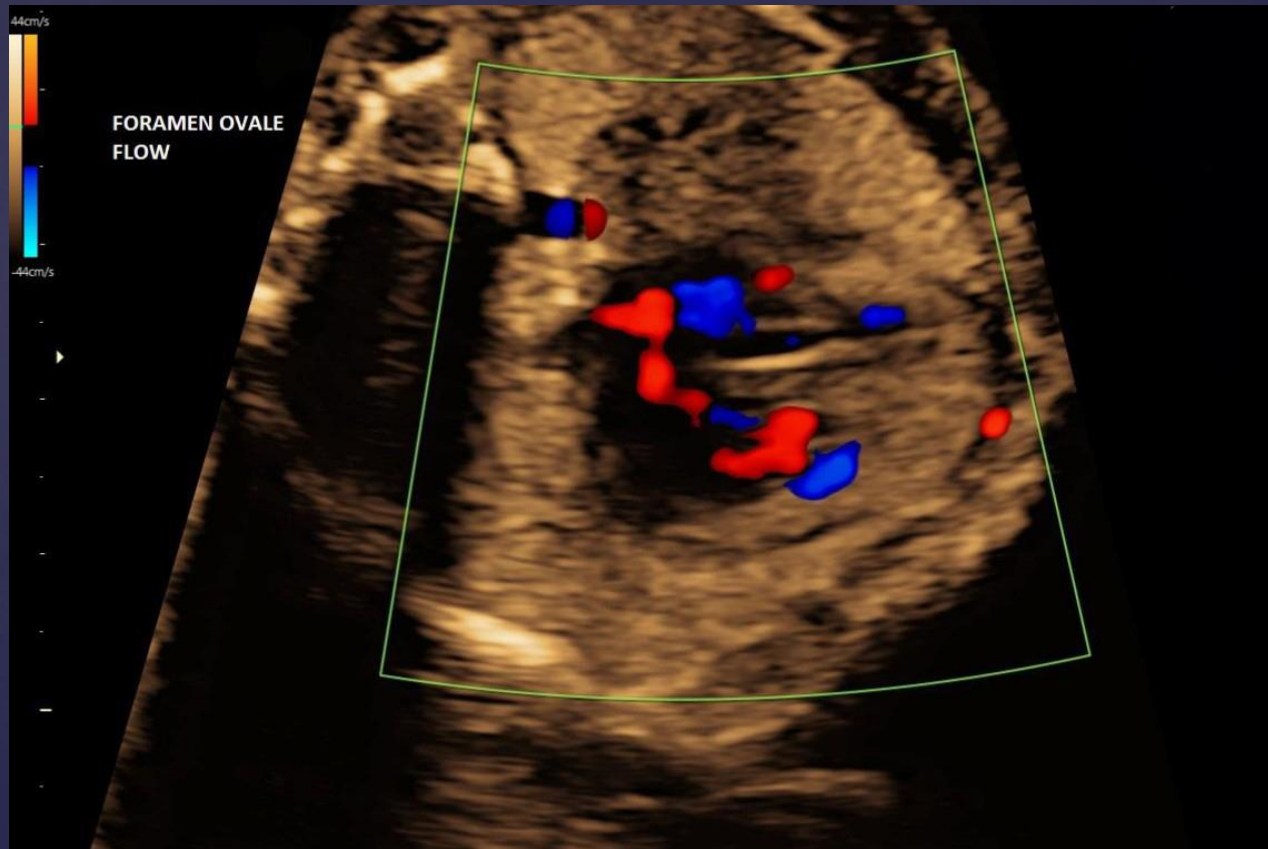
IVC = inferior vena cava
SVC = superior vena cava



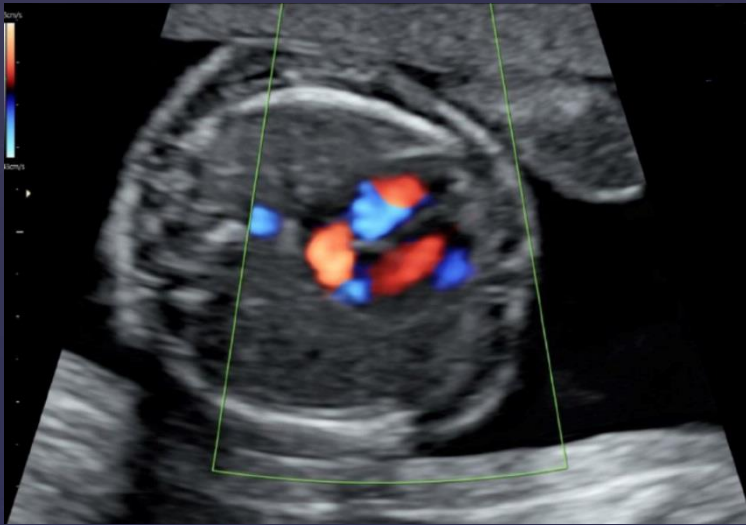
Third Trimester Pulmonary Veins



Second Trimester Foramen Ovale

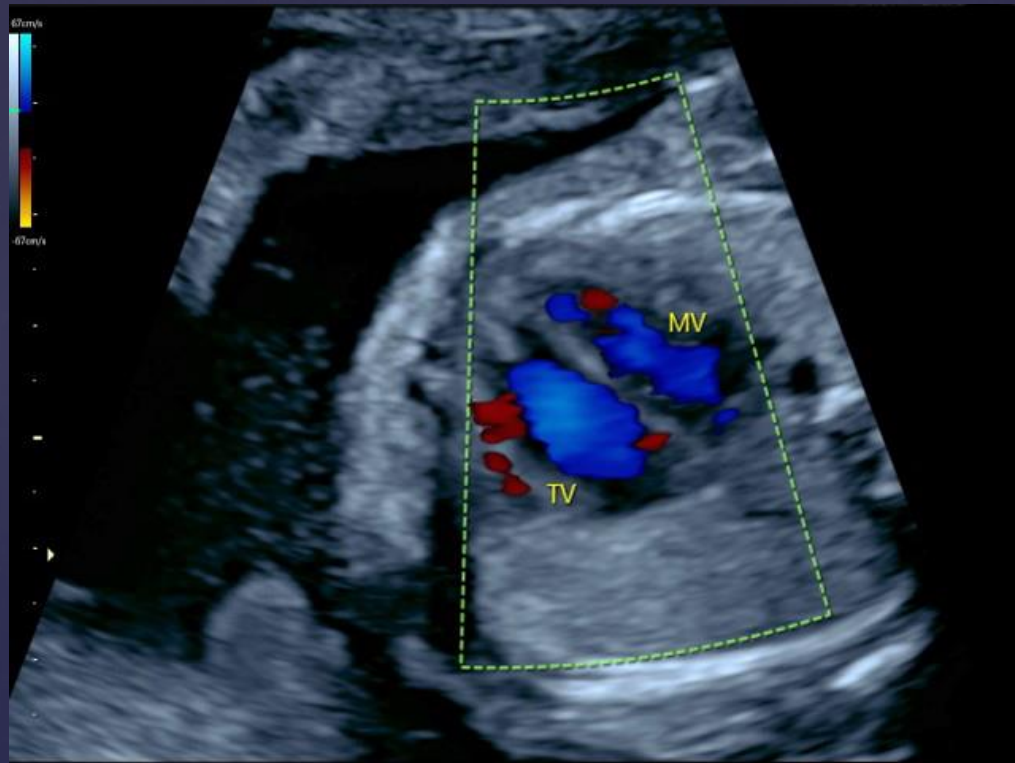


Second Trimester Foramen Ovale



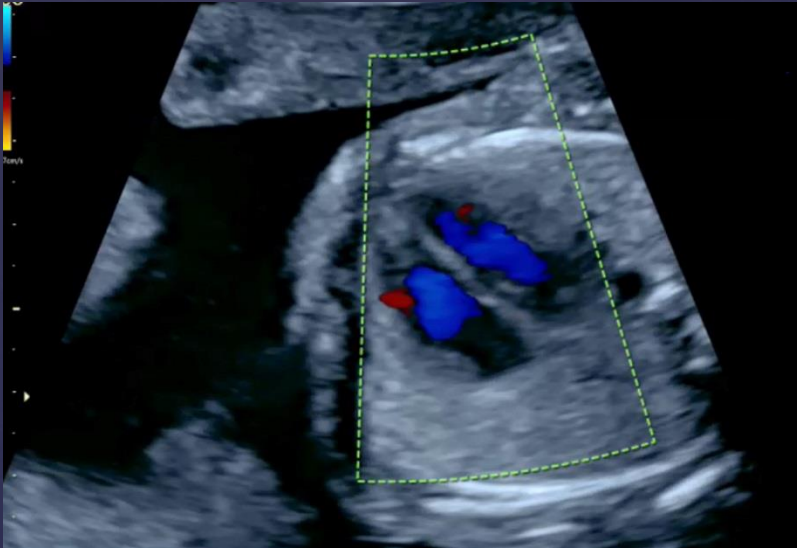
Second Trimester

Atrioventricular Valves: *Color Doppler*

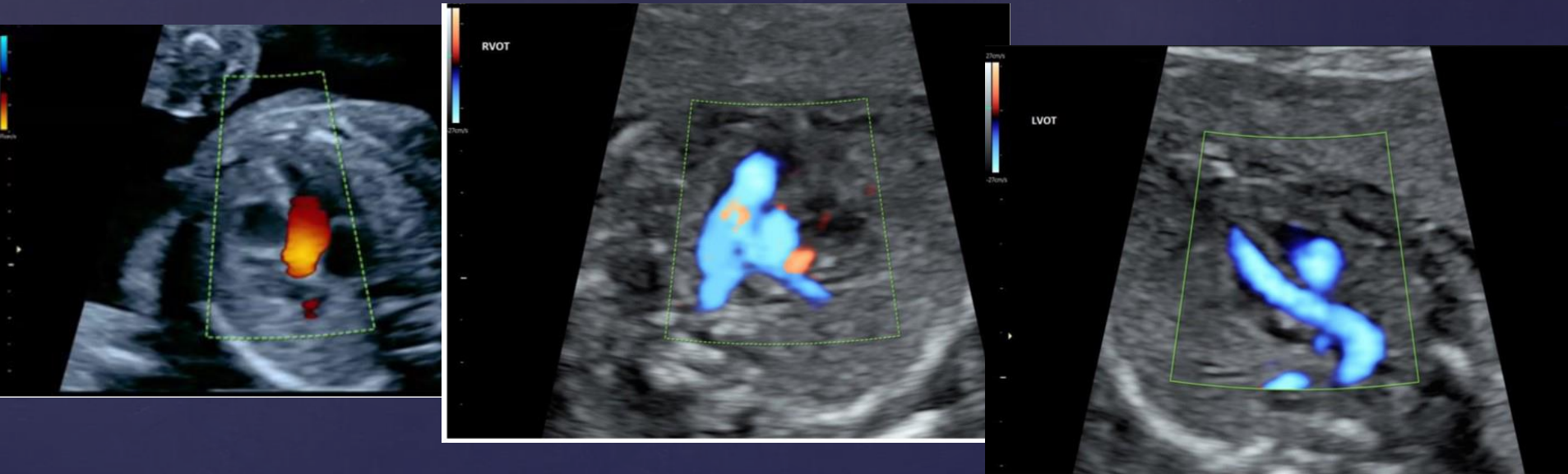


MV = mitral valve
TV = tricuspid valve

Second Trimester Interventricular Septum



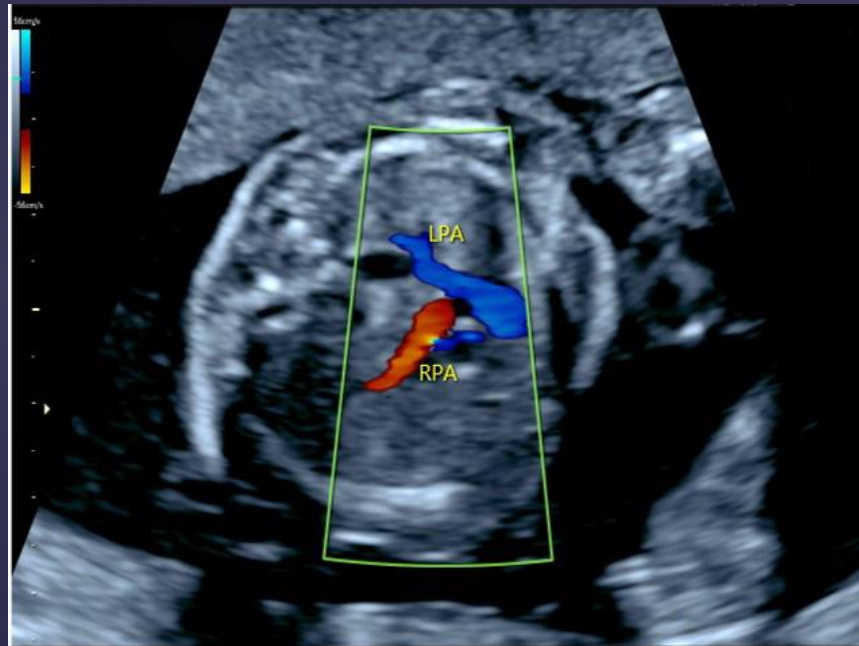
Second Trimester Semilunar Valves: *Color Doppler*



LVOT = left ventricular outflow tract
RVOT = right ventricular outflow tract

Second Trimester

Branching of the Pulmonary Arteries

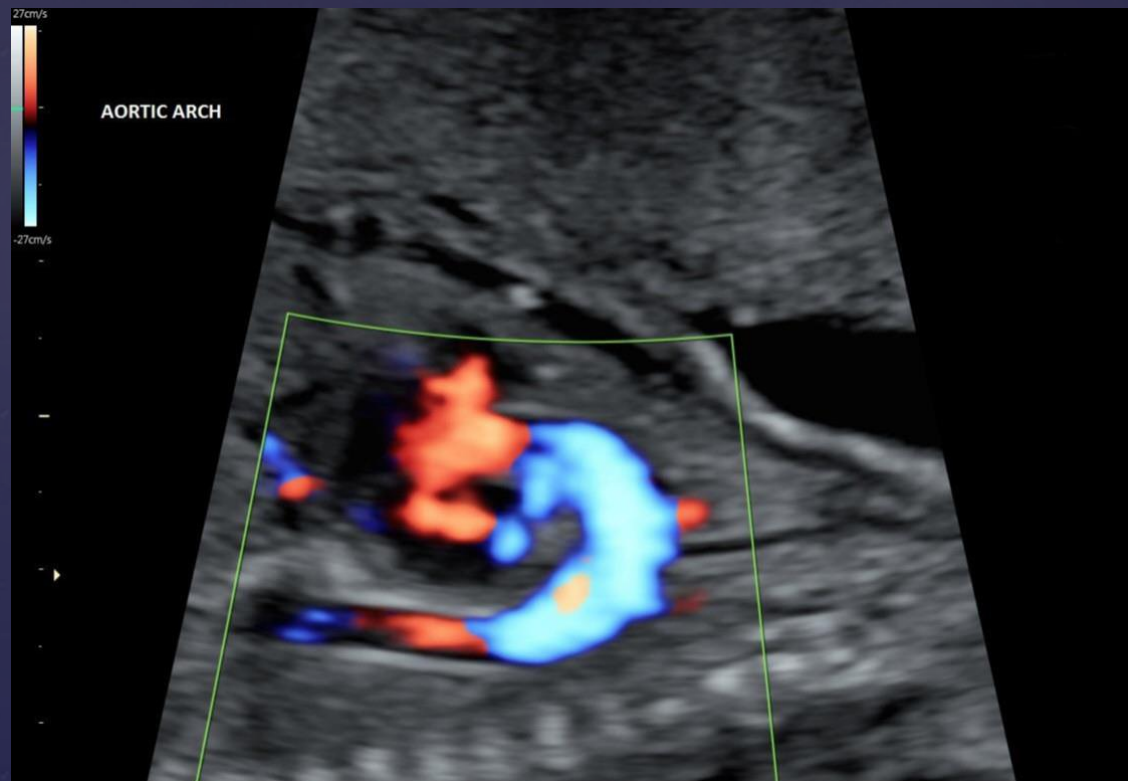


LPA = left pulmonary artery
RPA = right pulmonary artery

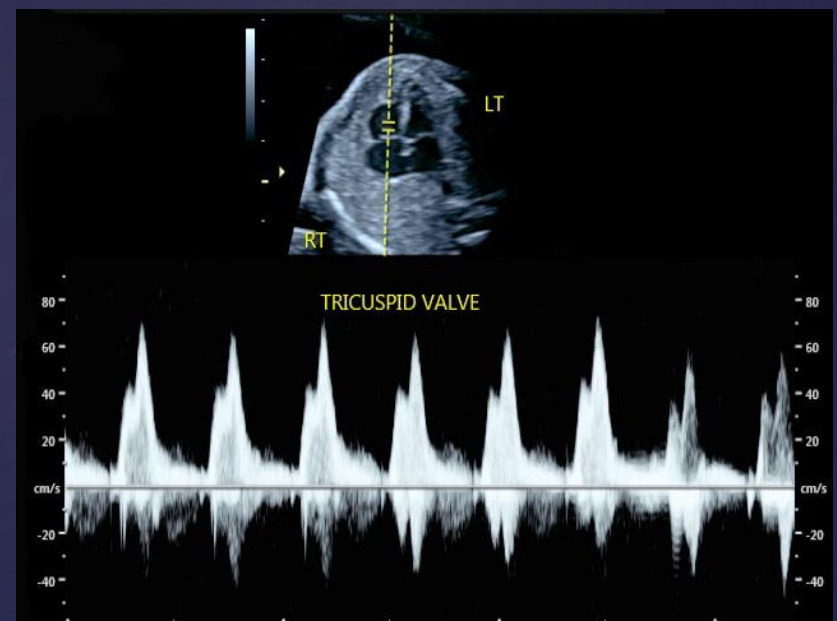
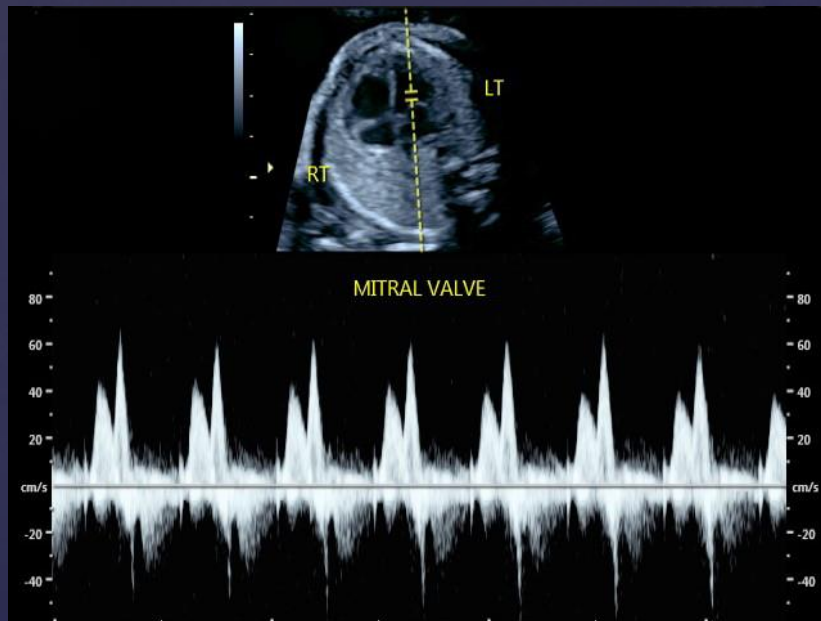
Second Trimester Ductal Arch



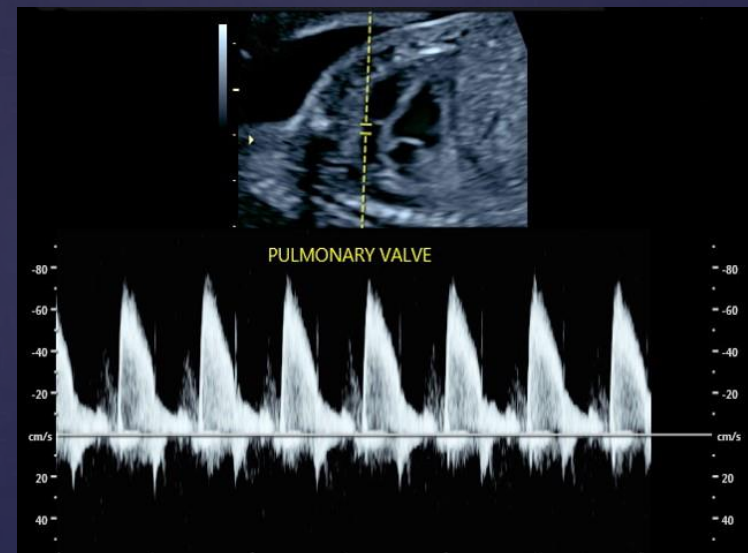
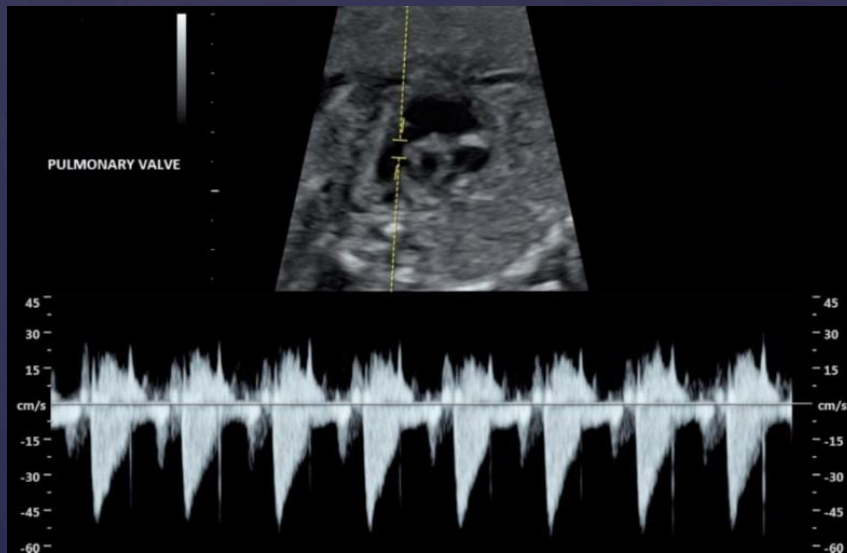
Second Trimester Aortic Arch



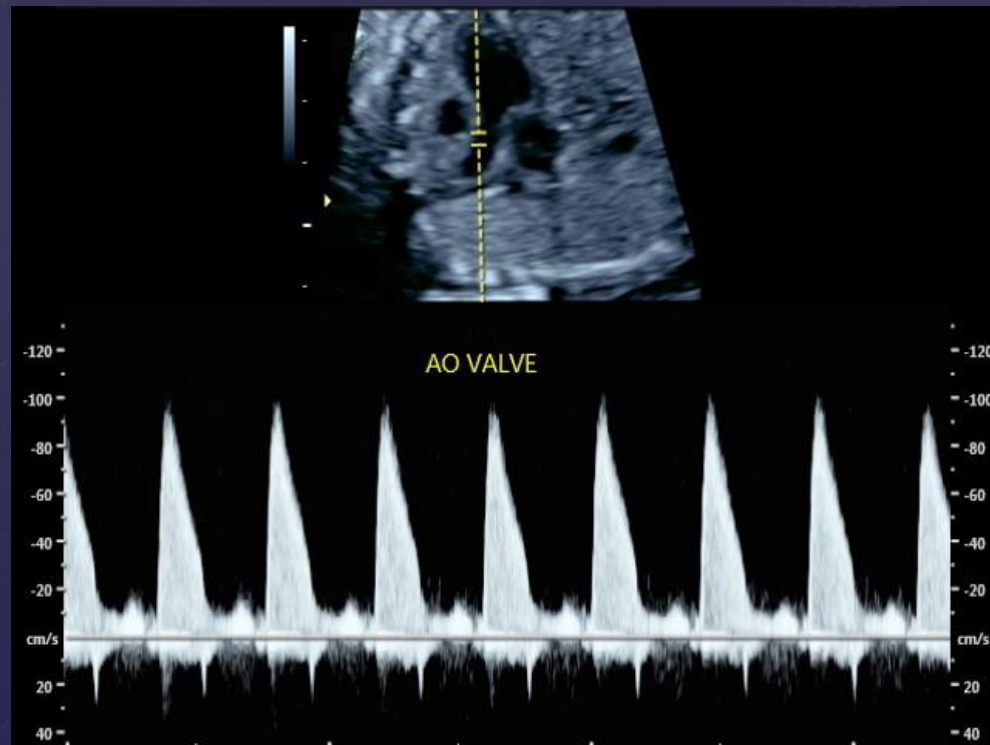
23week gestation
Atrioventricular valves: *Pulsed Doppler*



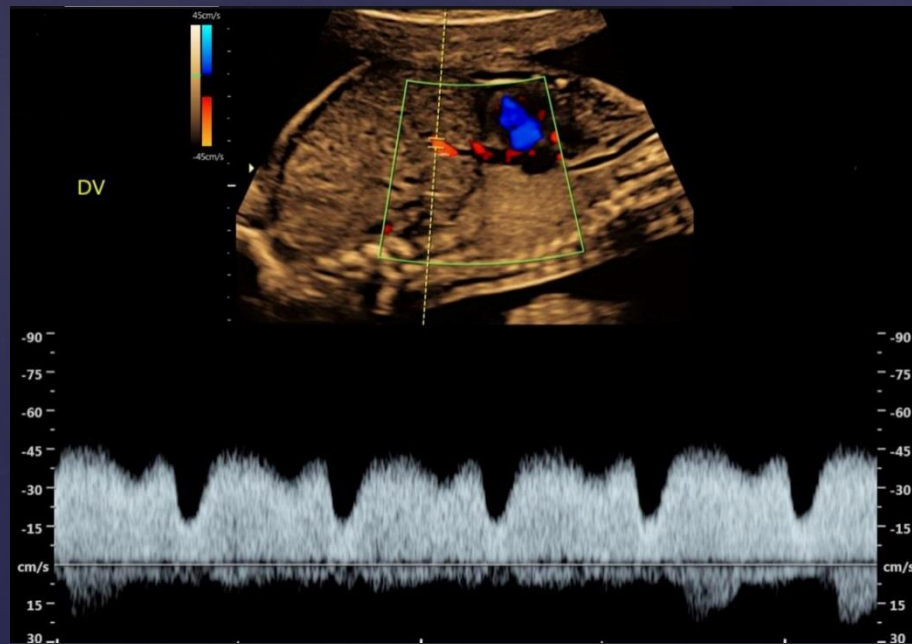
Second Trimester Pulmonary Valve: *Pulsed Doppler*



Second Trimester
Aortic Valve: *Pulsed Doppler*



Second Trimester Ductus Venosus: *Pulsed Doppler*



Second Trimester
Aortic Annulus
Measurement in Systole



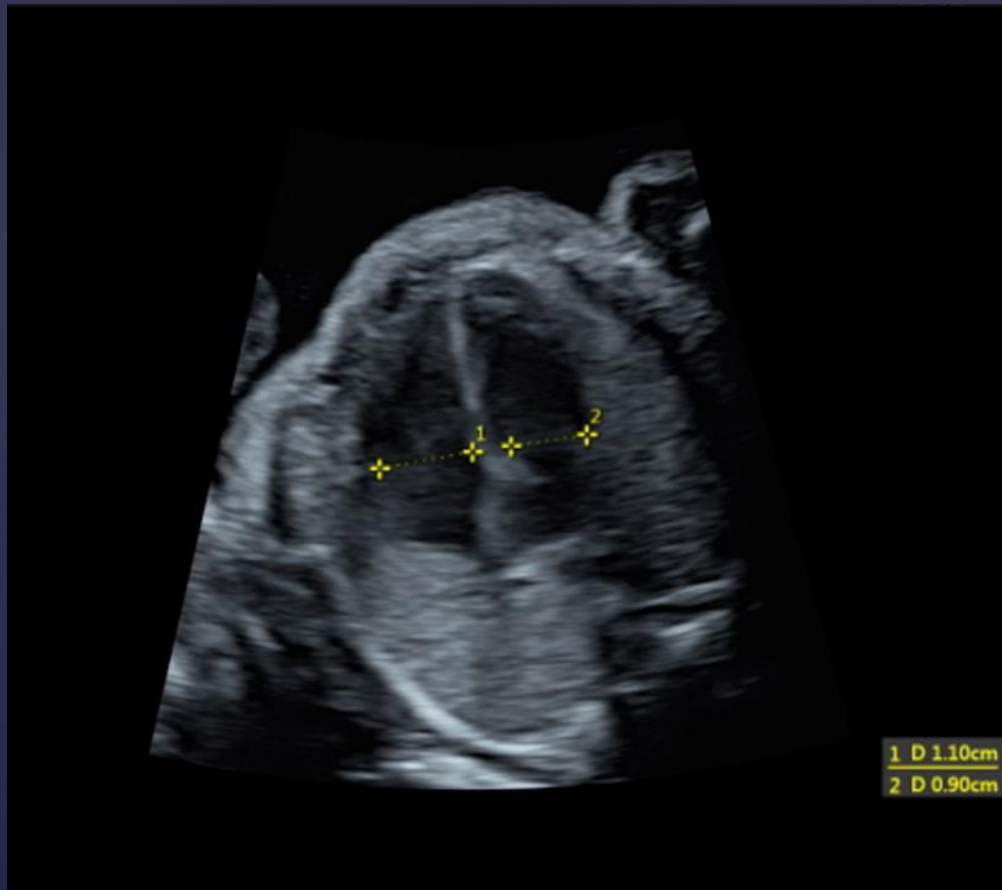
AO = aorta

Second Trimester
Pulmonary Artery
Measurement in Systole



PA = pulmonary artery

Second Trimester
Atrioventricular Valve Annulus:
Measurement in Diastole

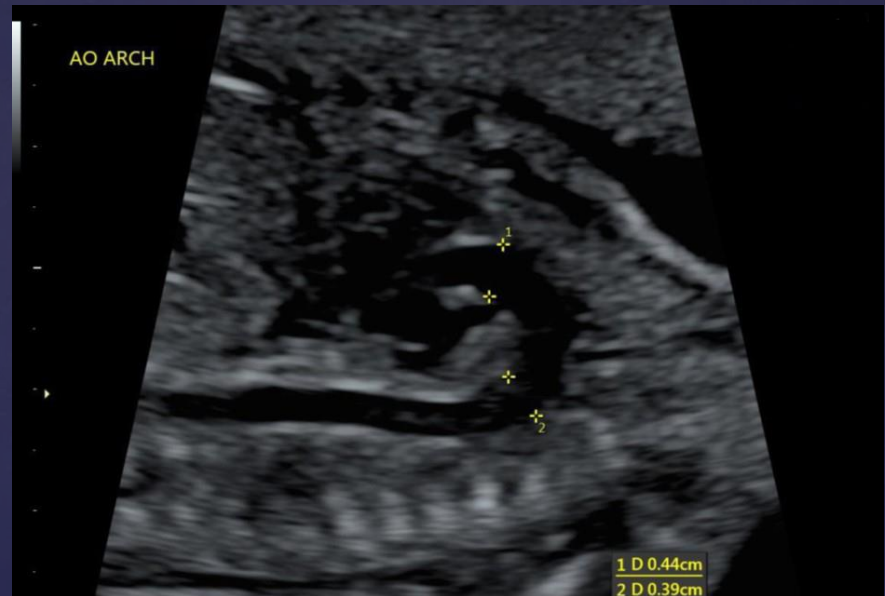


Second Trimester Ventricular Lengths

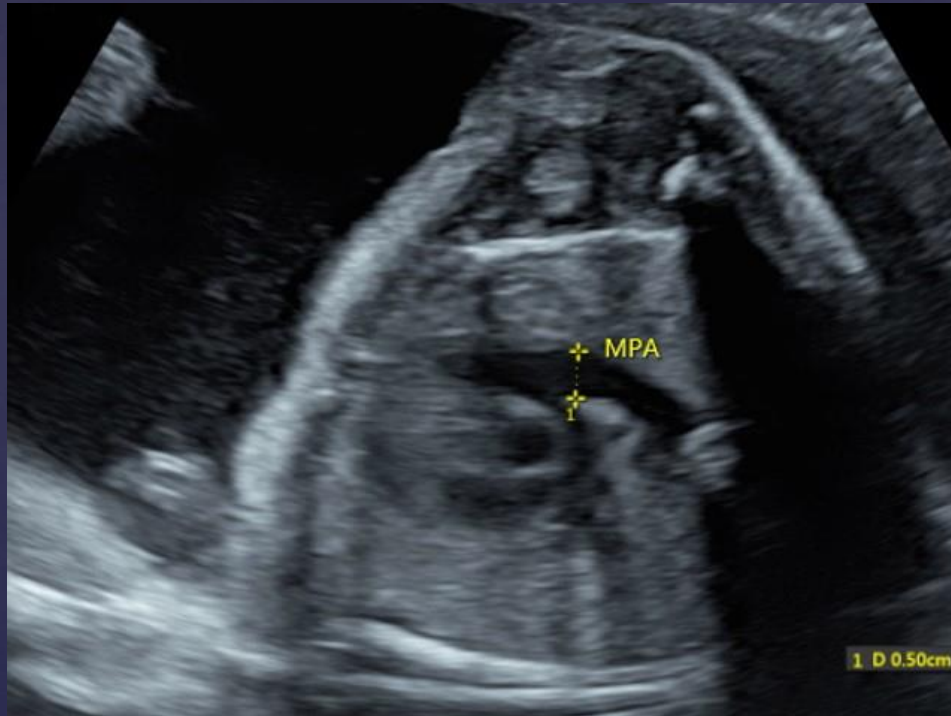


Second Trimester

Aortic Arch, Isthmus, Ductus Arteriosus *Diameter Measurements*



Second Trimester
Main Pulmonary Artery
Diameter Measurement



MPA = main pulmonary artery

Third Trimester Ventricular Diameters



Second Trimester

Ventricular Free Wall Thickness

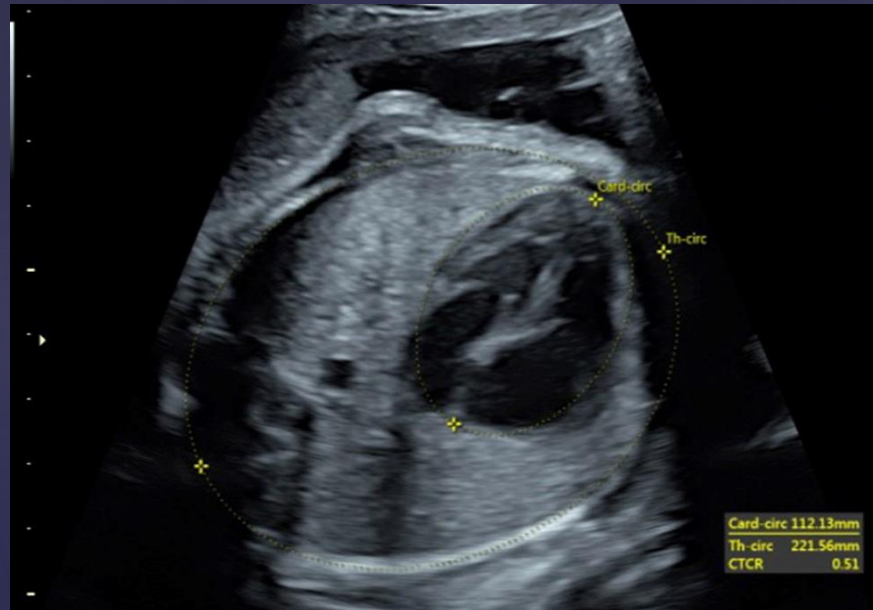


Second Trimester Interventricular Septum Thickness



IVS = interventricular septum

Third Trimester Cardiothoracic Ratio

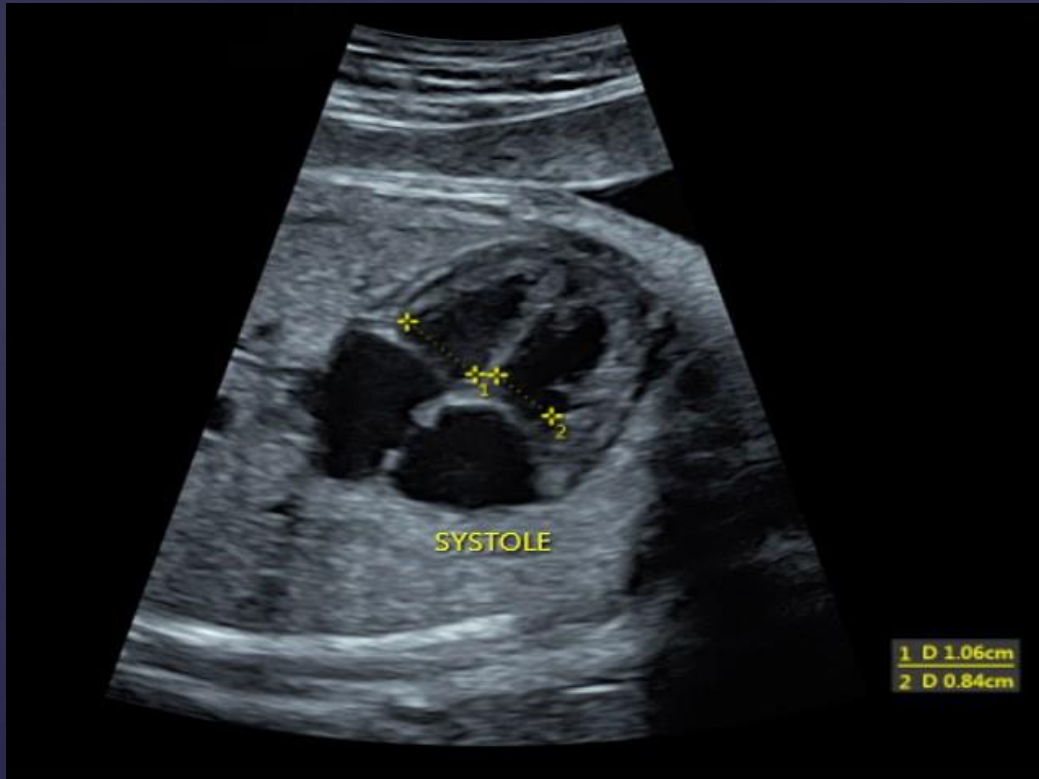


Card-circ = cardiac circumference

Th-circ = thoracic circumference

Third Trimester

Systolic Dimensions of the Ventricles



Second Trimester Transverse Dimensions of the Atria



Third Trimester Foramen Ovale



FO = foramen ovale

Third Trimester

Location for Measurement of Branch Pulmonary Arteries

