



Case Study Submission Requirements: Gynecologic Ultrasound with Adjunct Competence in 3D

➤ Refer to the *Accreditation Application Manual* for [additional case study submission requirements](#).

Only case studies with an ultrasound indication, listed in the relevant practice parameters, will be accepted. (Non-indicated exams will not be accepted.)

Cases in which a patient has had a hysterectomy or oophorectomy are not acceptable for submission.

Click to Download GYN Case Study Templates for PowerPoint

Applying for GYN with 3D

(may be used to fulfill standard GYN case study requirement)

- **From the main site:** submit 4 complete standard TRANSVAGINAL gynecologic cases with their corresponding final reports which include a demonstration and interpretation of the additional images referenced below*
- **From each additional site or mobile unit:** submit 1 complete standard TRANSVAGINAL gynecologic case with its corresponding final report which includes a demonstration and interpretation of the additional images referenced below*

* [3D Image Requirements & Acquisition/Submission Demonstration](#) (← click me)

- **Image 1:** Acquisition image demonstrating the uterus in three orthogonal planes.
- **Image 2:** Reconstructed CORONAL view of the uterus in a single image.

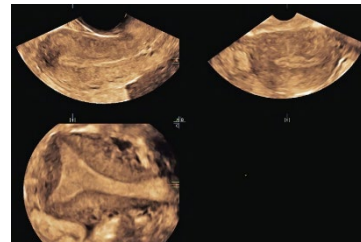
Gynecologic Ultrasound with Adjunct Competence in 3D Imaging Checklist

GYN with 3D

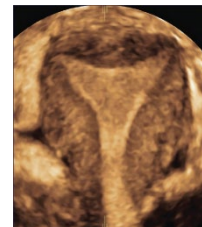
Labeled images of the following:

- 1. Uterus – sufficient images to show orientation and rule out masses and other abnormalities (at least 2 orthogonal planes)
- 2. Uterus measured in 3 dimensions
- 3. Endometrium
- 4. Measurement of endometrium
- 5. Cervix
- 6. Cul-de-sac
- 7. RIGHT ovary measured in 3 dimensions obtained in 2 orthogonal planes
- 8. LEFT ovary measured in 3 dimensions obtained in 2 orthogonal planes

- 9. Acquisition image demonstrating the uterus in 3 orthogonal planes*



- 10. Reconstructed CORONAL view of the uterus in a single image - this view should demonstrate the outer contour of the uterus and the inner endometrial shape*



Changes made to this document since previous version:

7/24/24	added requirement for proper exam indication
5/14/24	added link to Powerpoint case study templates