



# Case Study Submission Requirements: Gynecologic Ultrasound with Adjunct Competence in 3D

➤ Refer to the *Accreditation Application Manual* for [additional case study submission requirements](#).

---

*Cases in which a patient has had a hysterectomy or oophorectomy are not acceptable for submission.*

---

## Applying for GYN with Adjunct 3D *(may be used to fulfill standard GYN case study requirement)*

- From the **main site**: submit 4 complete standard TRANSVAGINAL gynecologic cases with their corresponding final reports which include a demonstration and interpretation of the additional images referenced below\*
  - From **each additional site or mobile unit**: submit 1 complete standard TRANSVAGINAL gynecologic case with its corresponding final report which includes a demonstration and interpretation of the additional images referenced below\*
- 

### \* [3D Image Requirements & Acquisition/Submission Demonstration](#) (← click me)

- **Image 1**: Acquisition image demonstrating the uterus in three orthogonal planes.
- **Image 2**: Reconstructed CORONAL view of the uterus in a single image.

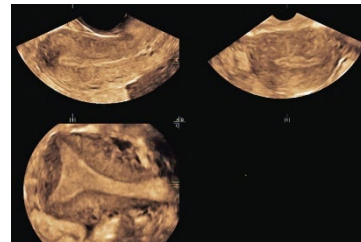
# Gynecologic Ultrasound with Adjunct Competence in 3D Imaging Checklist

## GYN with 3D

### Labeled images of the following:

- 1. Uterus – sufficient images to show orientation and rule out masses and other abnormalities (at least 2 orthogonal planes)
- 2. Uterus measured in 3 dimensions
- 3. Endometrium
- 4. Measurement of endometrium
- 5. Cervix
- 6. Cul-de-sac
- 7. RIGHT ovary measured in 3 dimensions obtained in 2 orthogonal planes
- 8. LEFT ovary measured in 3 dimensions obtained in 2 orthogonal planes

- 9. Acquisition image demonstrating the uterus in 3 orthogonal planes\*



- 10. Reconstructed CORONAL view of the uterus in a single image - this view should demonstrate the outer contour of the uterus and the inner endometrial shape\*

