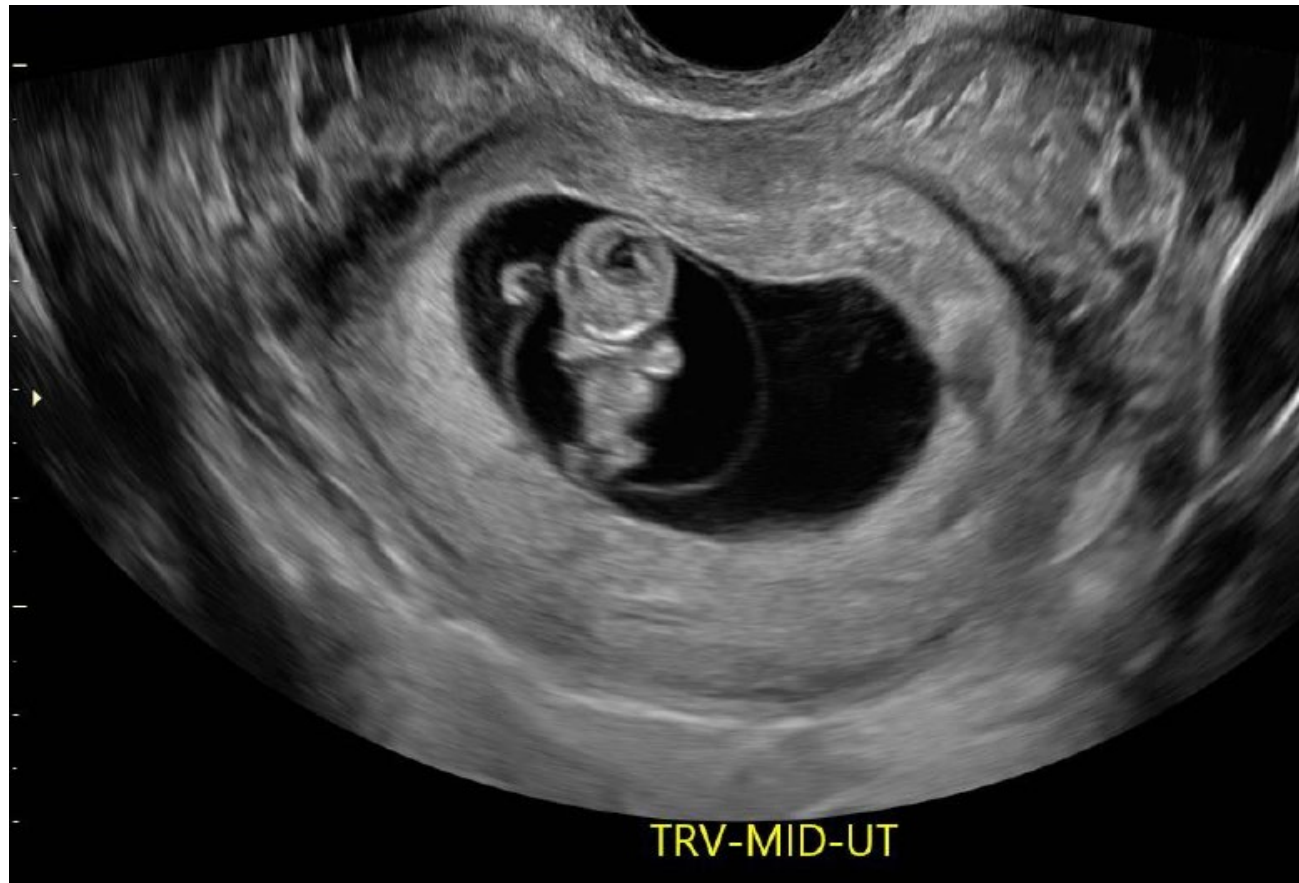


Obstetric Ultrasound

Detailed First Trimester

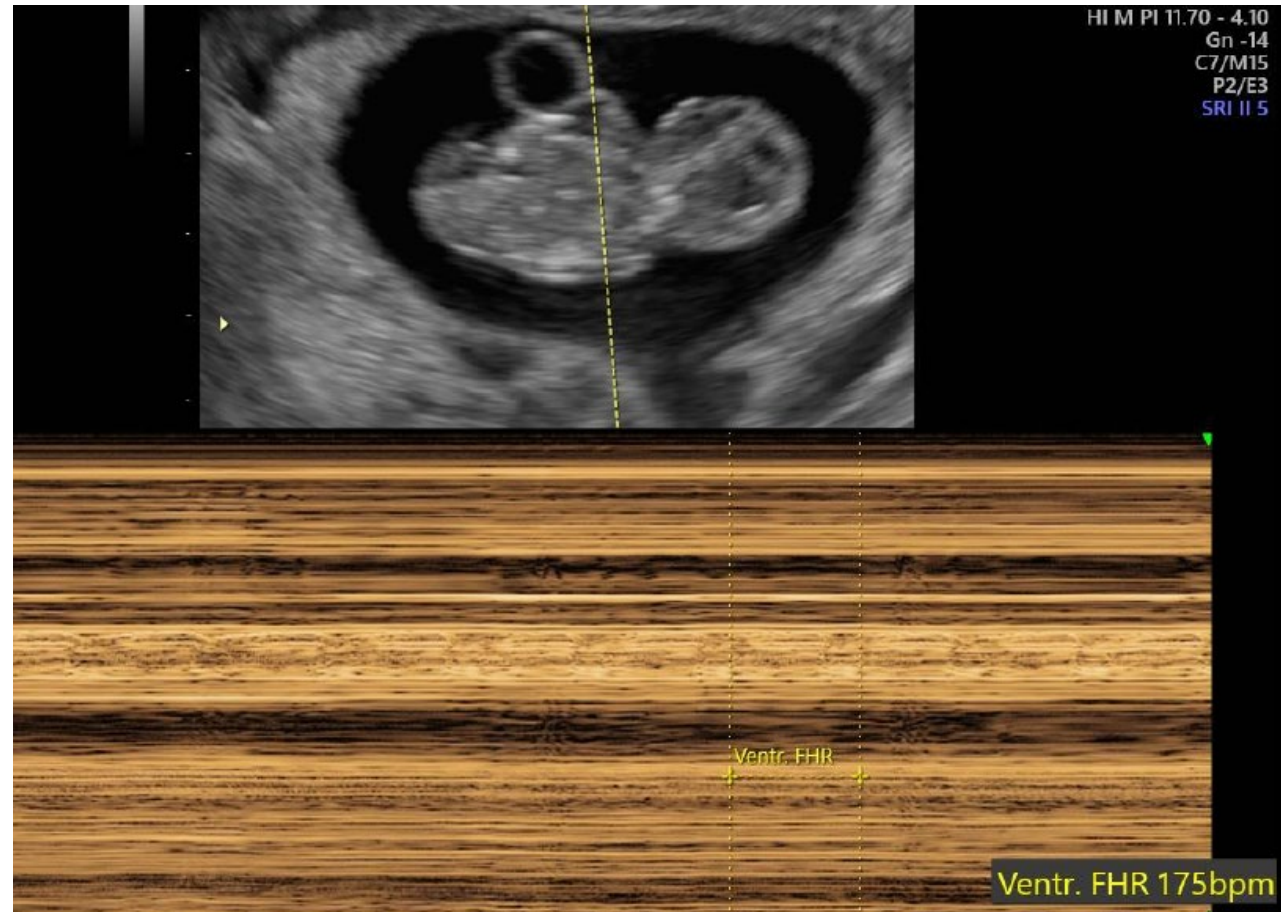
Presence and location of gestational sac



Presence or absence of embryo/fetus: singleton



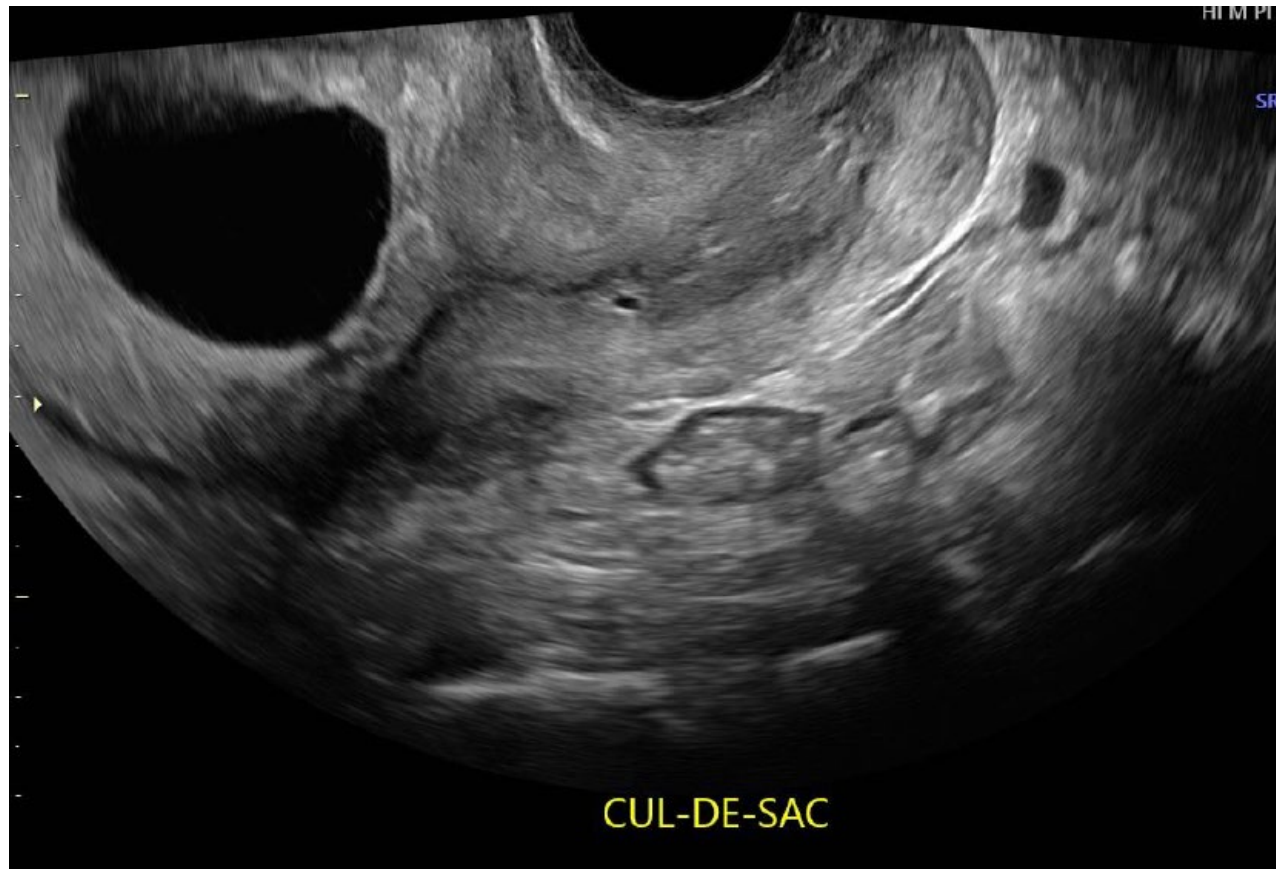
Presence or absence of cardiac activity (demonstrated by M-mode)



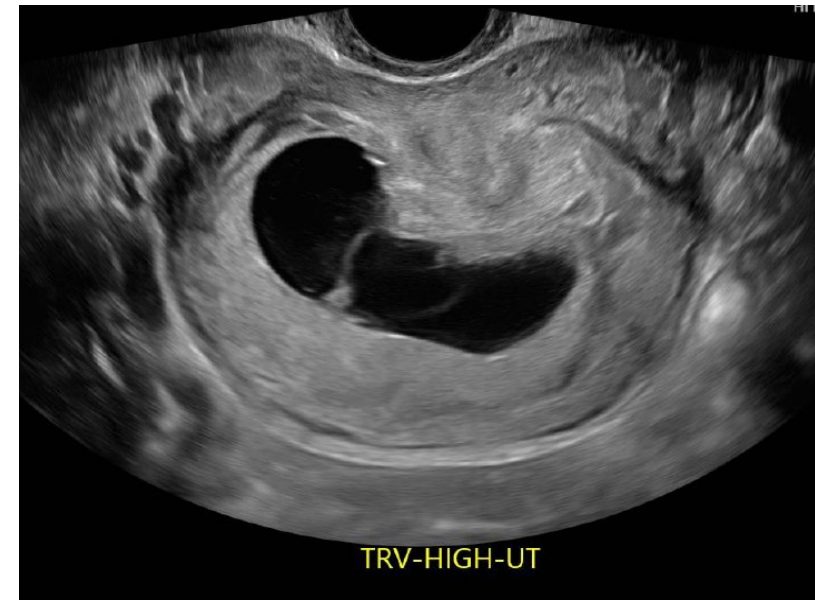
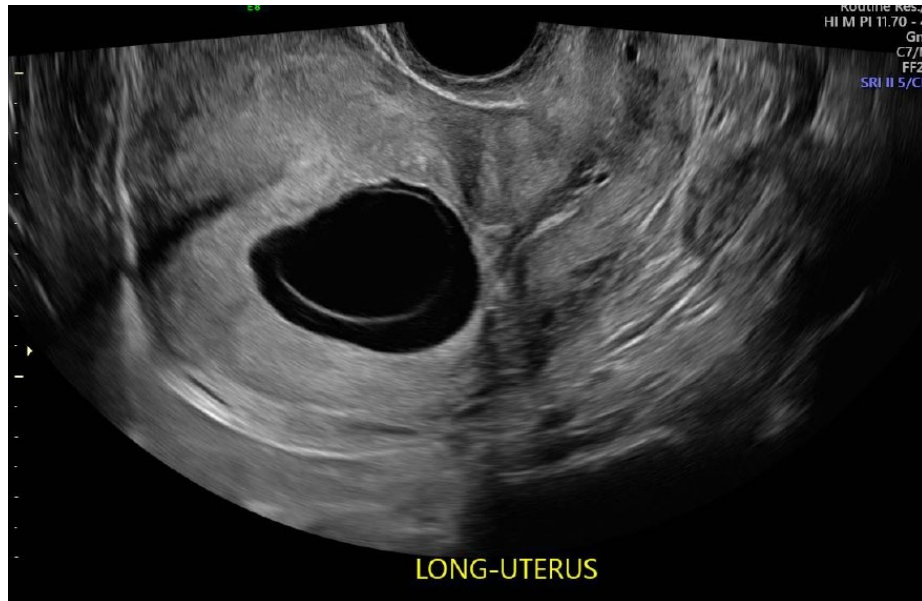
CRL



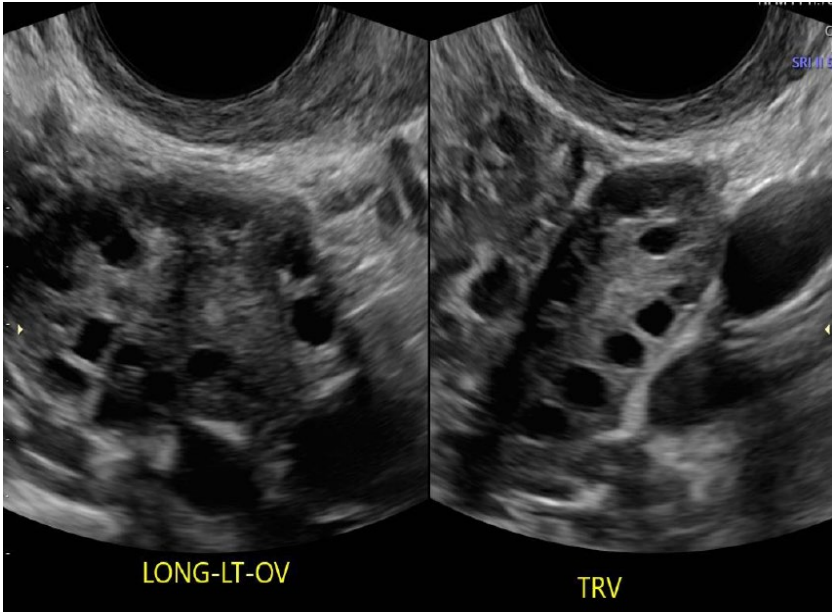
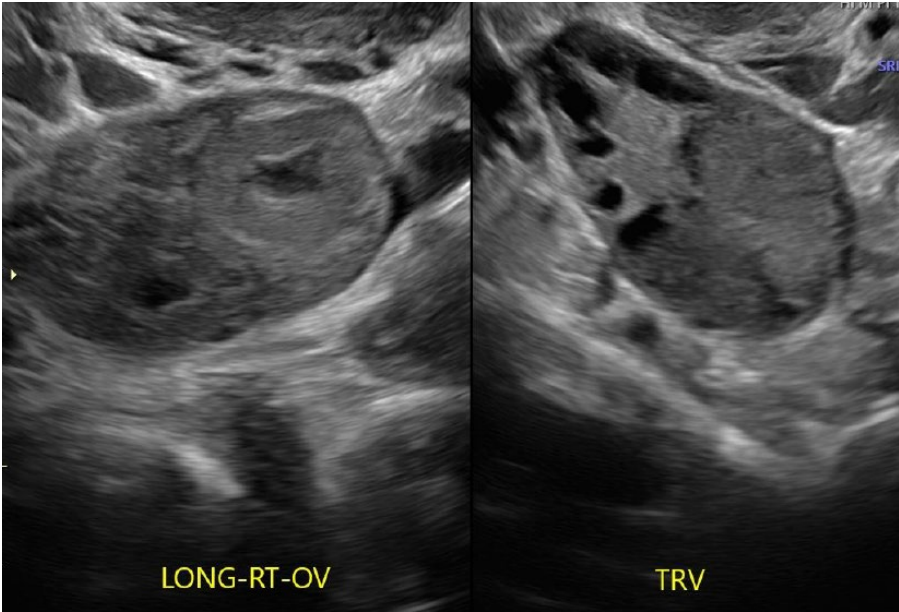
Cervix/Cul-de-sac



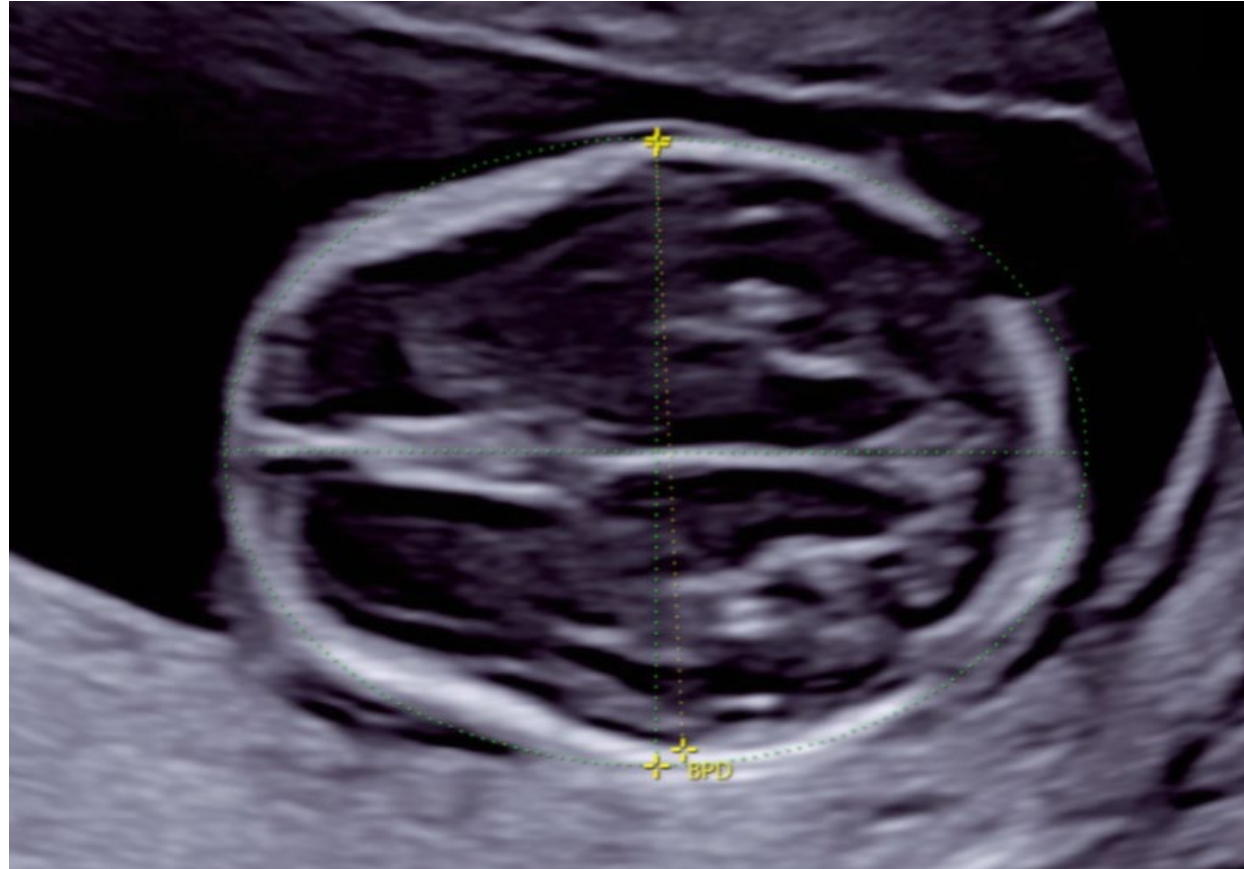
Uterus



Adnexa



BPD or HC measurement



Femur length



Abdominal circumference or diameter



Circumference



Diameter

Ventricles and cortex



Choroid Plexus



Falx cerebri



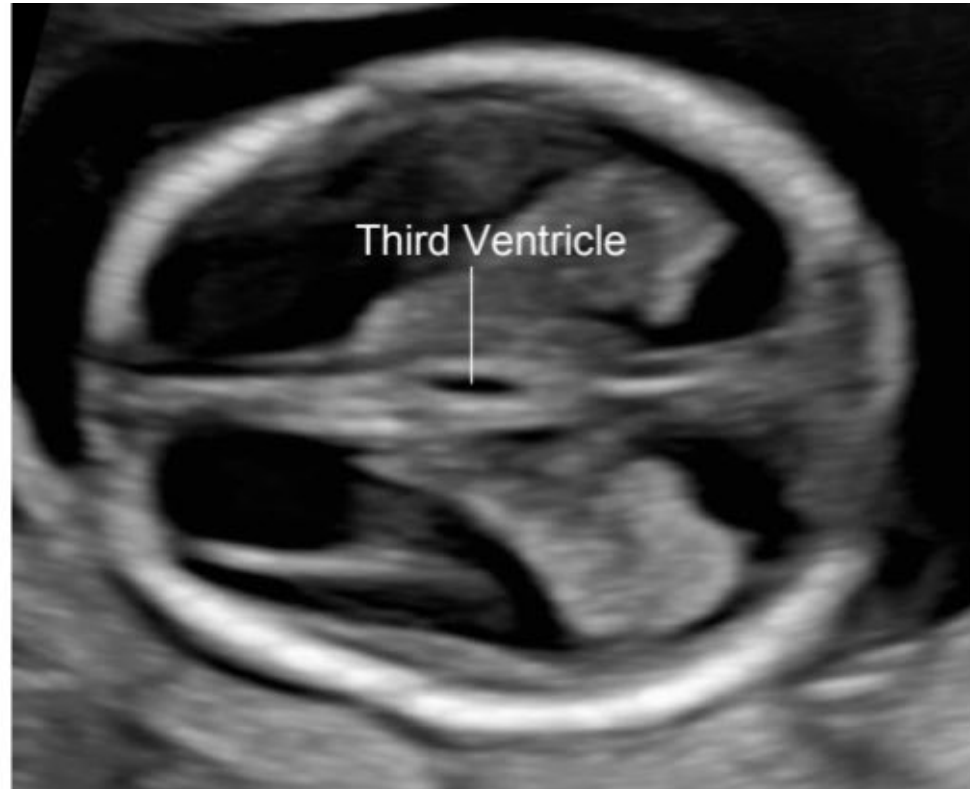
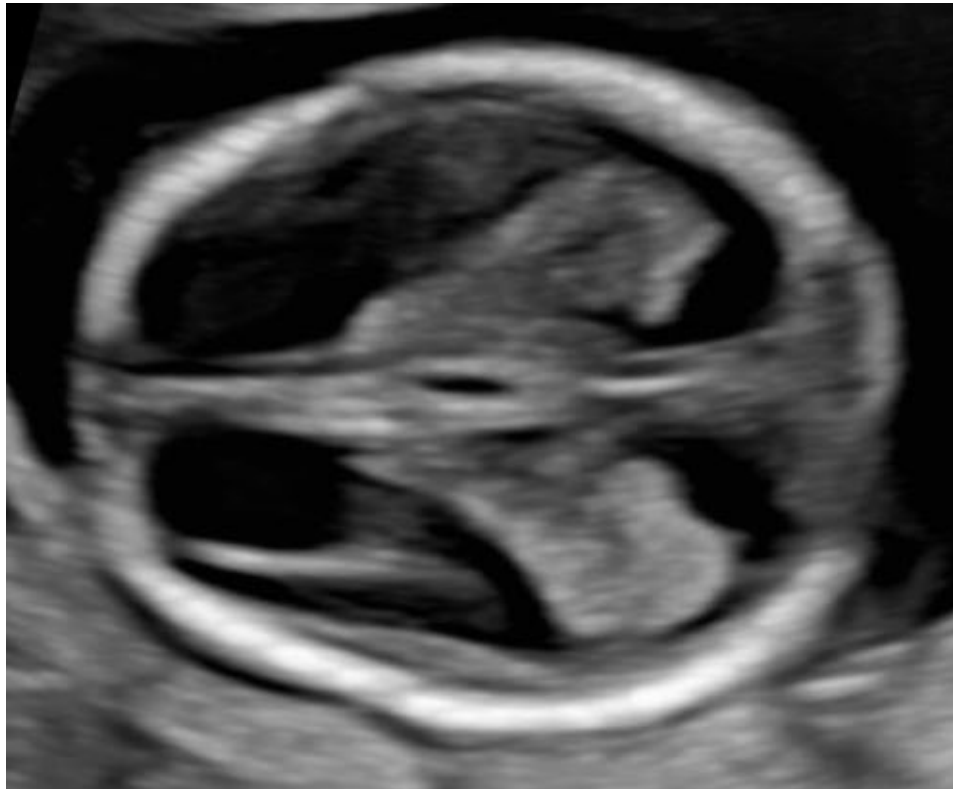
Posterior fossa



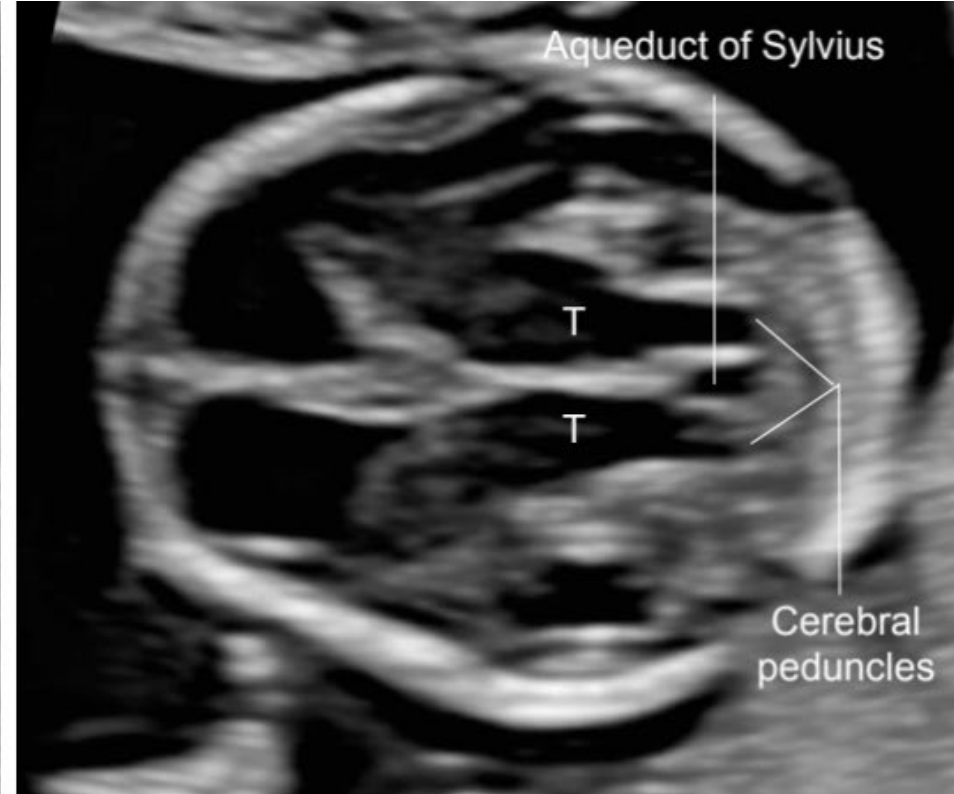
Transventricular cranial bones



Third ventricle



Transthalamic plane – thalami, cerebral peduncles, third ventricle and aqueduct of Sylvius



Sagittal: thalami-midbrain, brainstem, 4th ventricle (intracranial lucency), and cisterna magna



Axial or coronal orbits – size and position



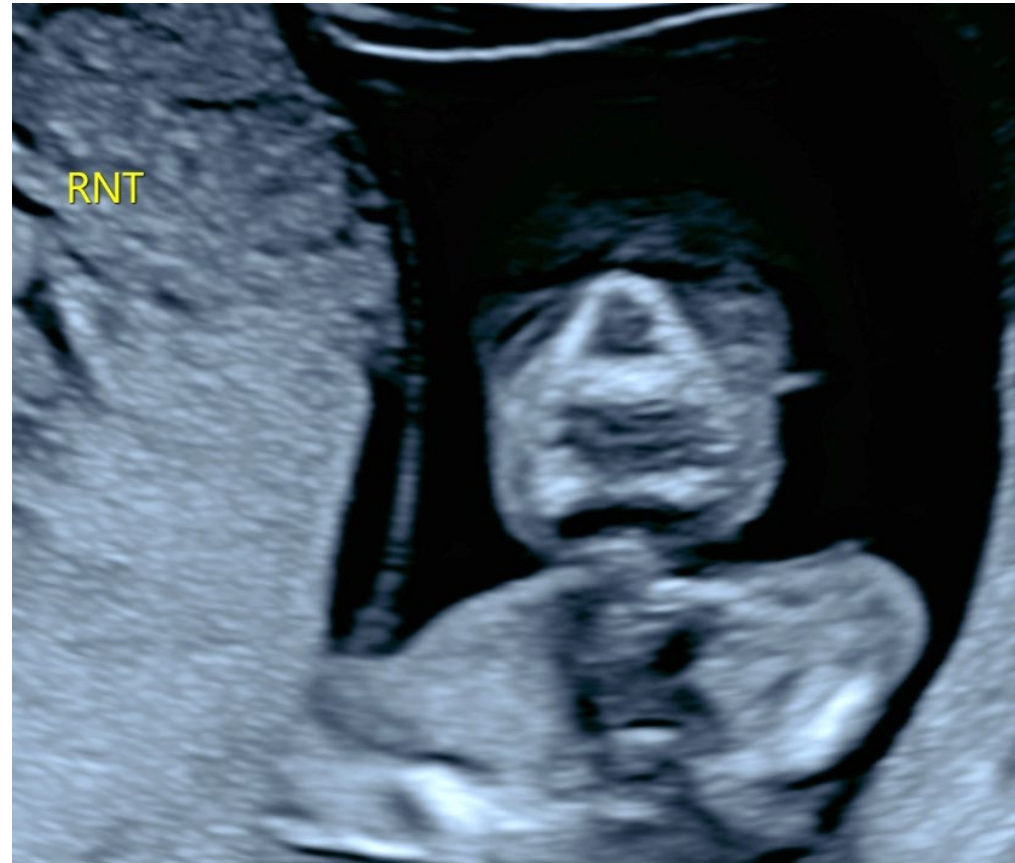
Profile (mid sagittal) including mandible



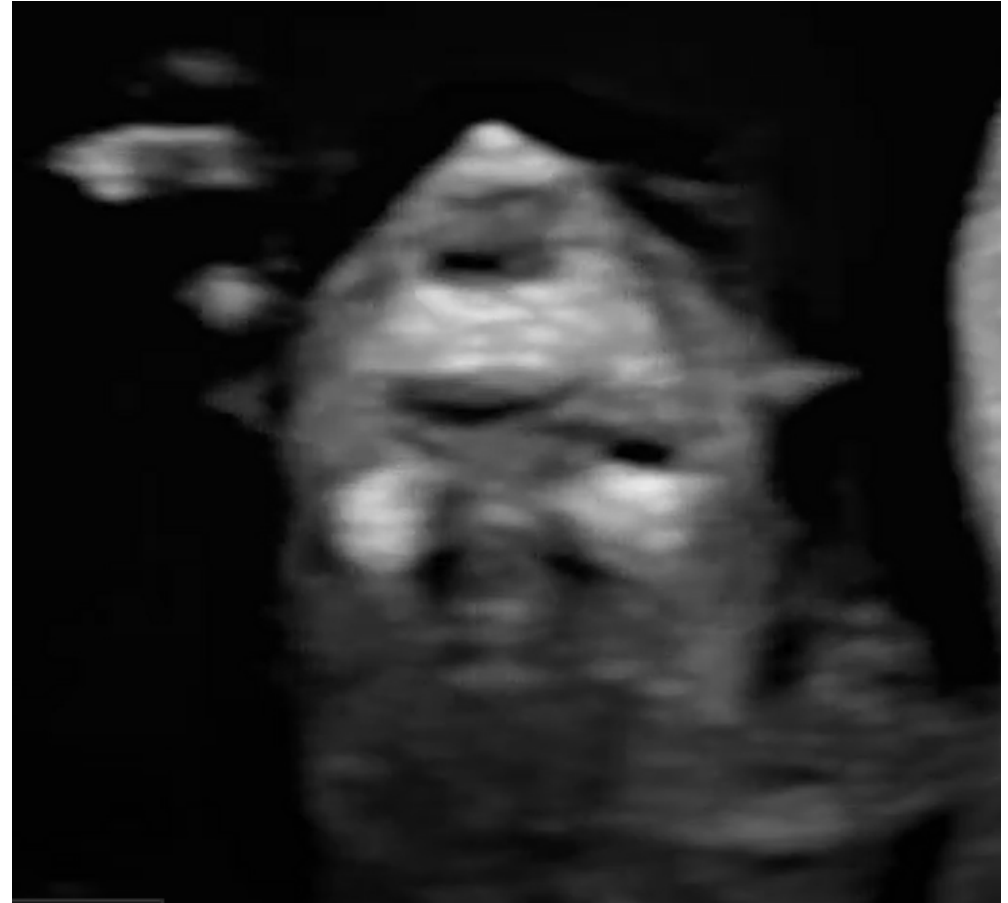
Sagittal maxilla



Retronasal triangle with ancillary bones



Coronal mandible



Coronal upper lip



Coronal lenses



Coronal ears



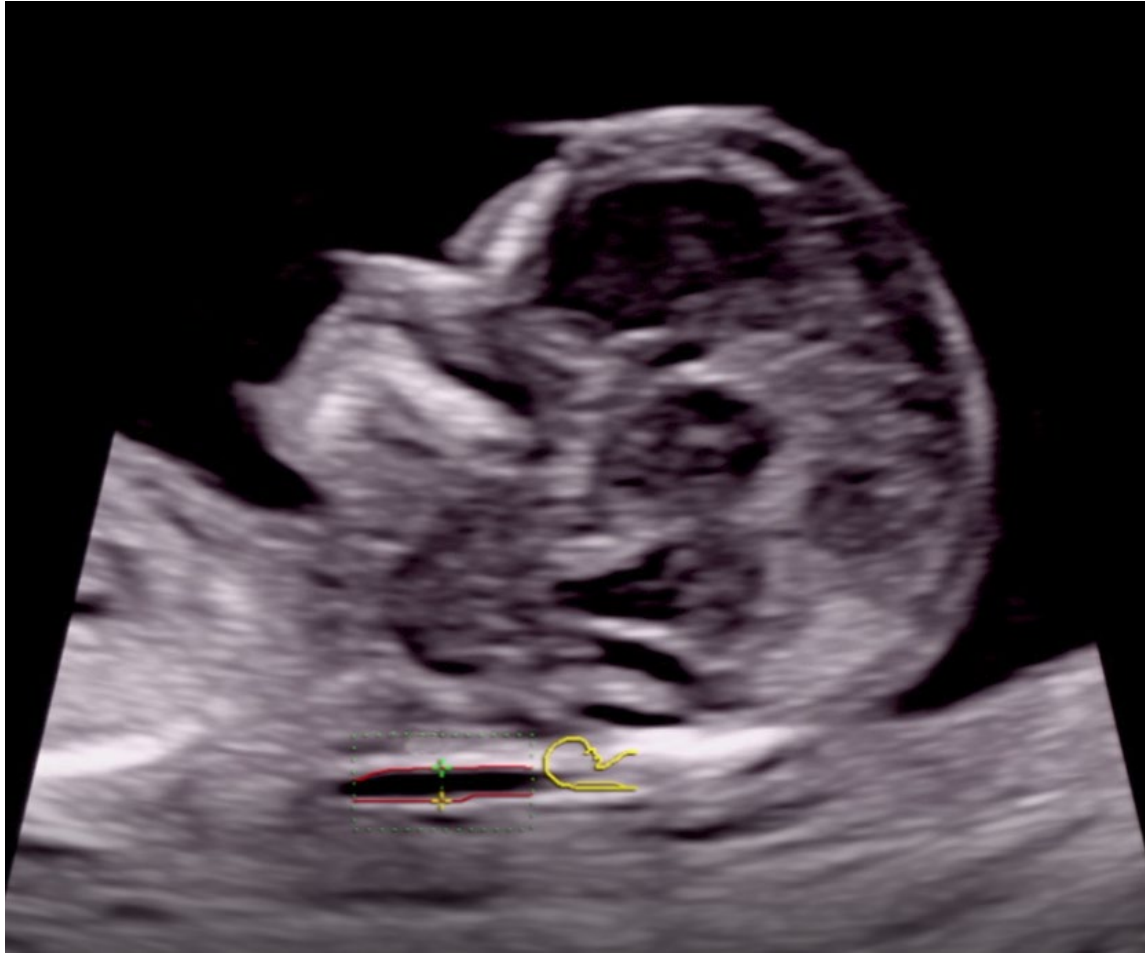
Sagittal neck



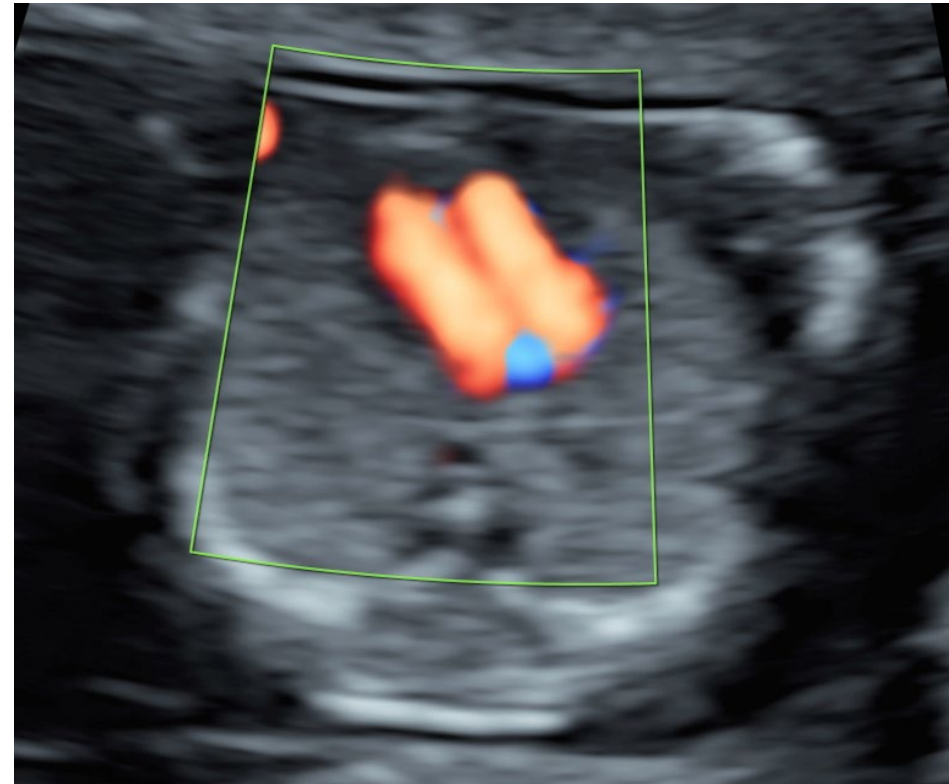
NT demonstrated in a sagittal plane



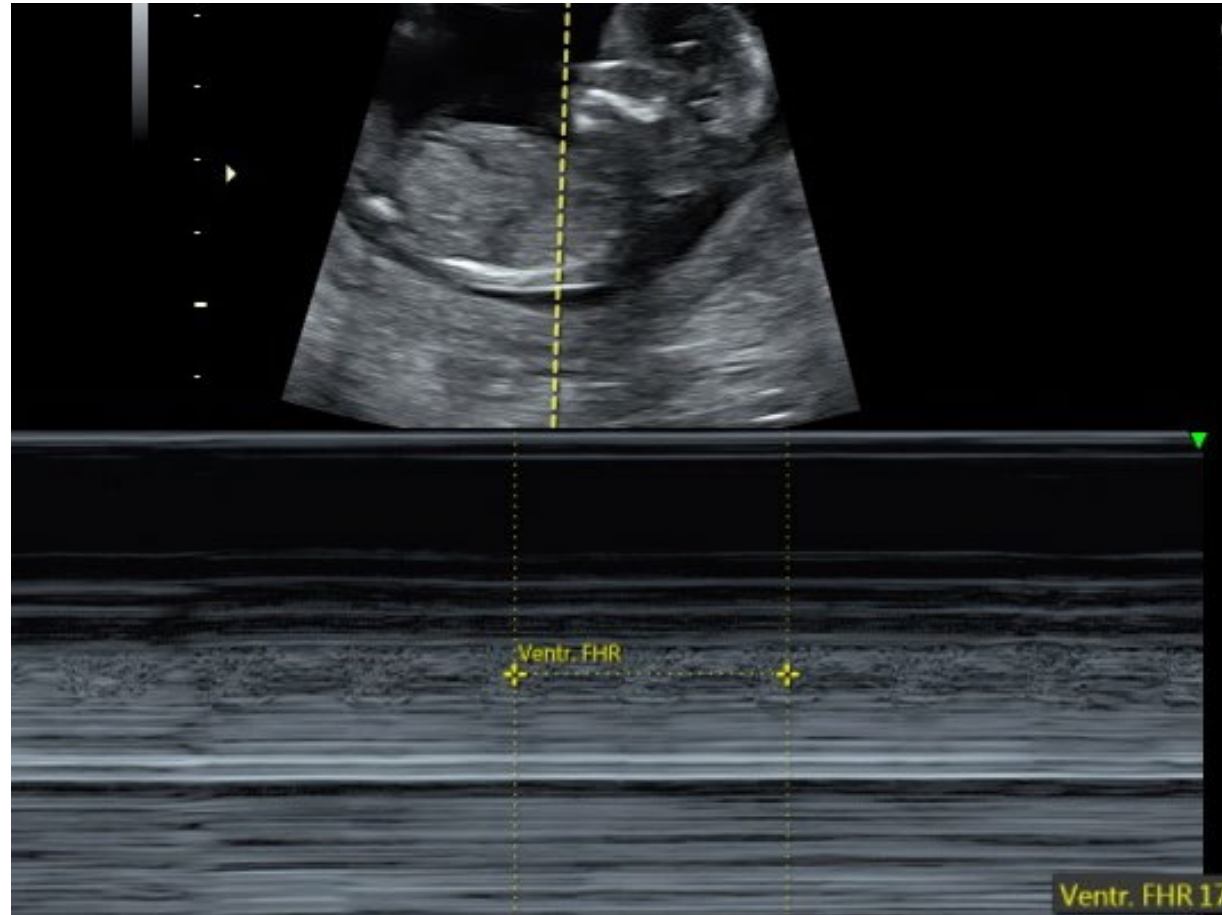
NT measurement performed correctly



Four chamber view of the heart – with and without color flow



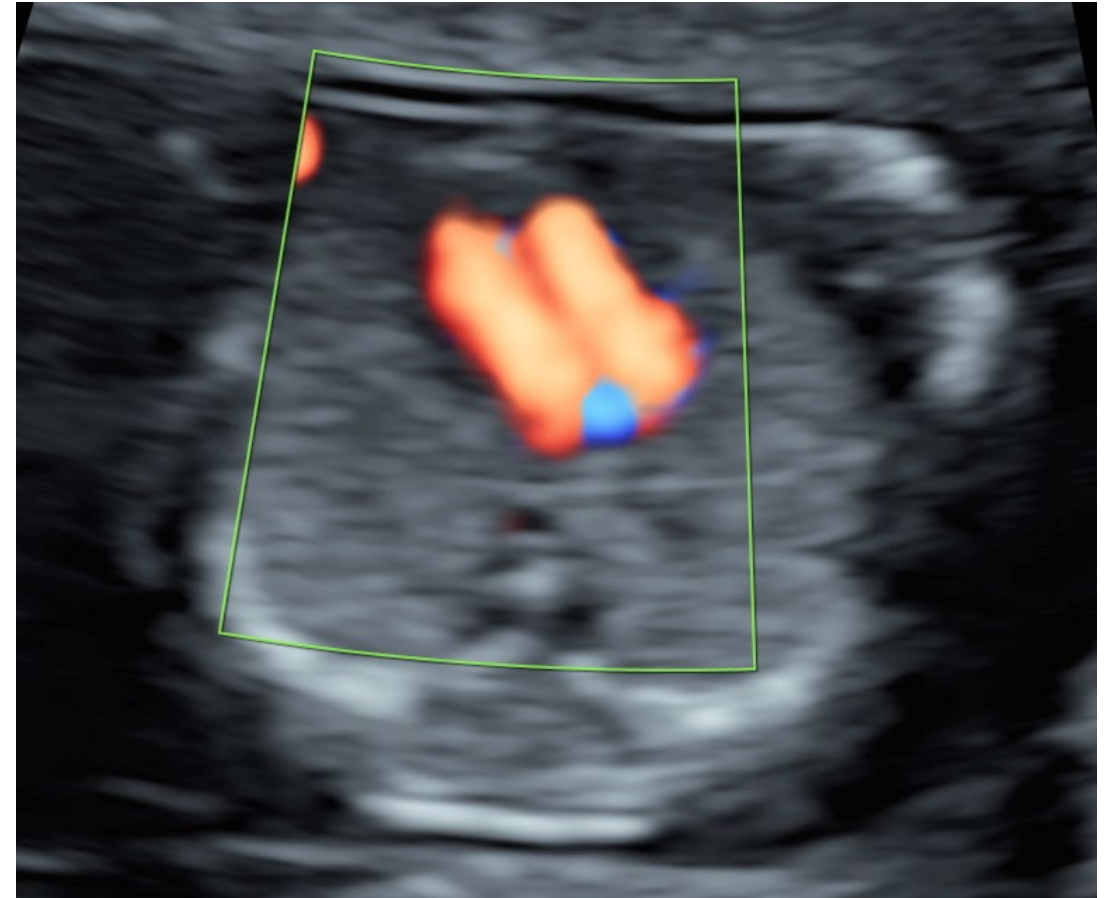
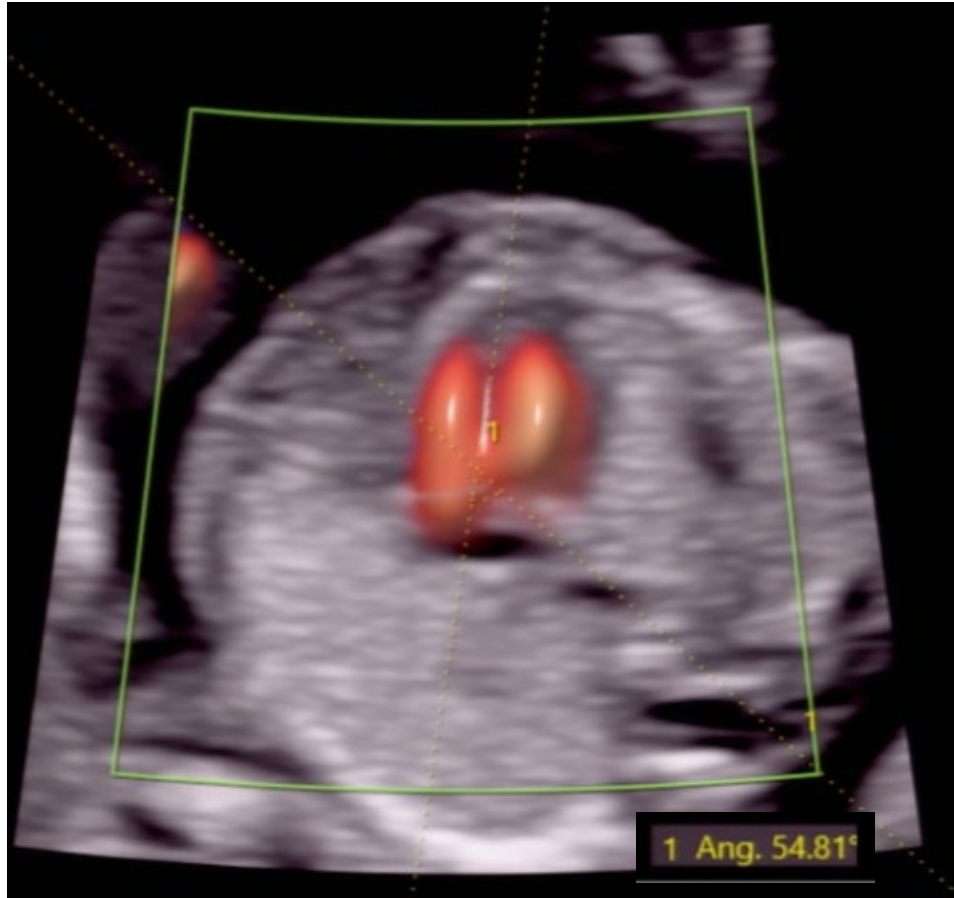
FHR demonstrated by M-mode; clip preferred



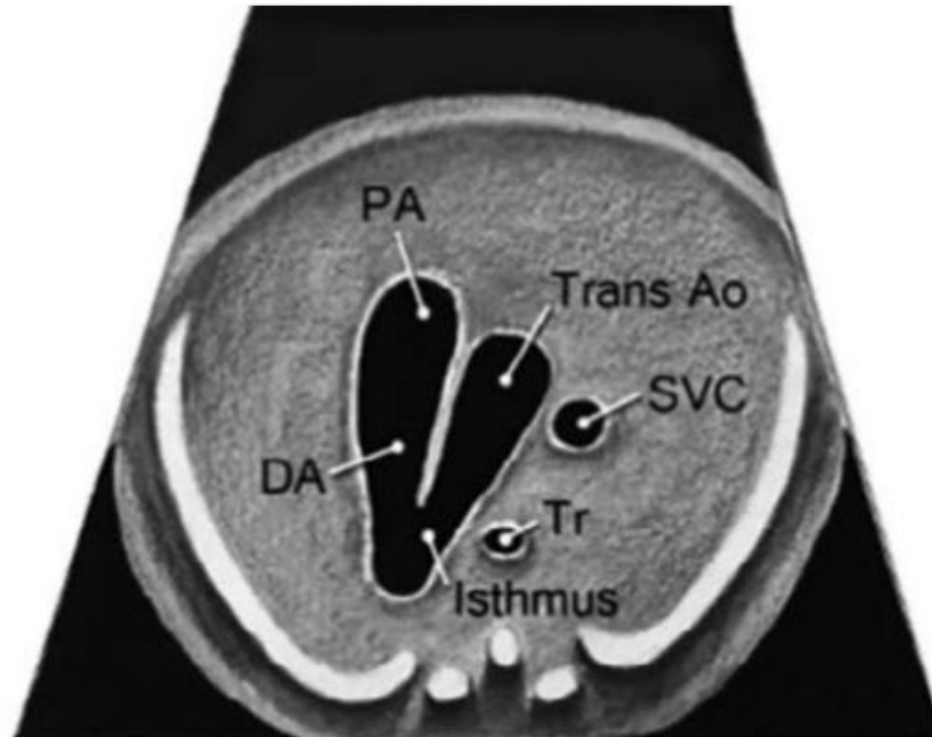
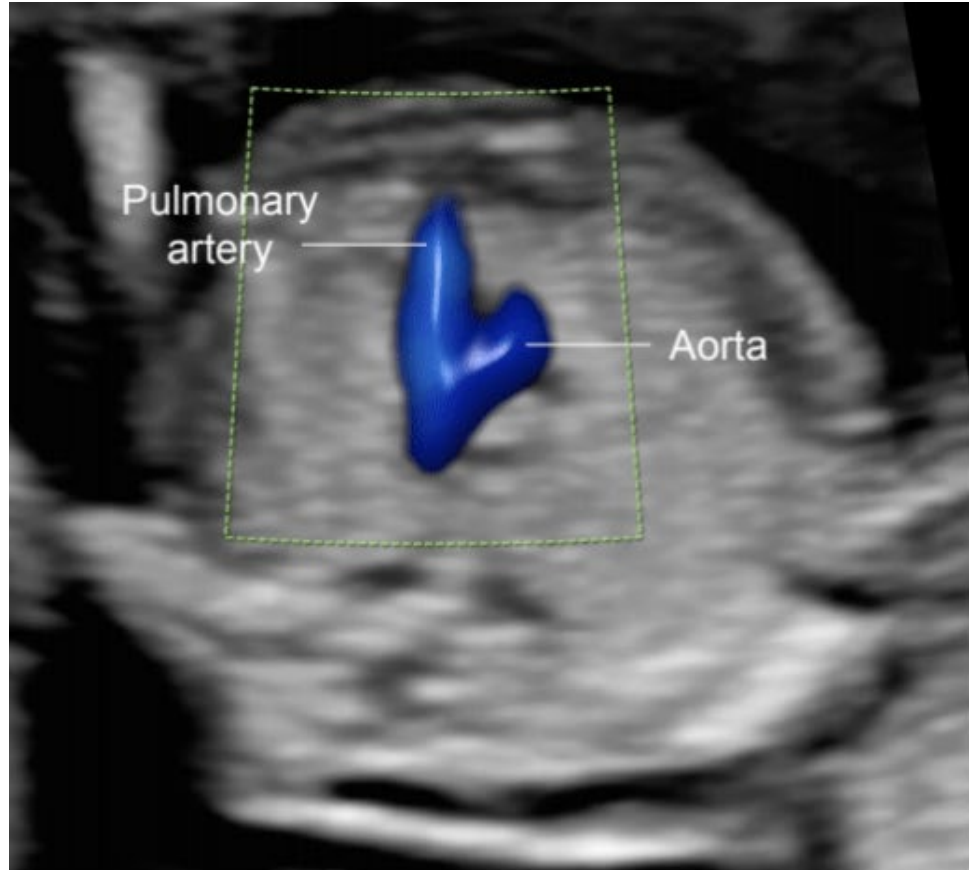
Cardiac position and axis



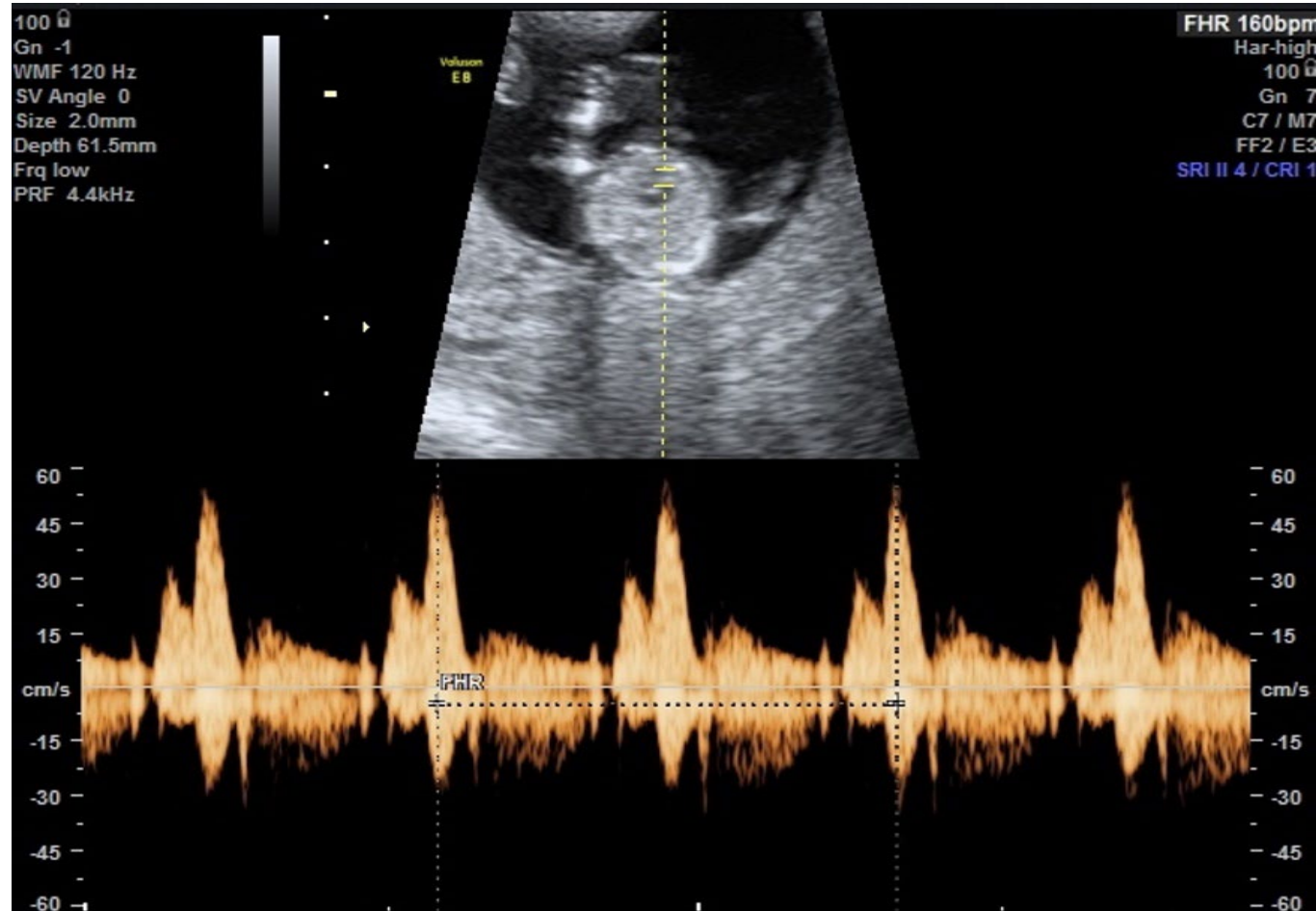
Cardiac angle measurement



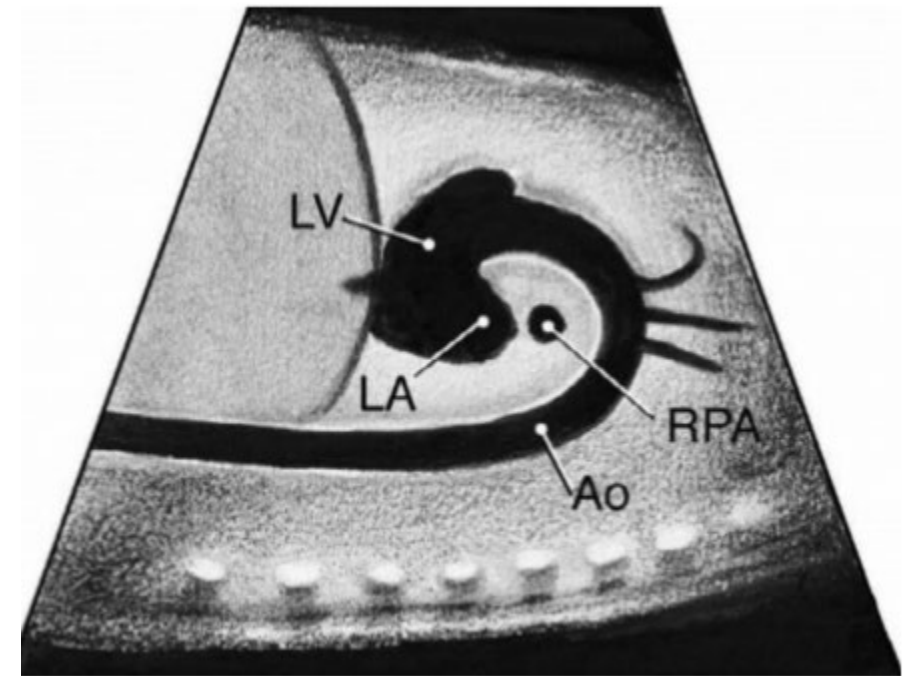
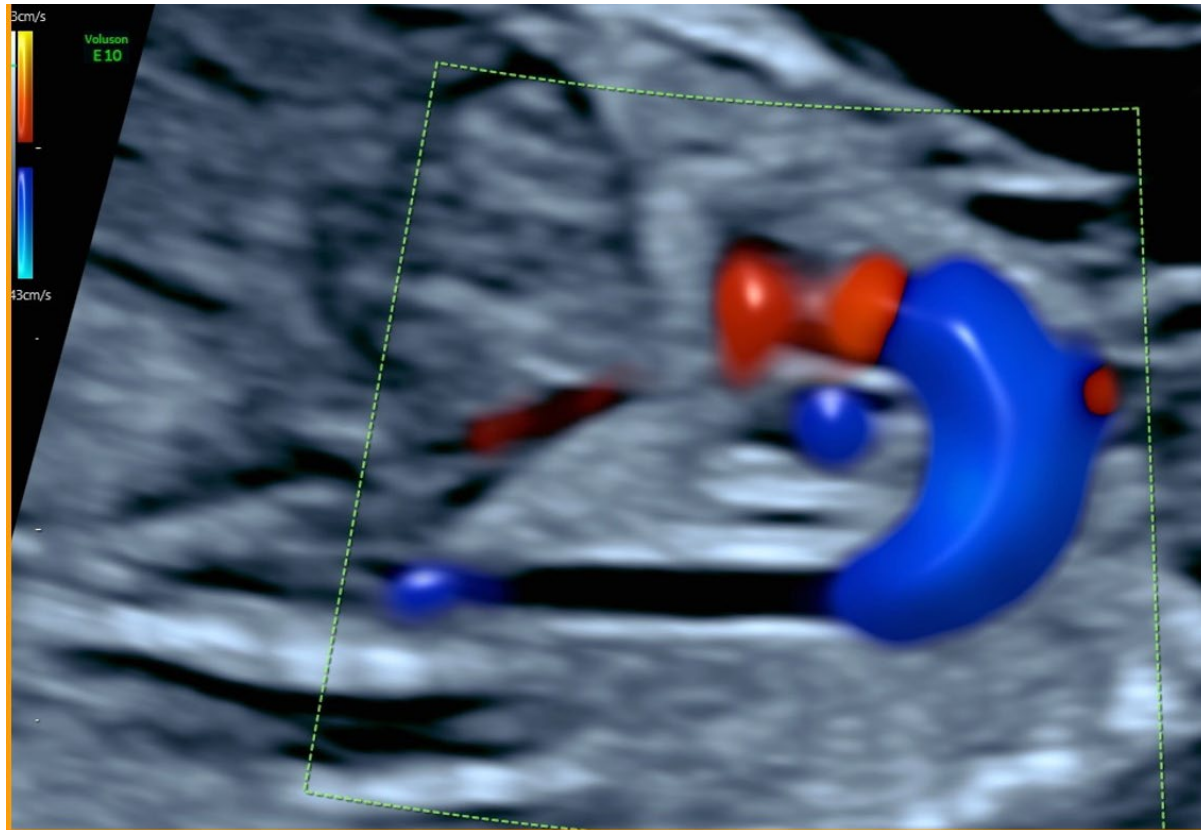
3 vessel trachea view with color



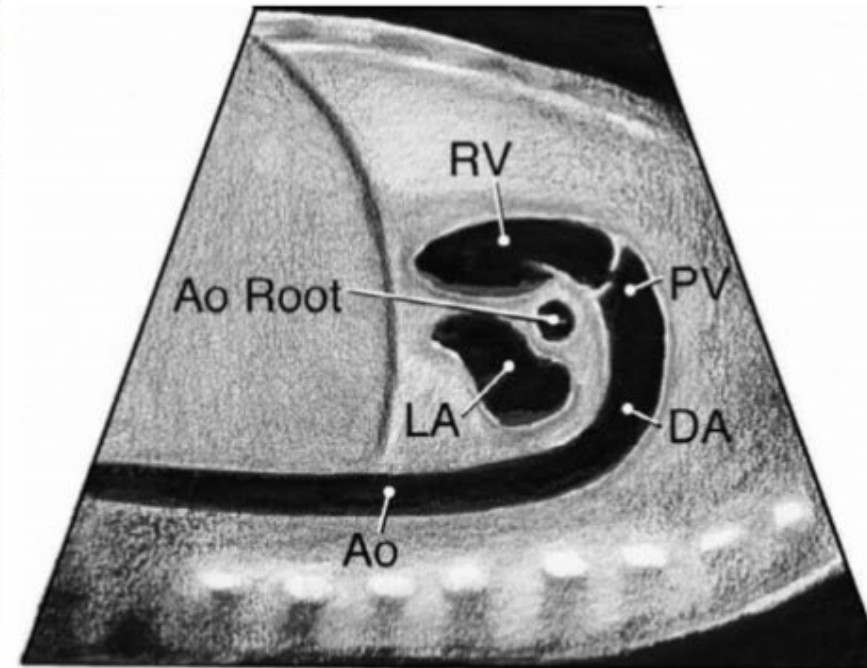
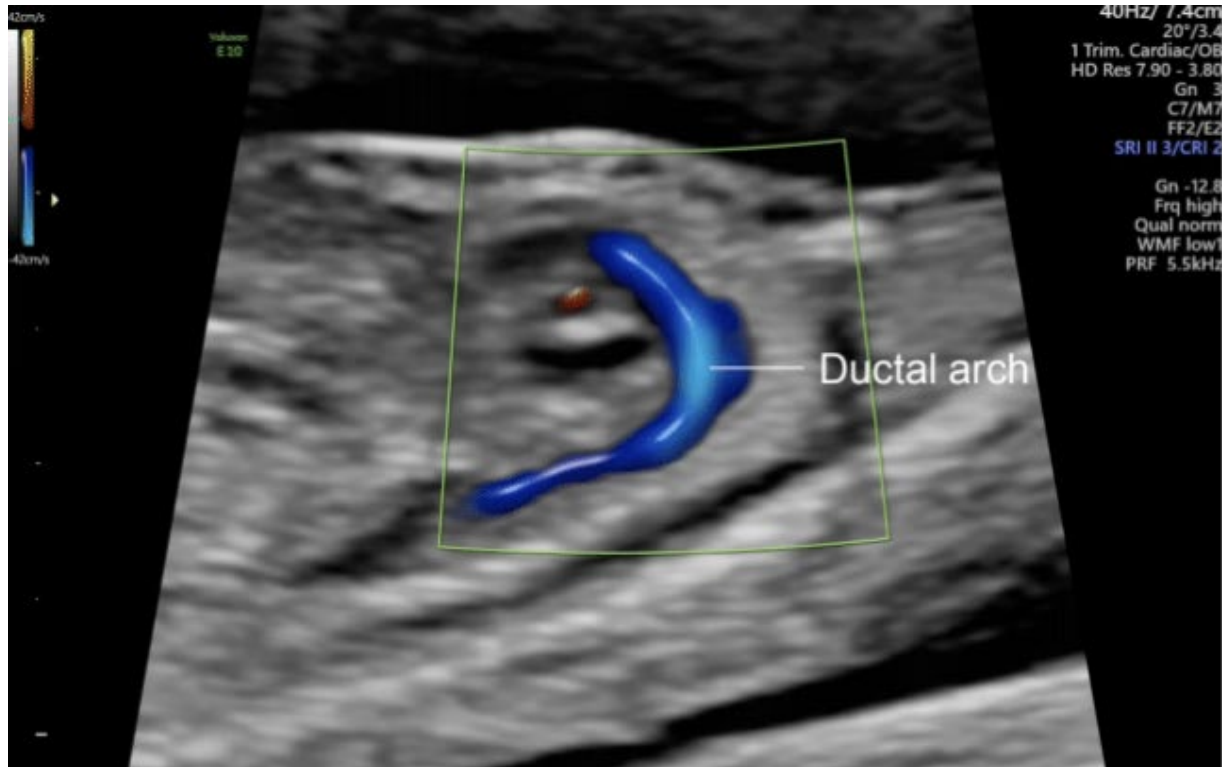
Tricuspid valve flow



Sagittal aortic arch with color



Sagittal ductal arch with color



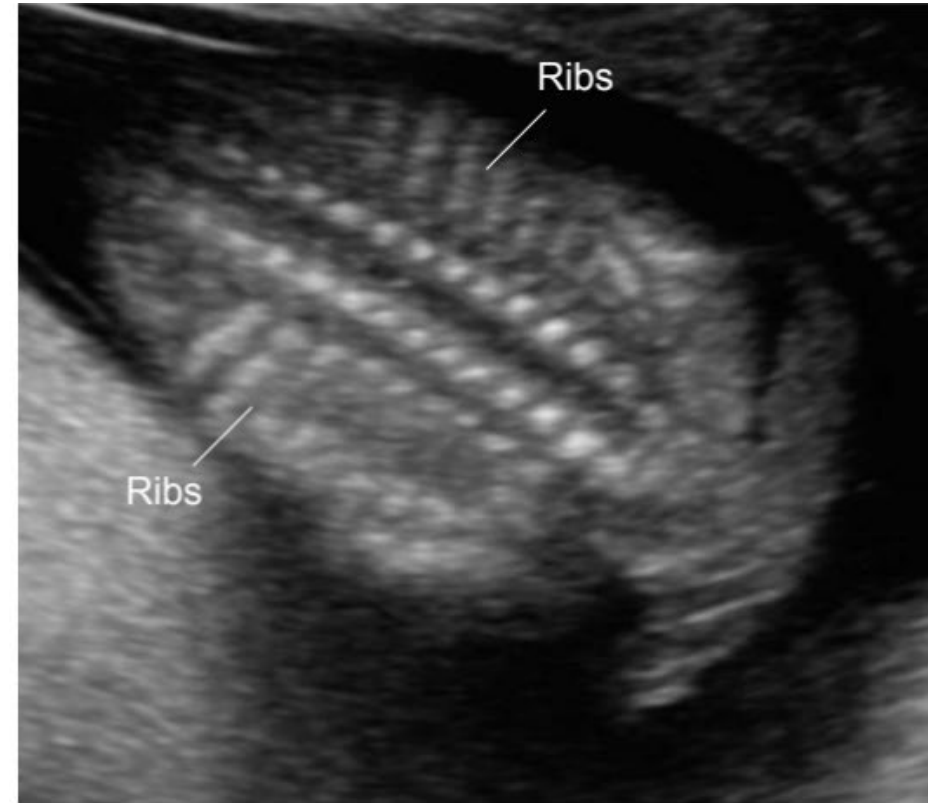
Symmetric lungs demonstrated in coronal and/or axial



Ribs demonstrated with normal shape, length, and ossification

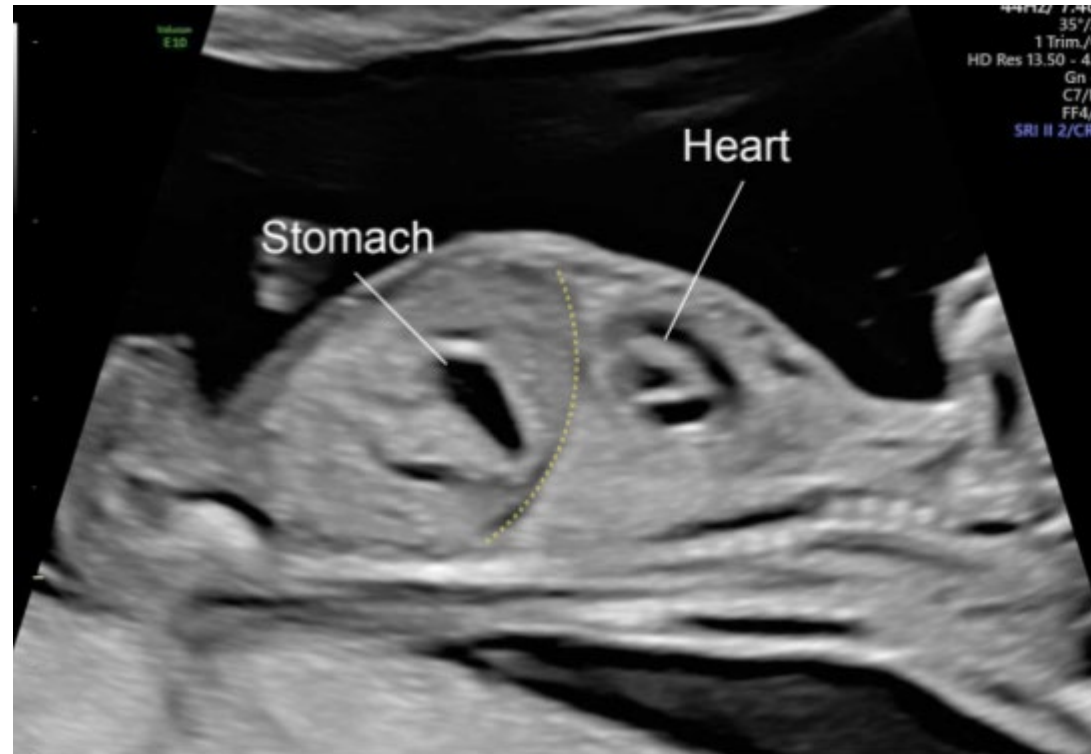


Axial

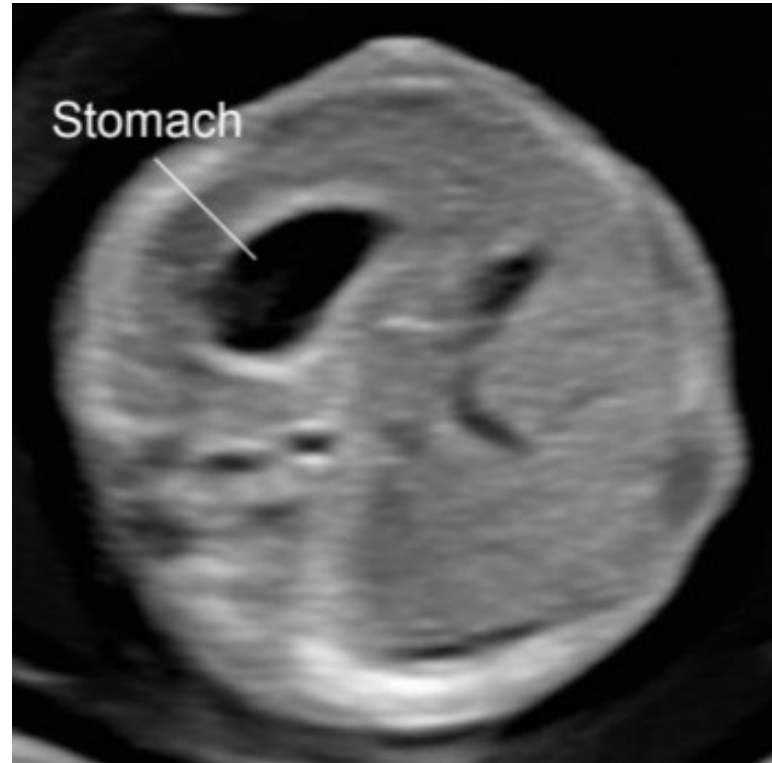


Coronal

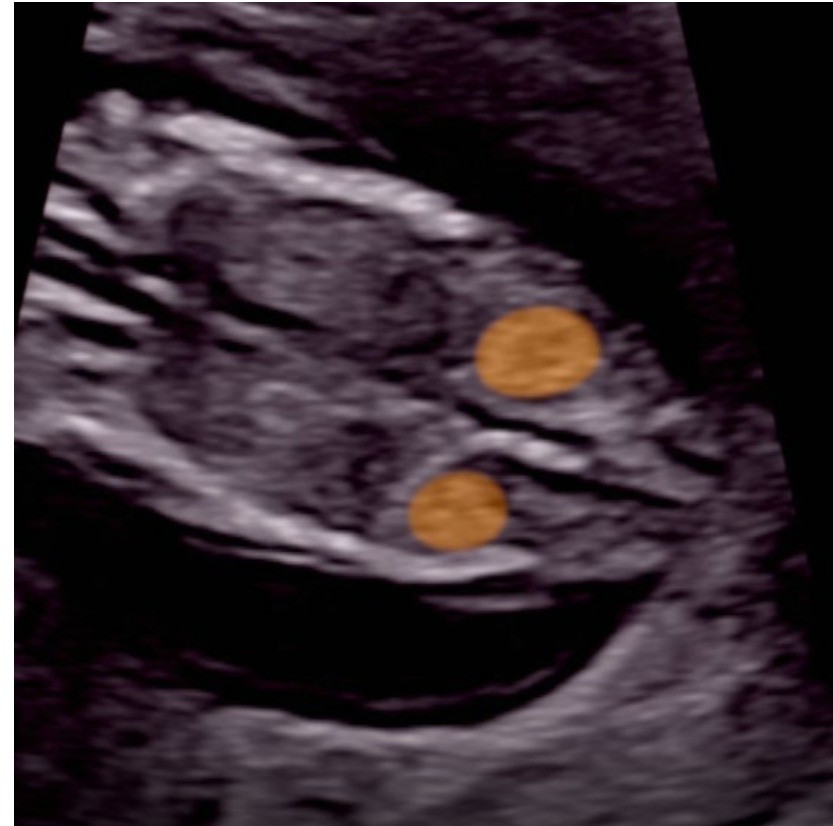
Sagittal diaphragm demarcation



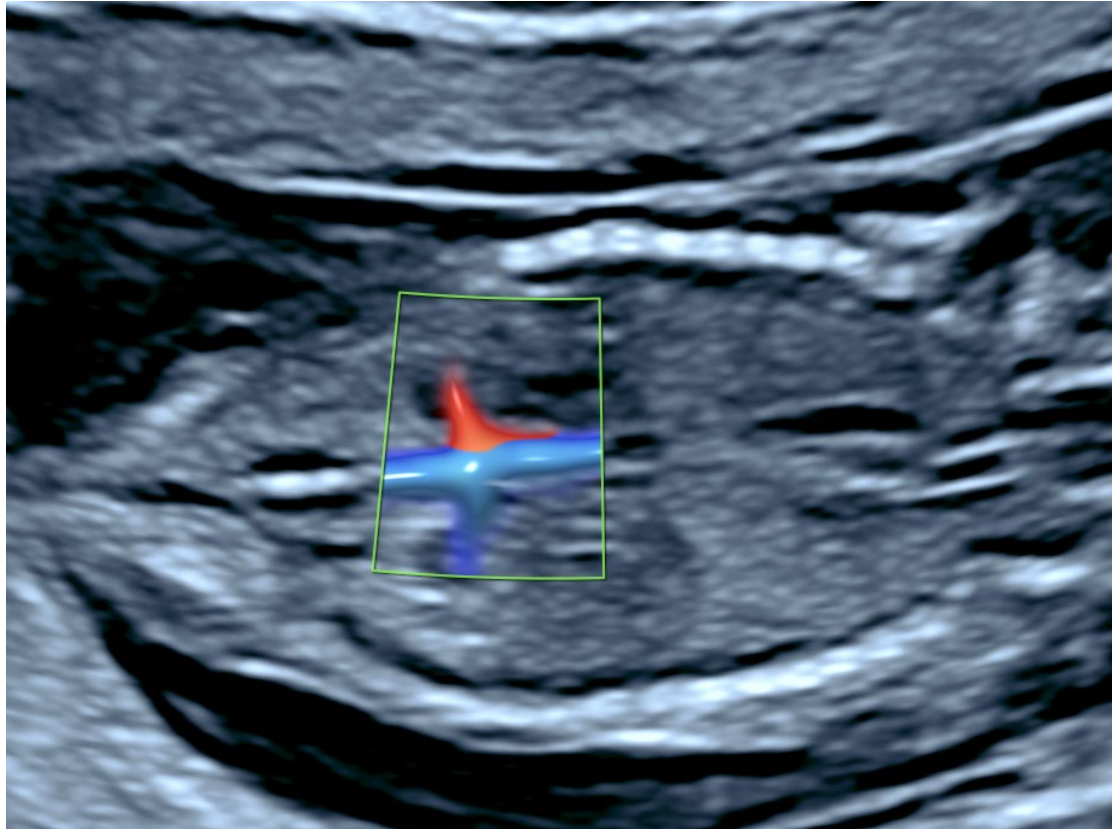
Axial plane at the level of the stomach; stomach demonstrated on the left side



Coronal plane at the level of the kidneys



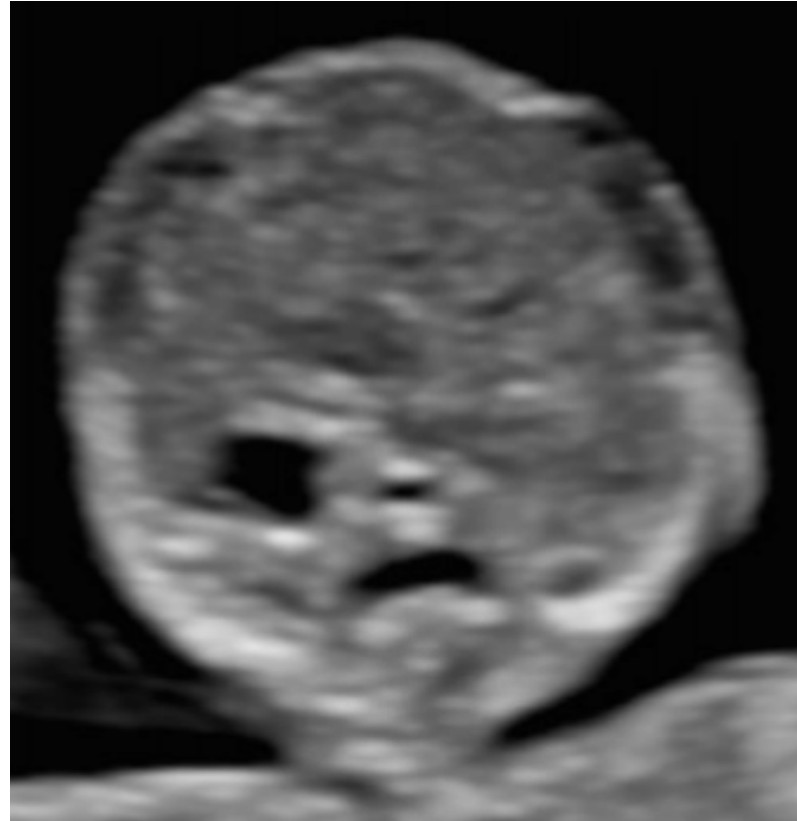
Color of renal vessels performed if kidneys not well seen or if indicated or suspicious



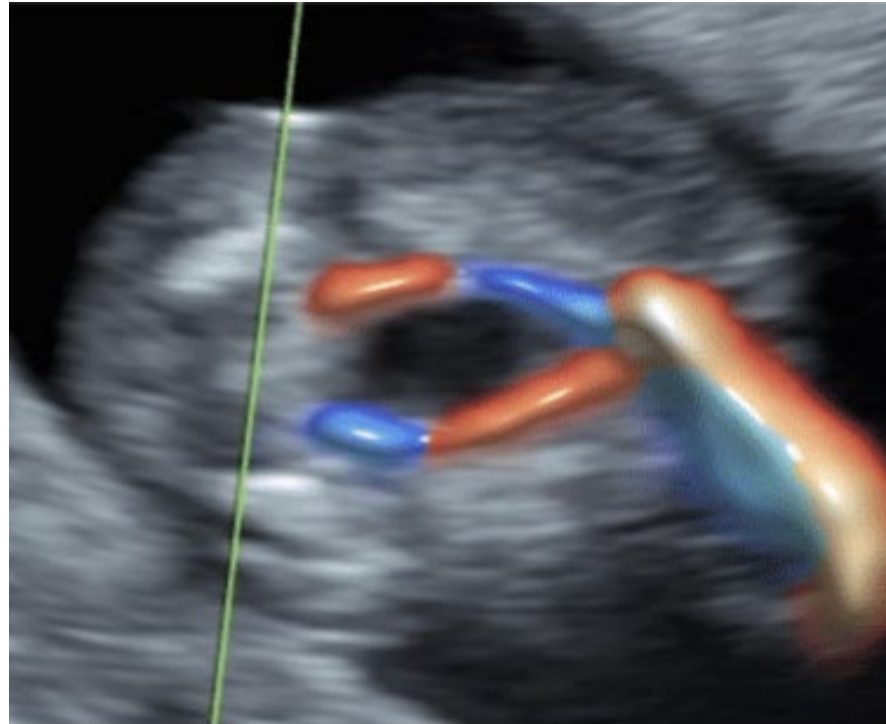
Axial plane at the level of the bladder/cord insertion (bladder with fluid)



Liver demonstrated on the right



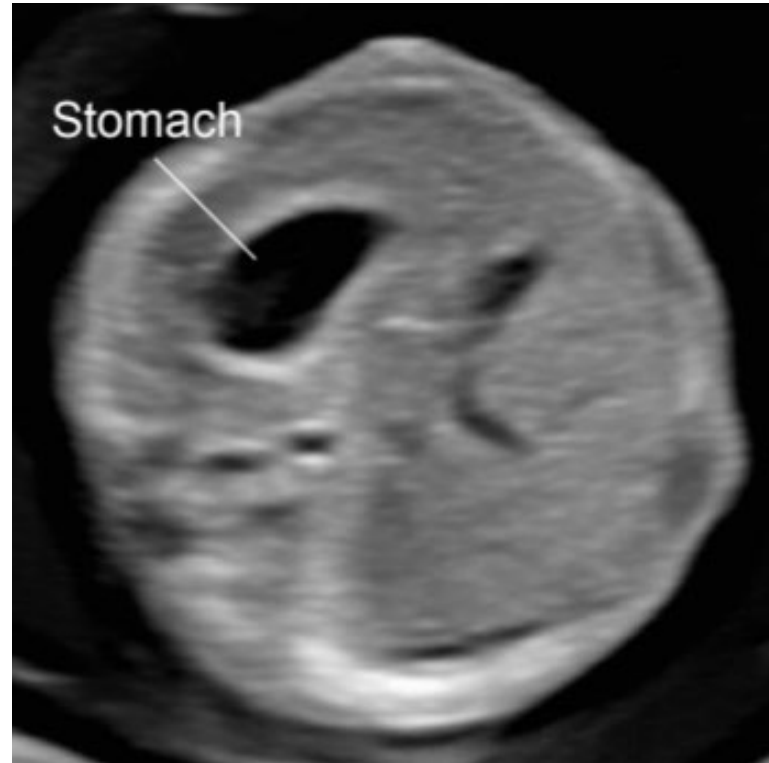
Color Doppler of umbilical arteries on each side of the bladder



Umbilical cord insertion into the abdominal wall



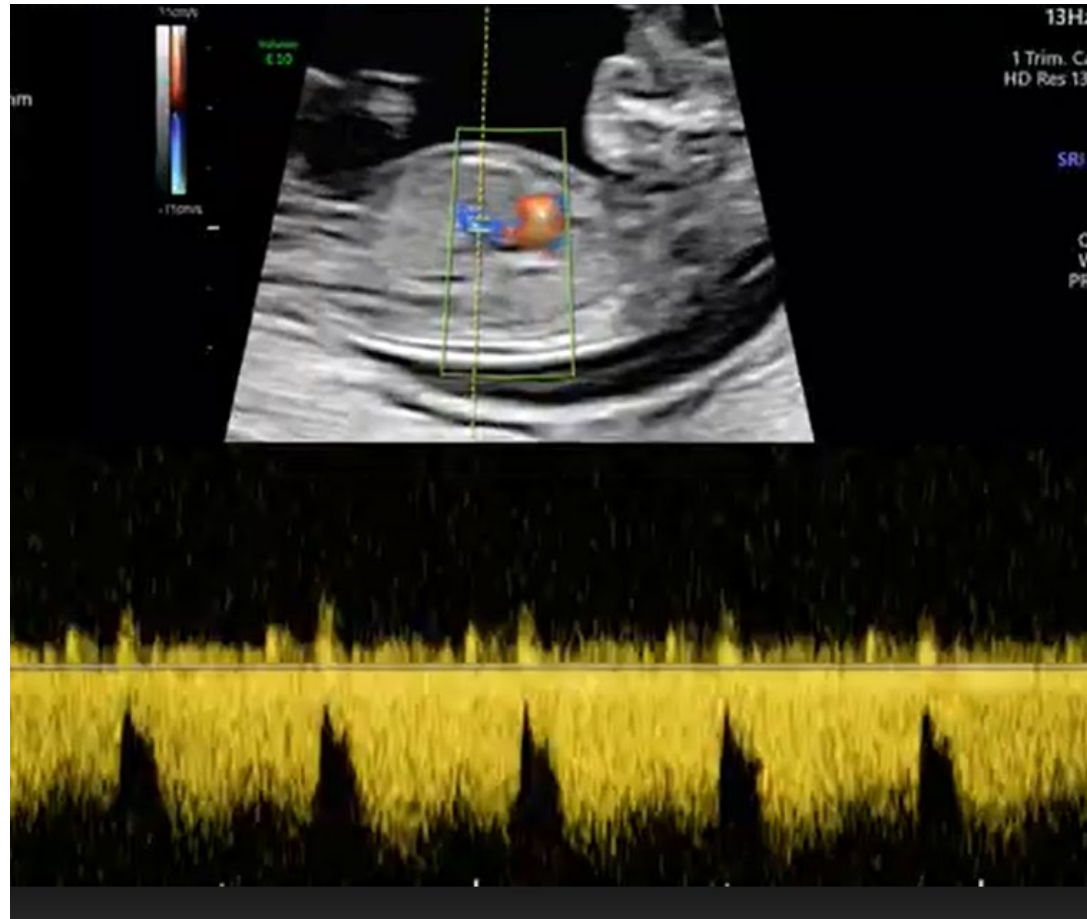
Portal vein coursing away from stomach



Sagittal contour of the anterior wall (rule out hydrops/masses)



Ductus venosus flow



Four extremities



3 long bones present; 3D assessment performed



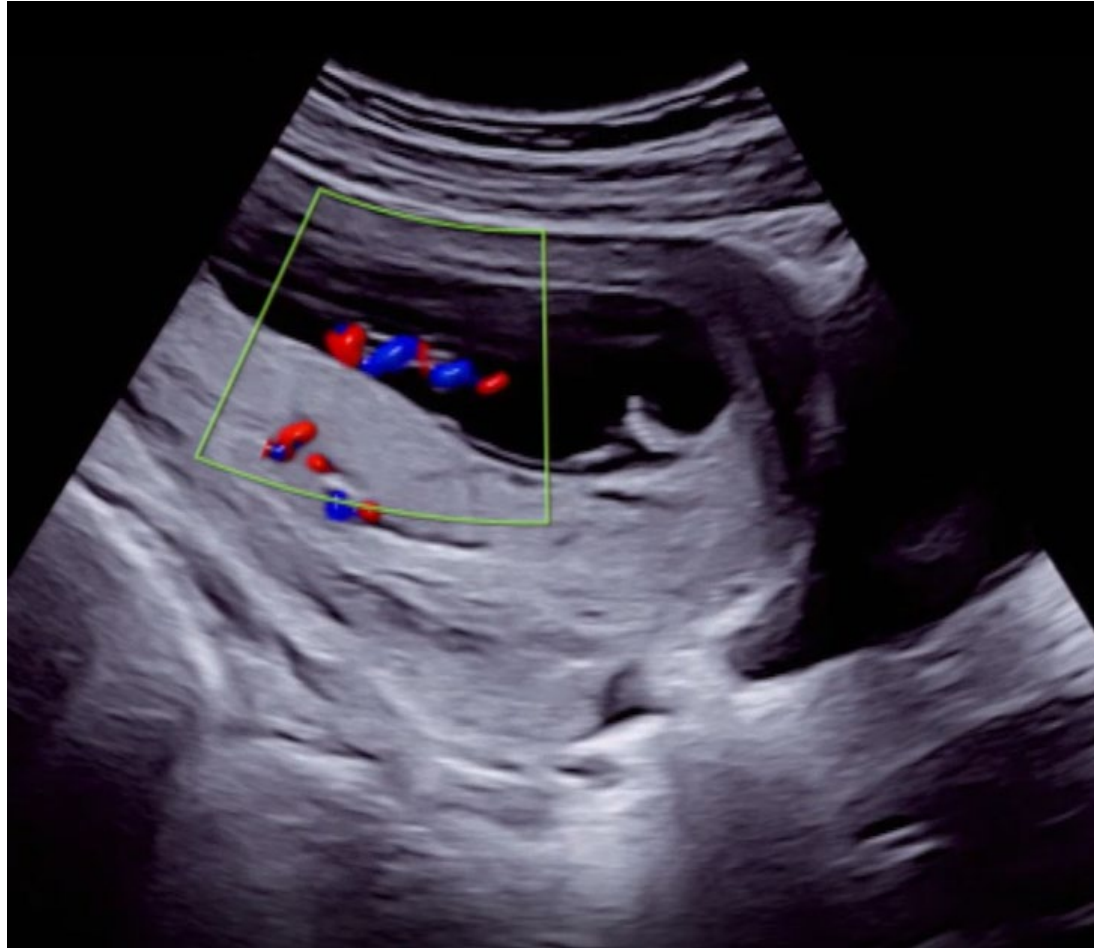
2D confirmation of hands/fingers and feet/toes



Longitudinal vertebral elements/alignment and skin edge



Umbilical cord insertion into the placenta



Placental echotexture and relationship with internal os or lower uterine segment

