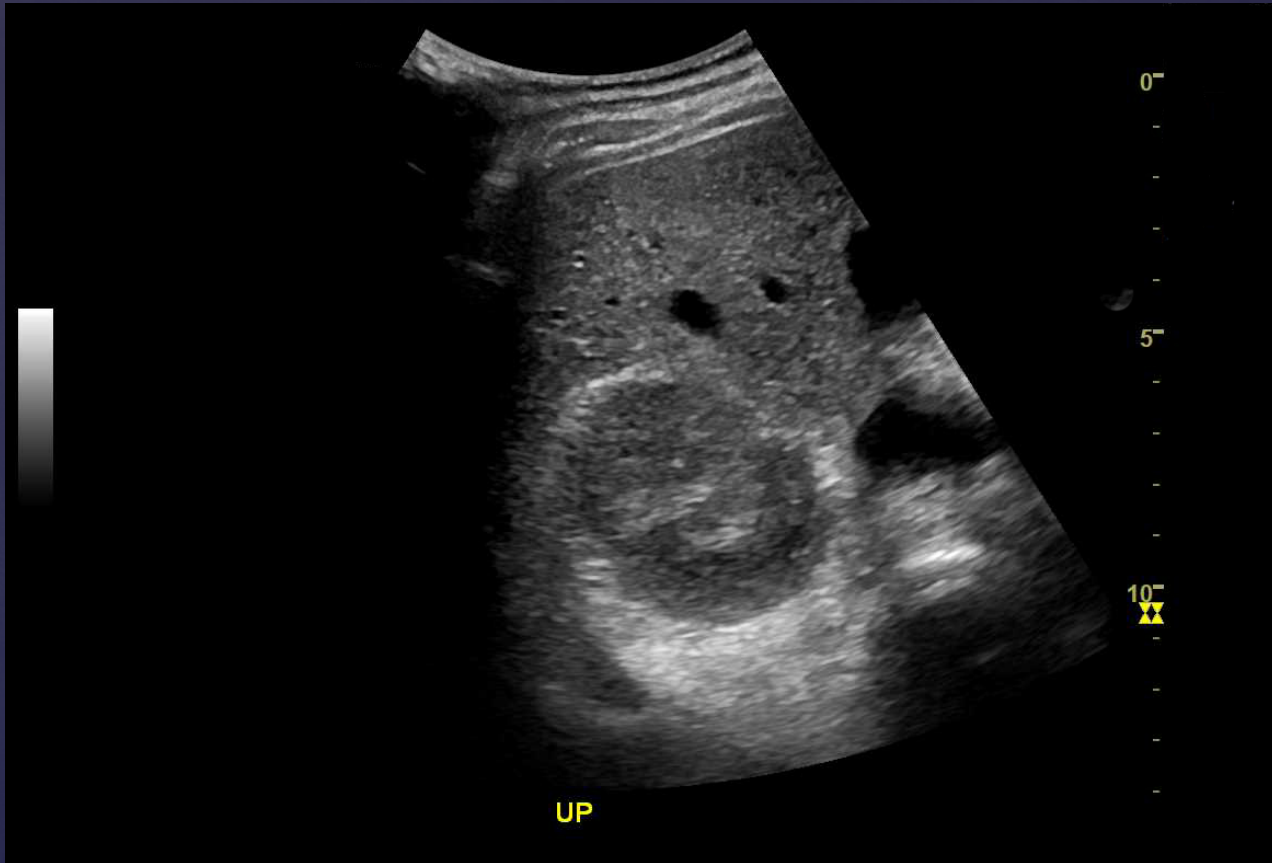


AIUM Image Library: Urologic Ultrasound



The American Institute of Ultrasound in Medicine thanks GE for providing equipment used to obtain some of the images within this document. We appreciate their commitment and generous support for ultrasound education.

Transverse Kidney Superior



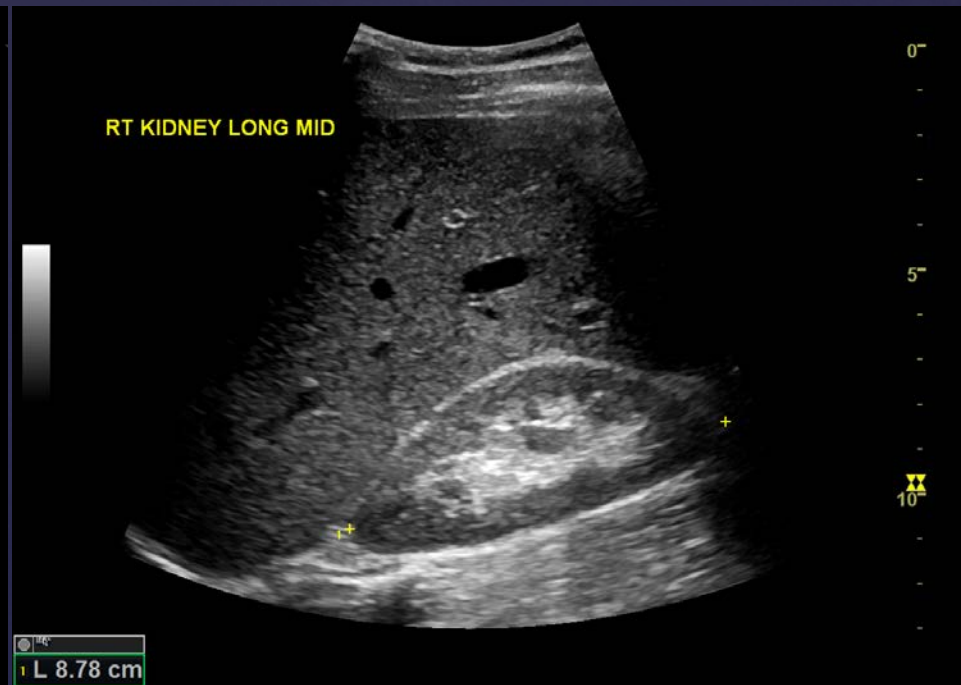
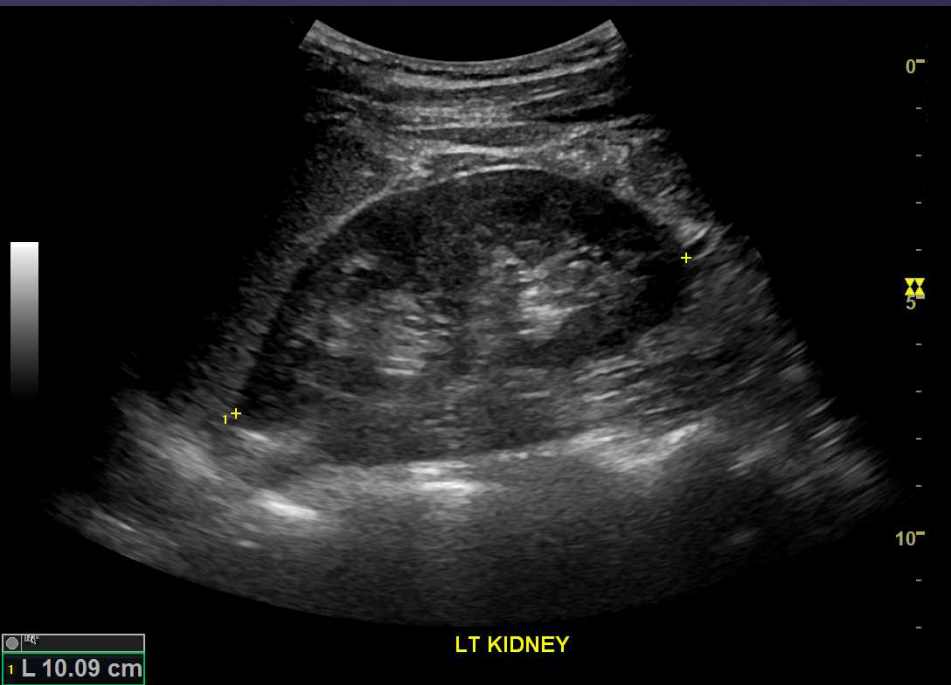
Transverse Kidney Mid



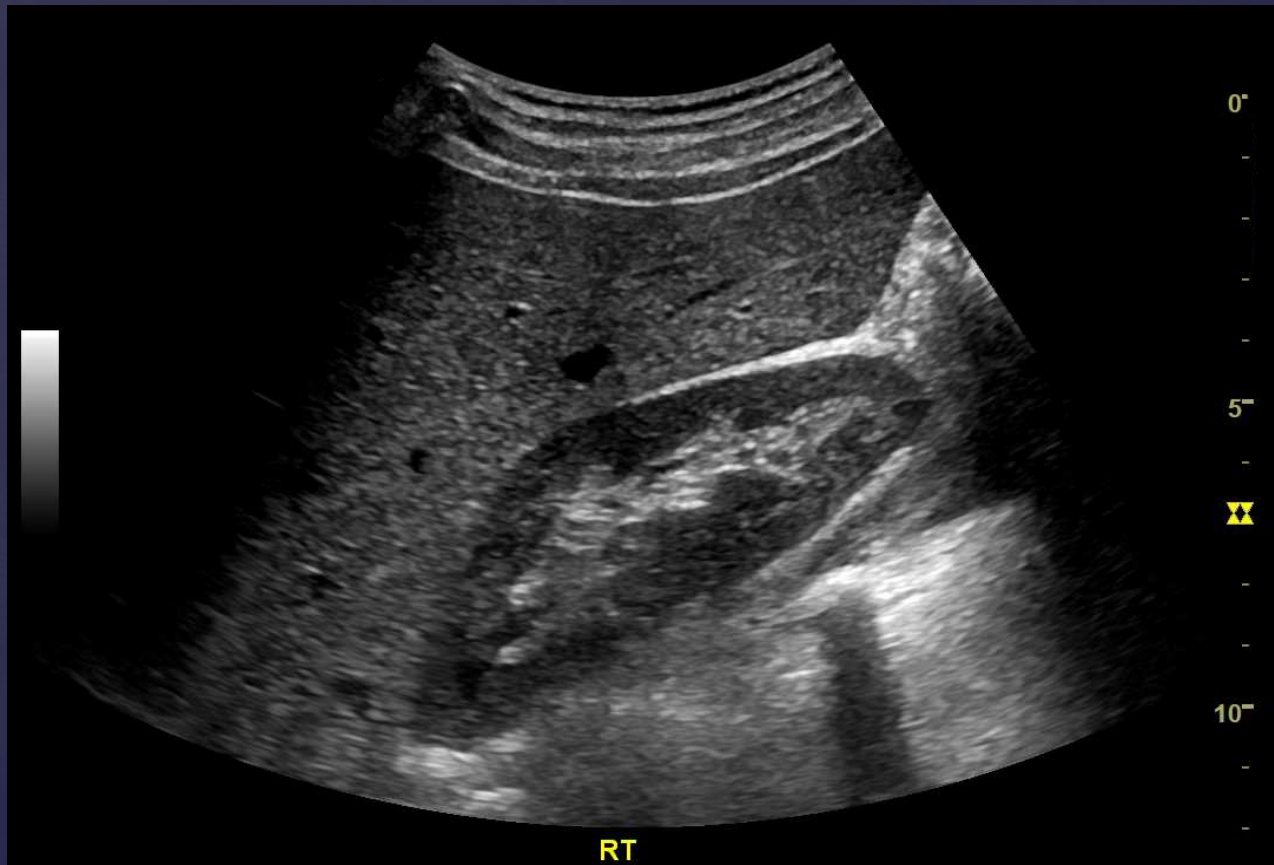
Transverse Kidney Inferior



Kidney Length Measurements



Kidney and Liver Comparison



Kidney and Spleen Comparison



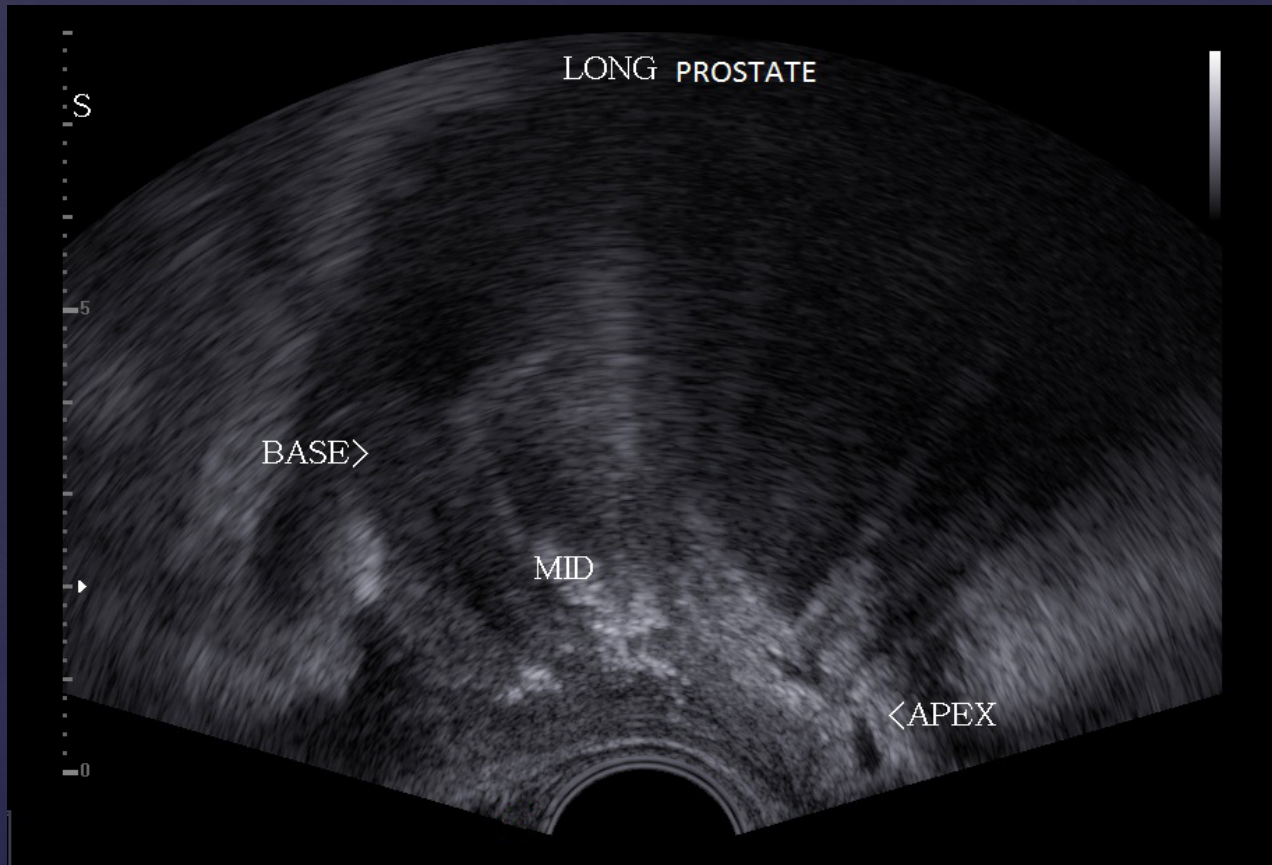
Transverse Bladder



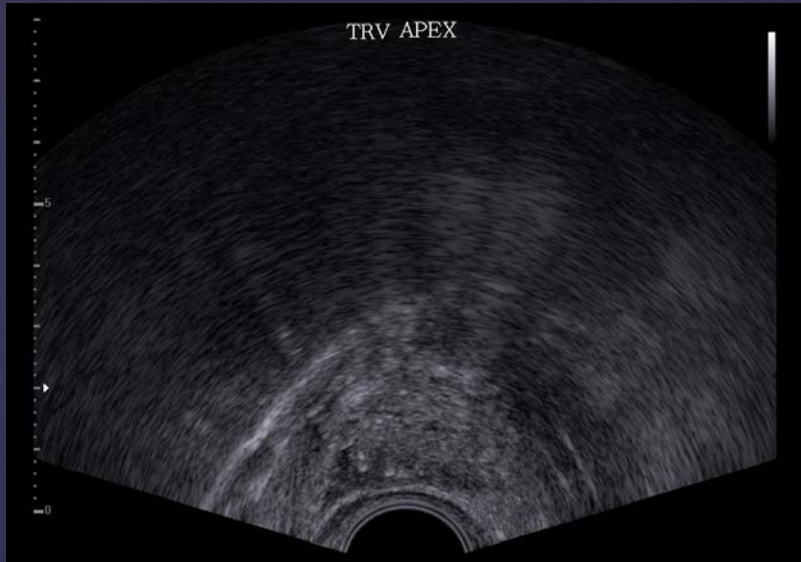
Longitudinal Bladder



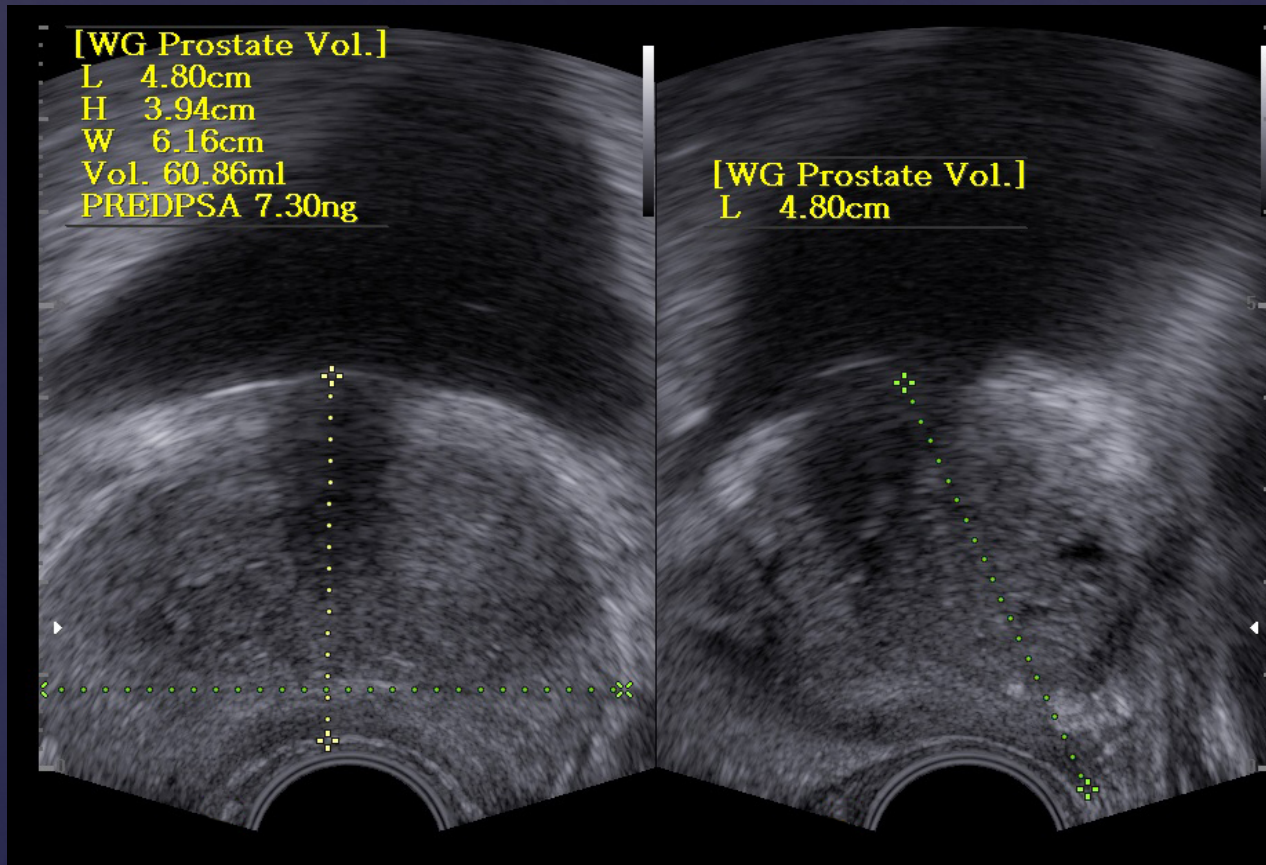
Longitudinal Prostate – Apex to Base



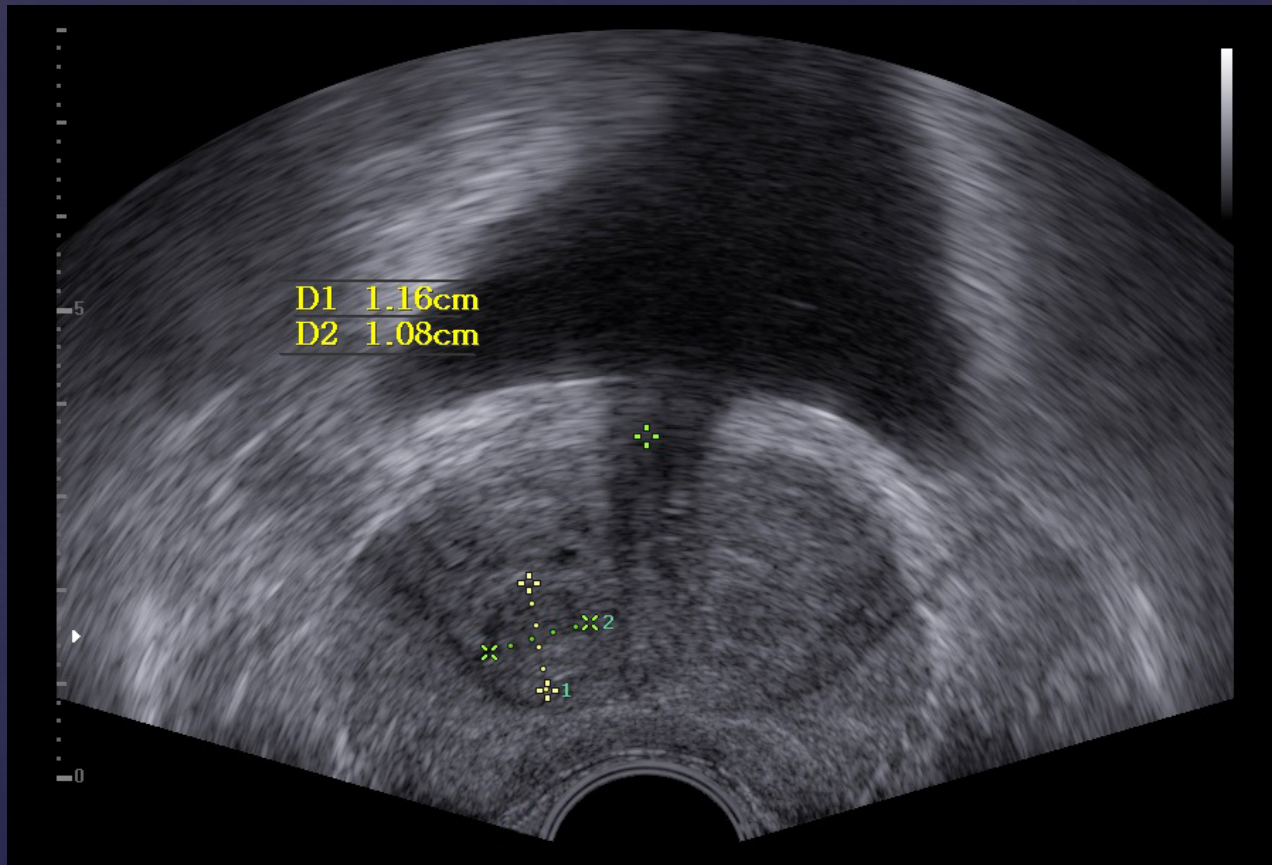
Coronal Prostate – Apex to Base



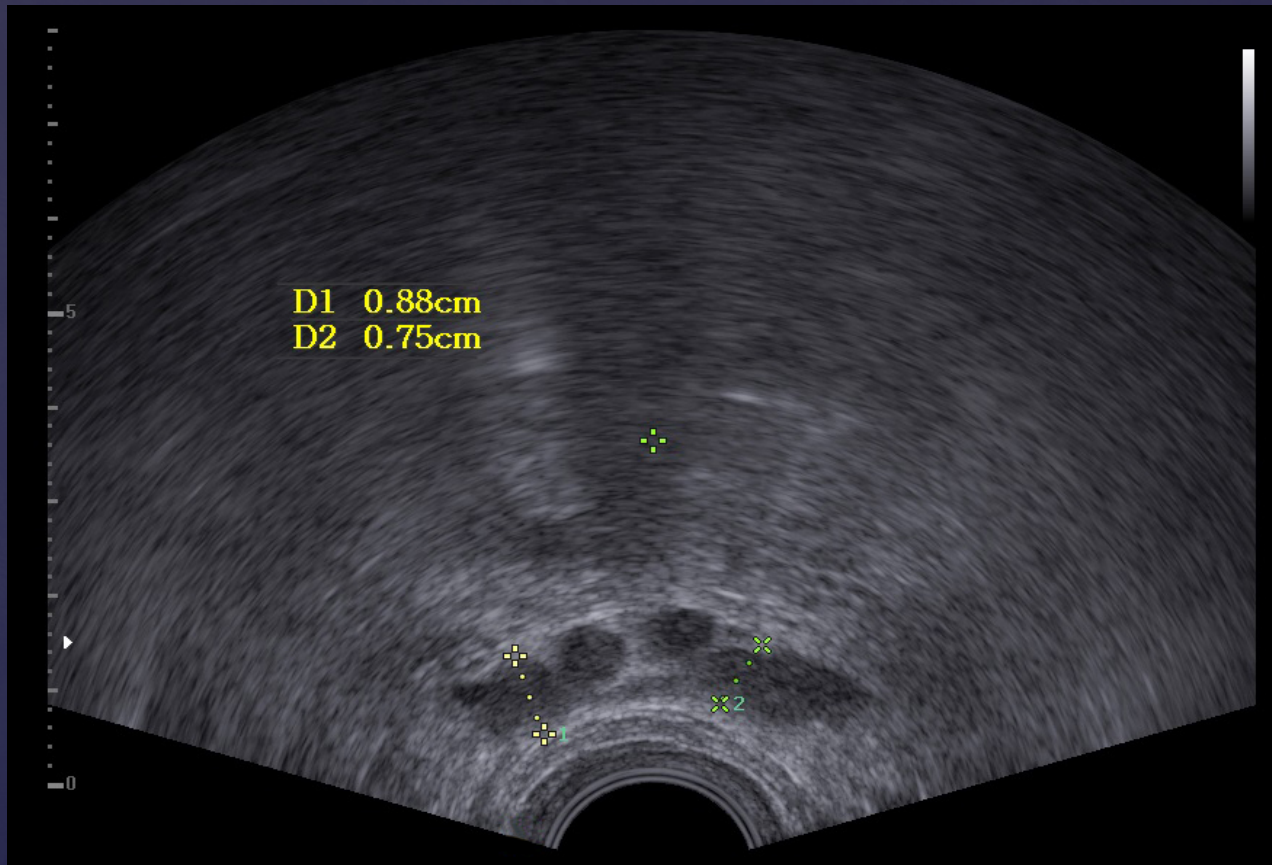
Coronal Prostate – Volume



Coronal Prostate – Mass

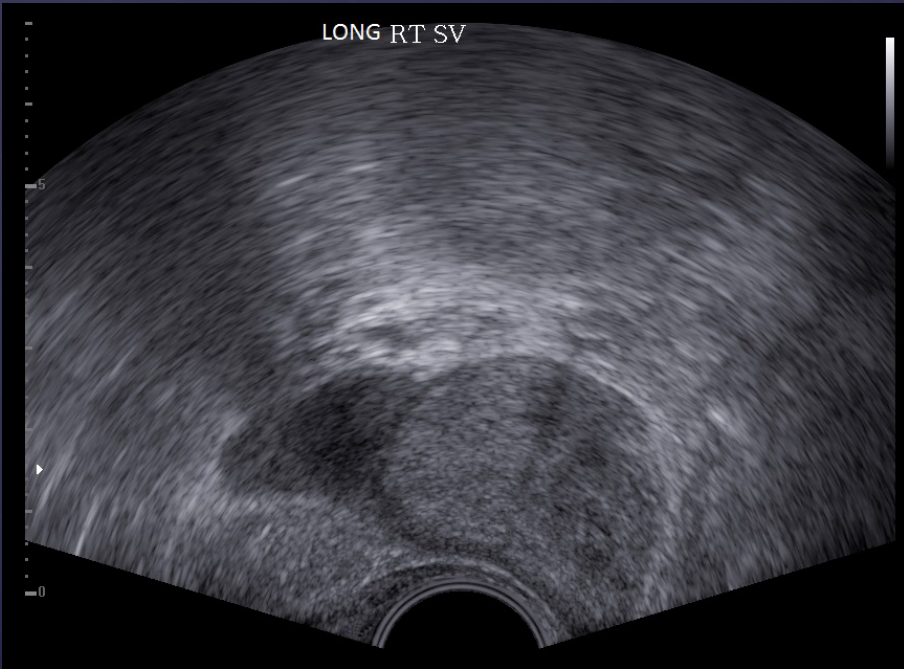


Coronal Prostate – Seminal Vesicles



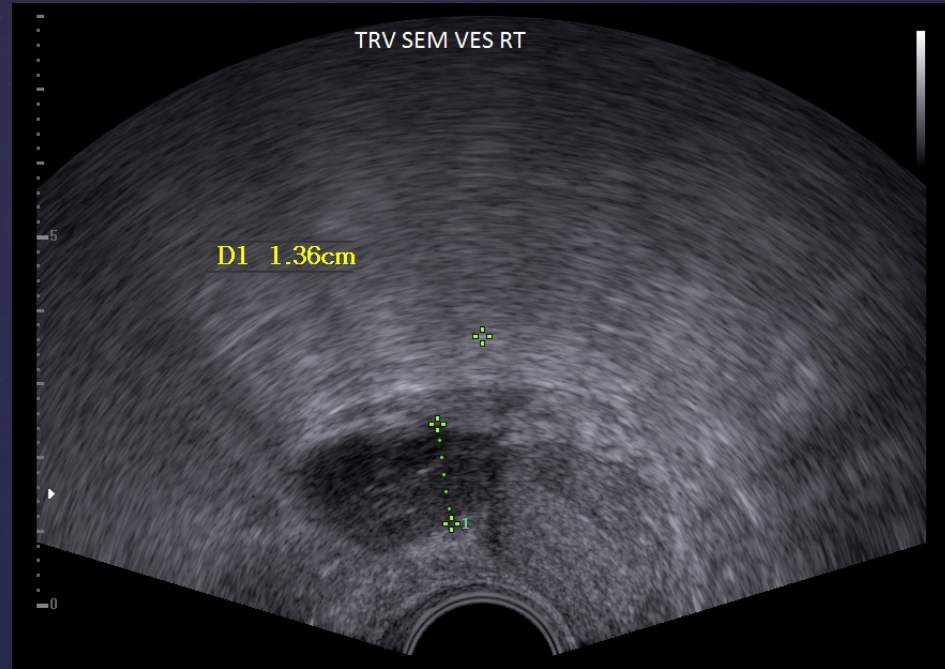
Long and Coronal Prostate – Right Seminal Vesicle

LONG RT SV

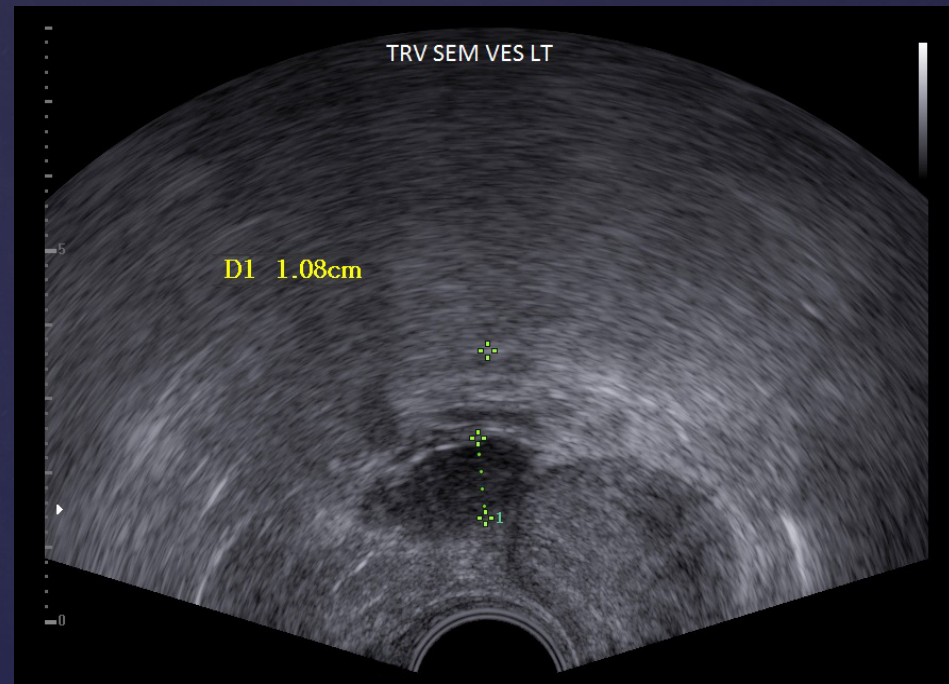


TRV SEM VES RT

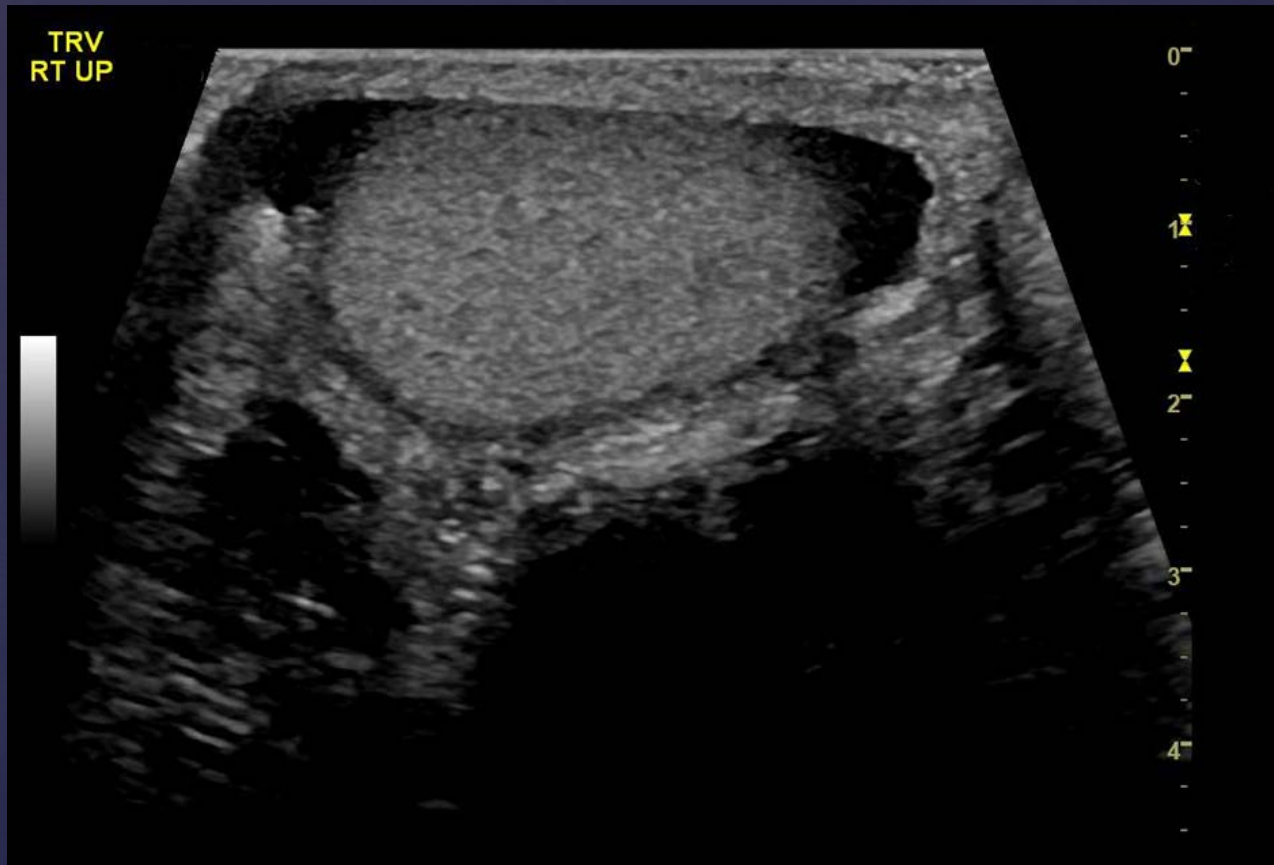
D1 1.36cm



Long and Coronal Prostate – Left Seminal Vesicle



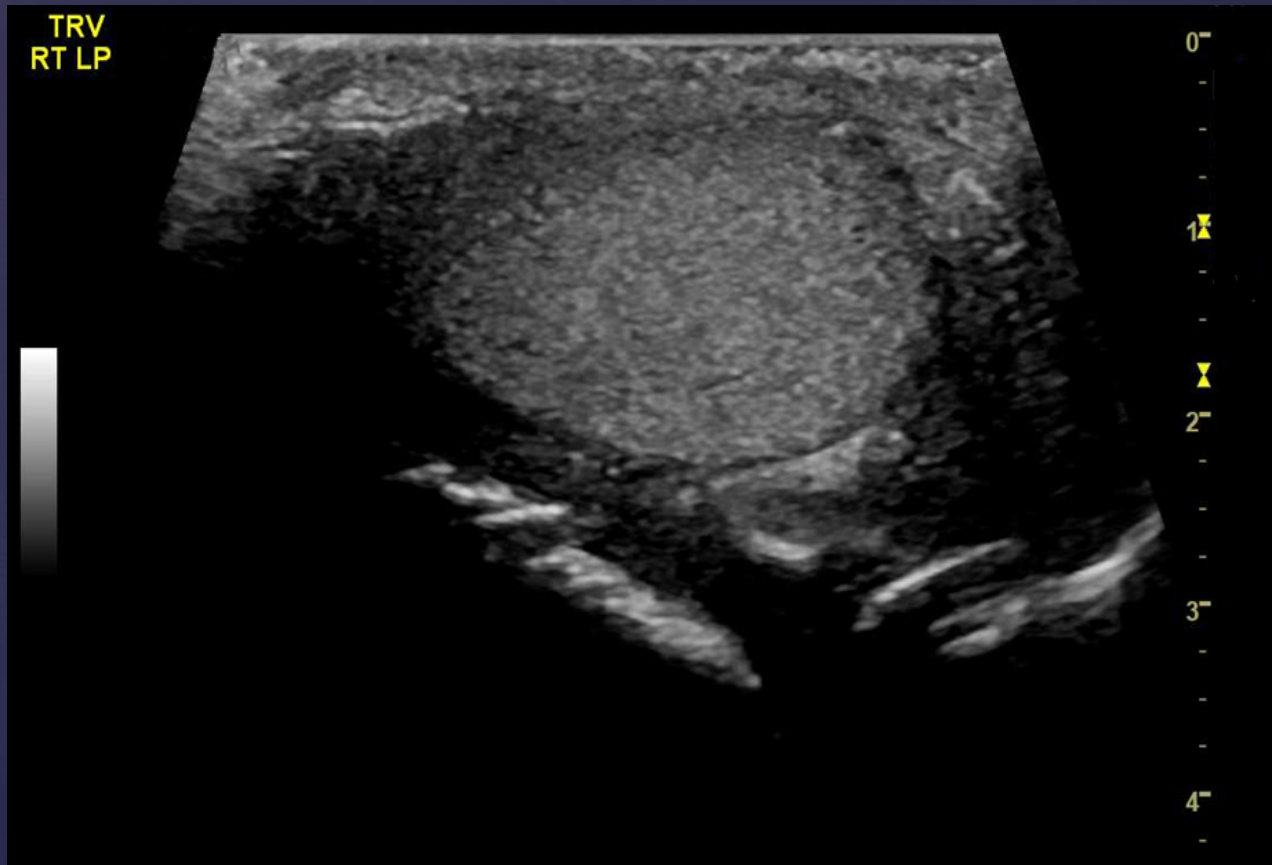
Testis – Transverse Superior



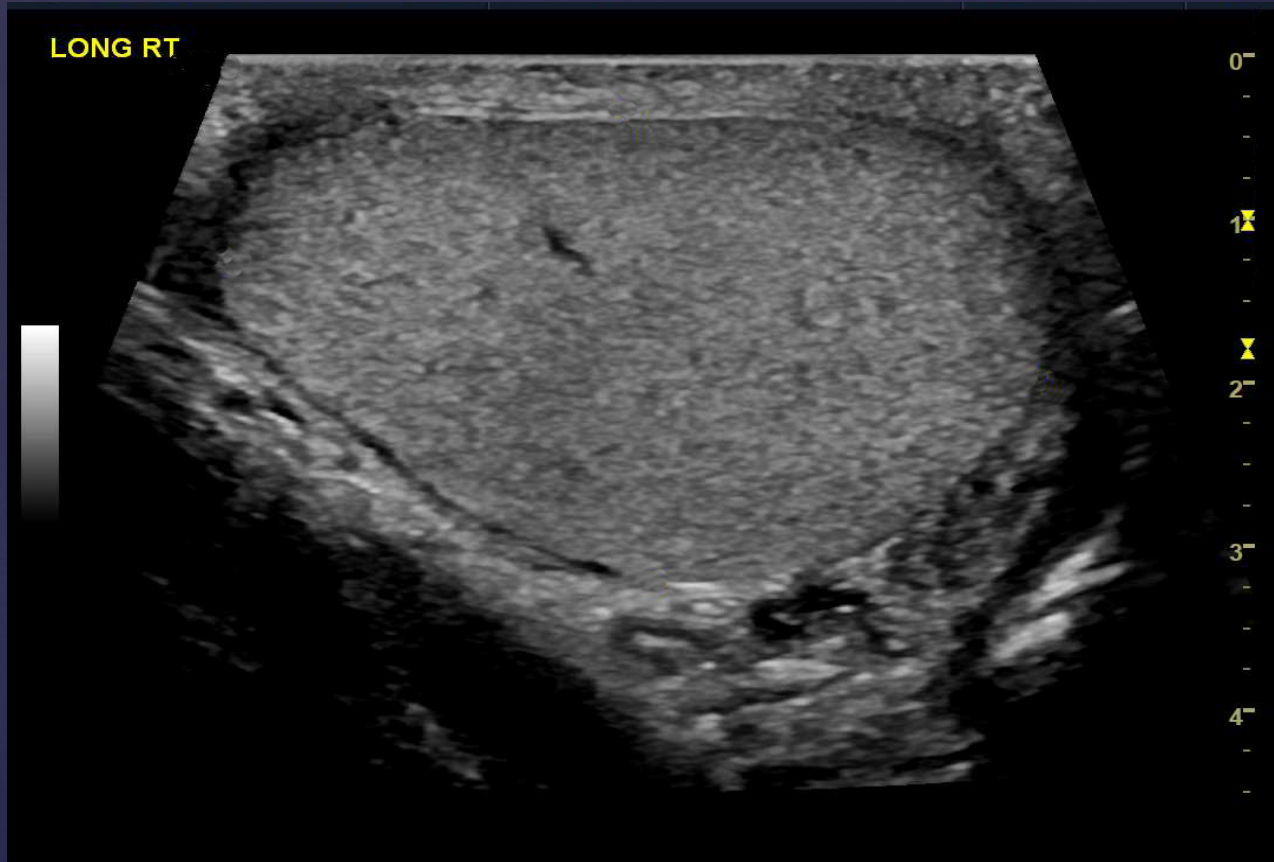
Testis – Transverse Mid



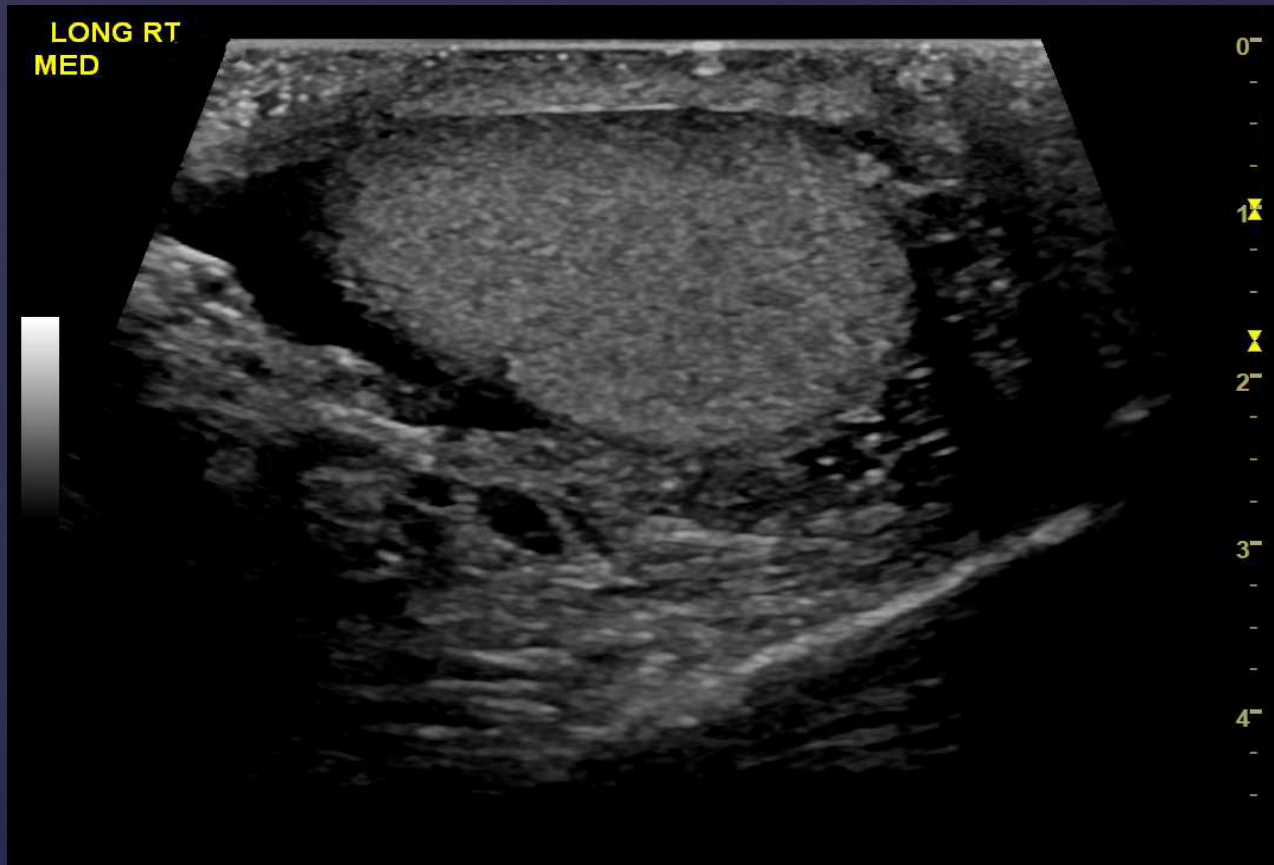
Testis – Transverse Inferior



Testis – Longitudinal Central



Testis – Longitudinal Medial



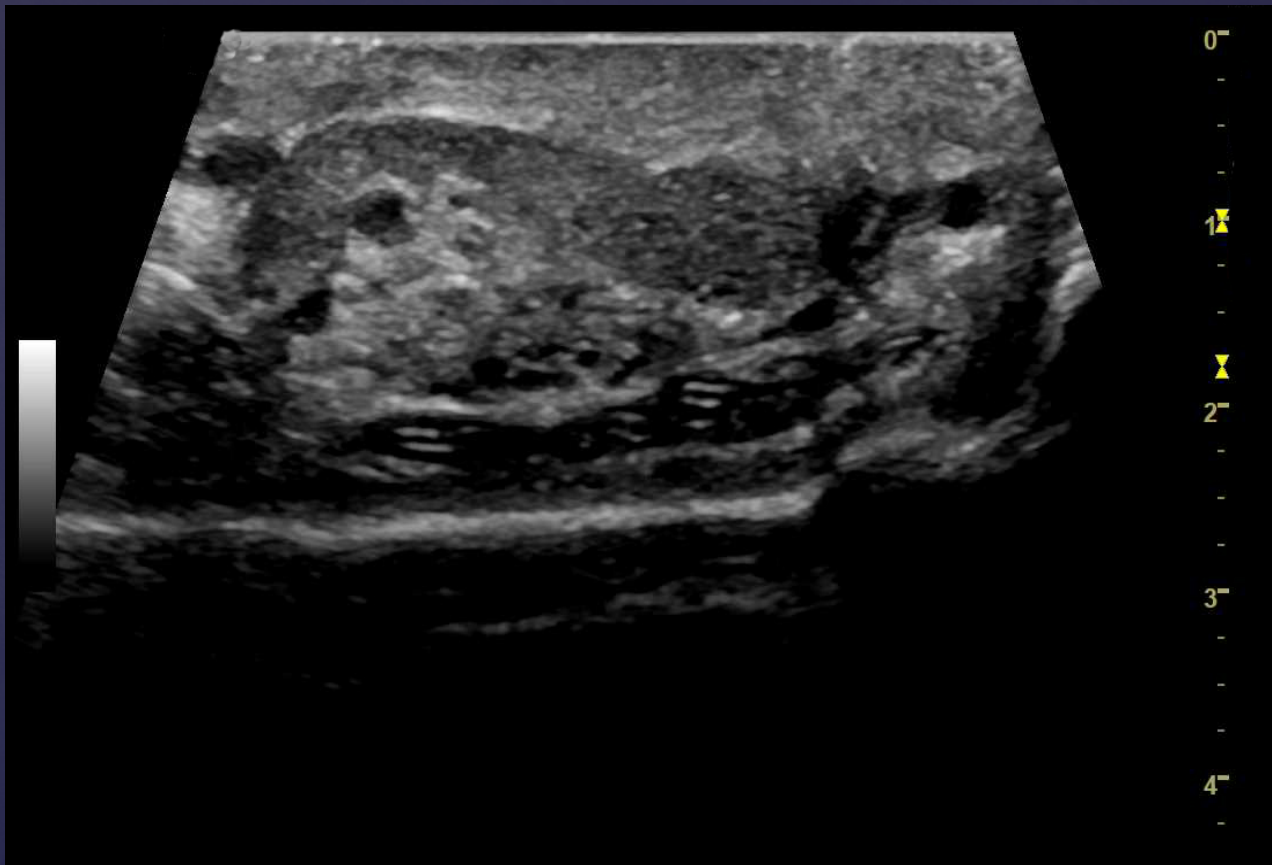
Testis – Longitudinal Lateral



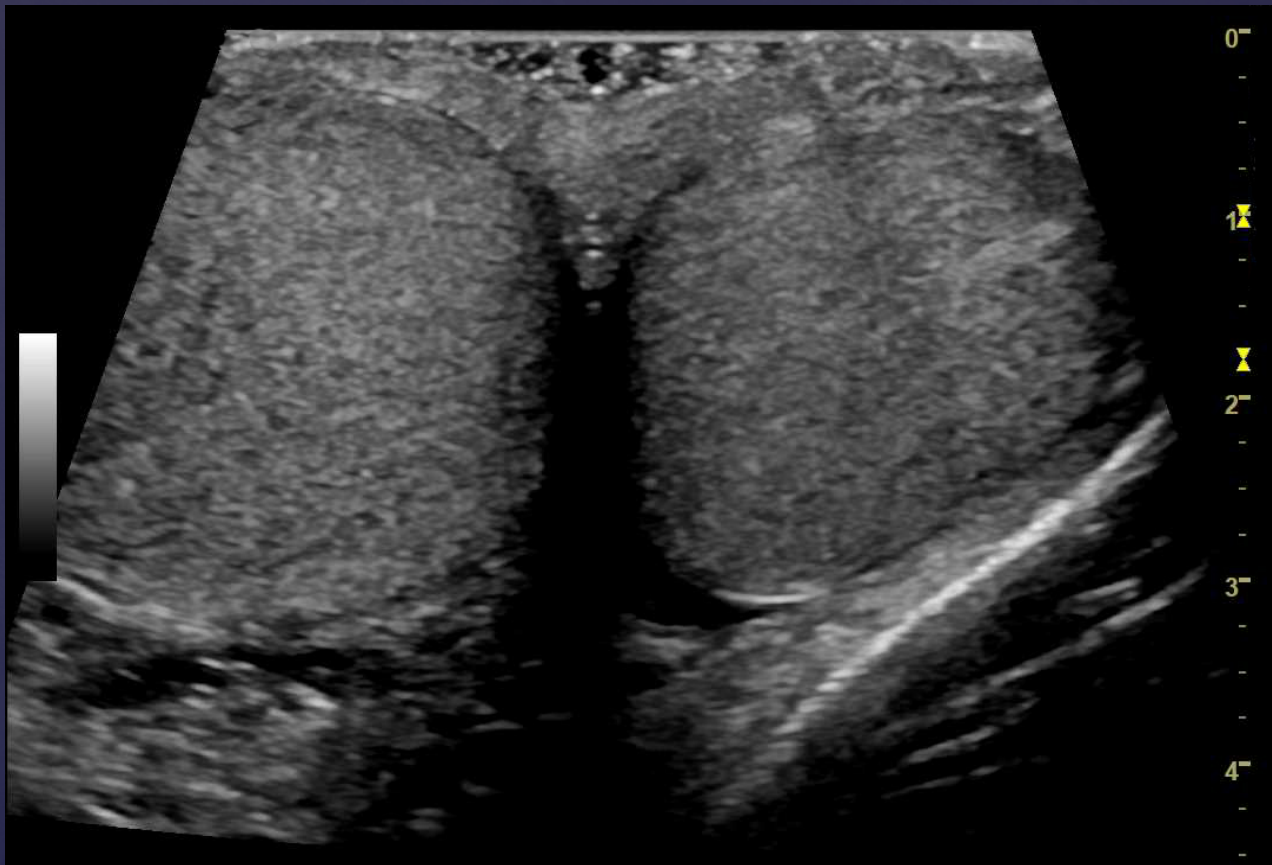
Epididymis Head



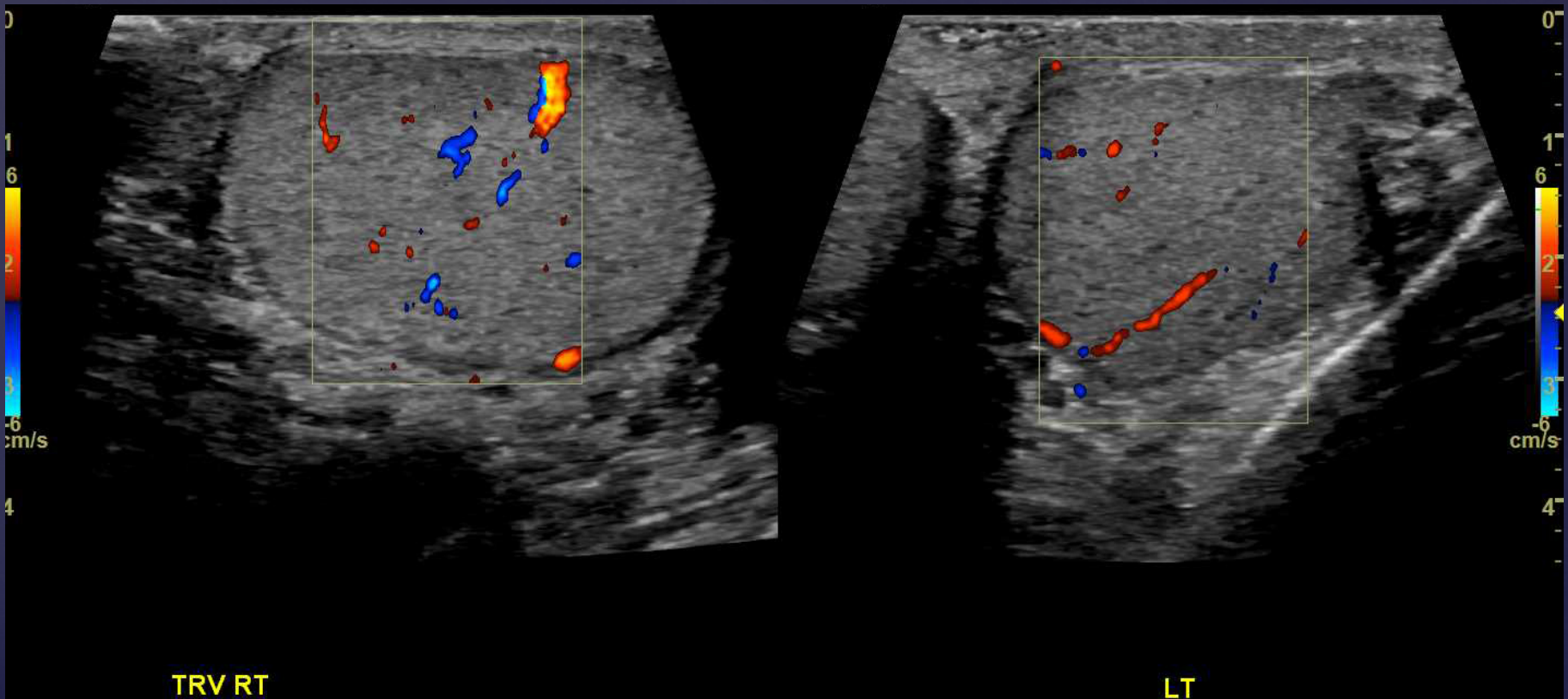
Epididymis Body and Tail



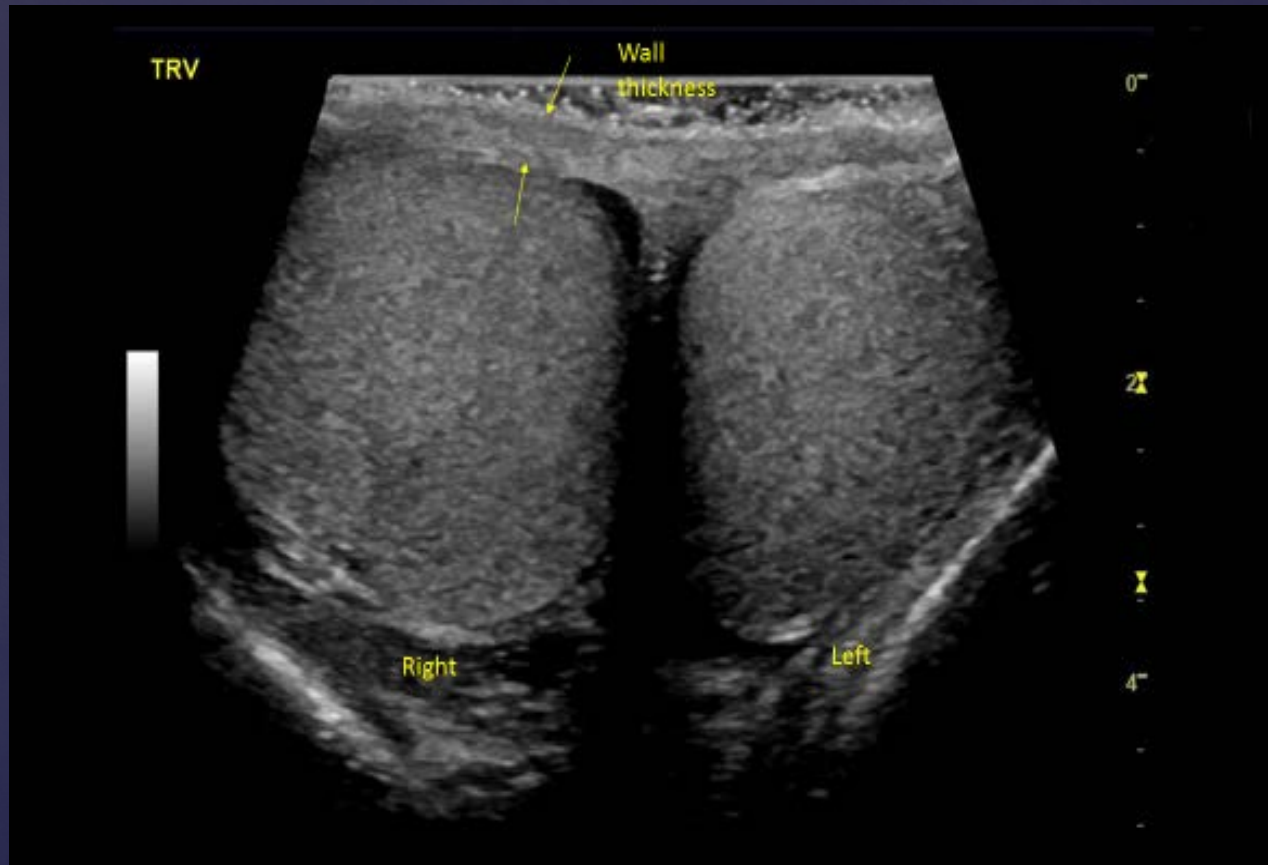
Testes – Comparison



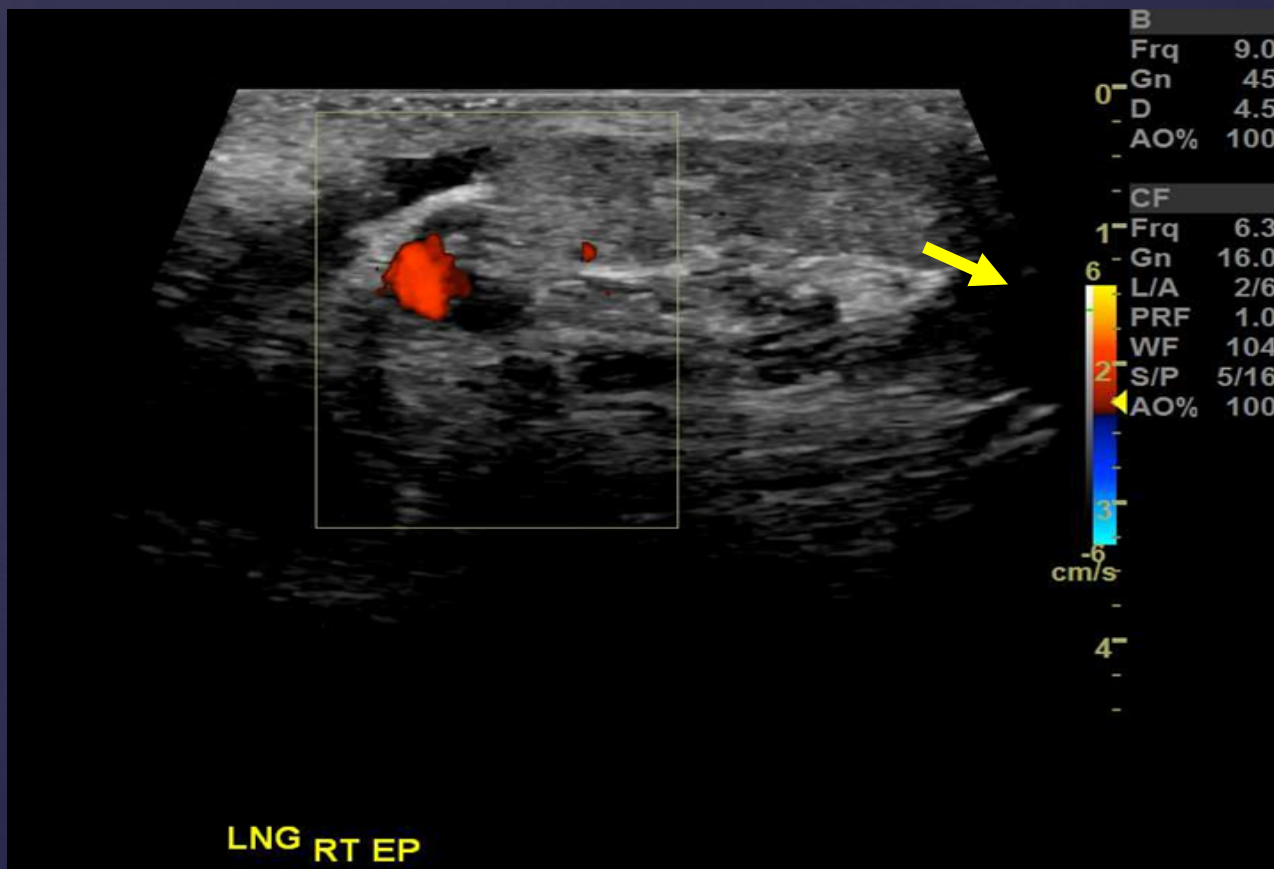
Testes – Comparison with Color Flow



Scrotal Wall Thickness



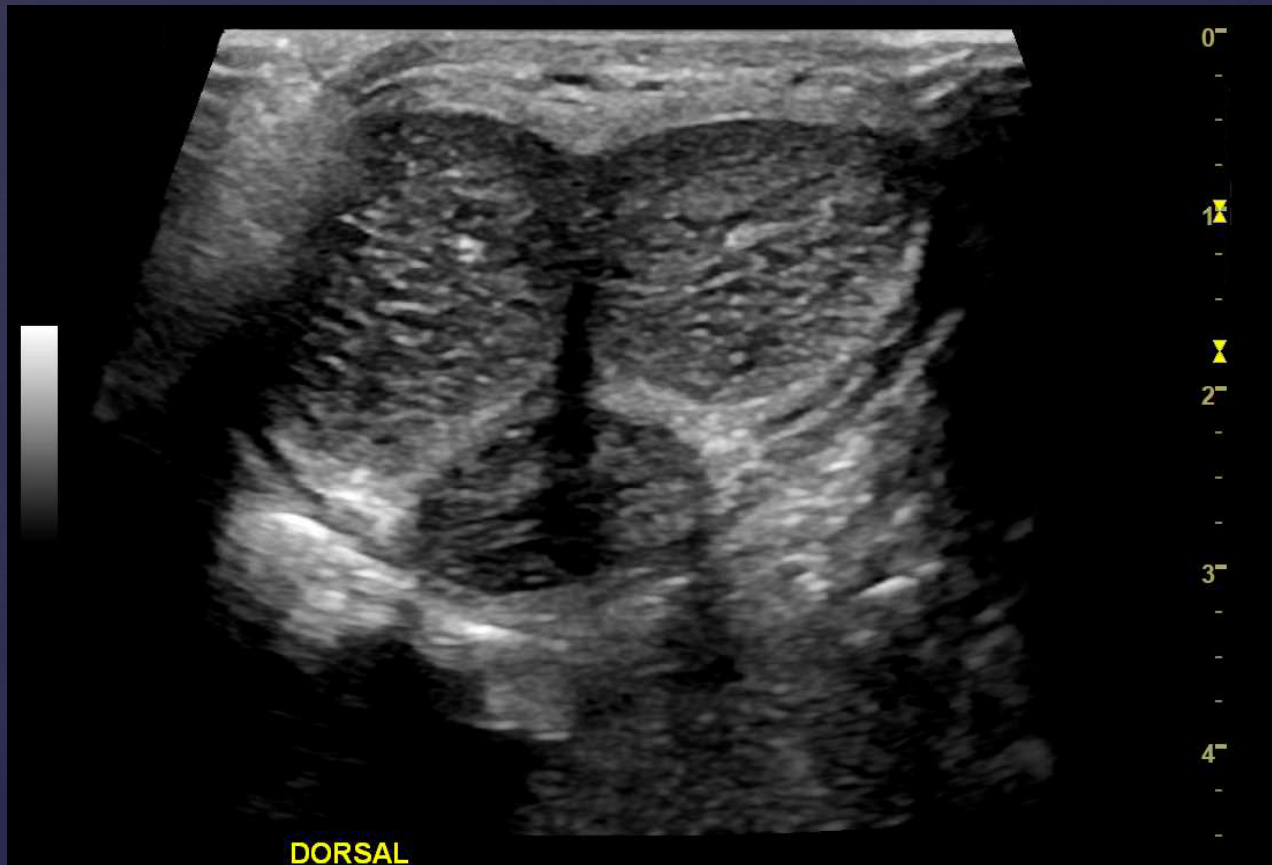
Low Flow Setting



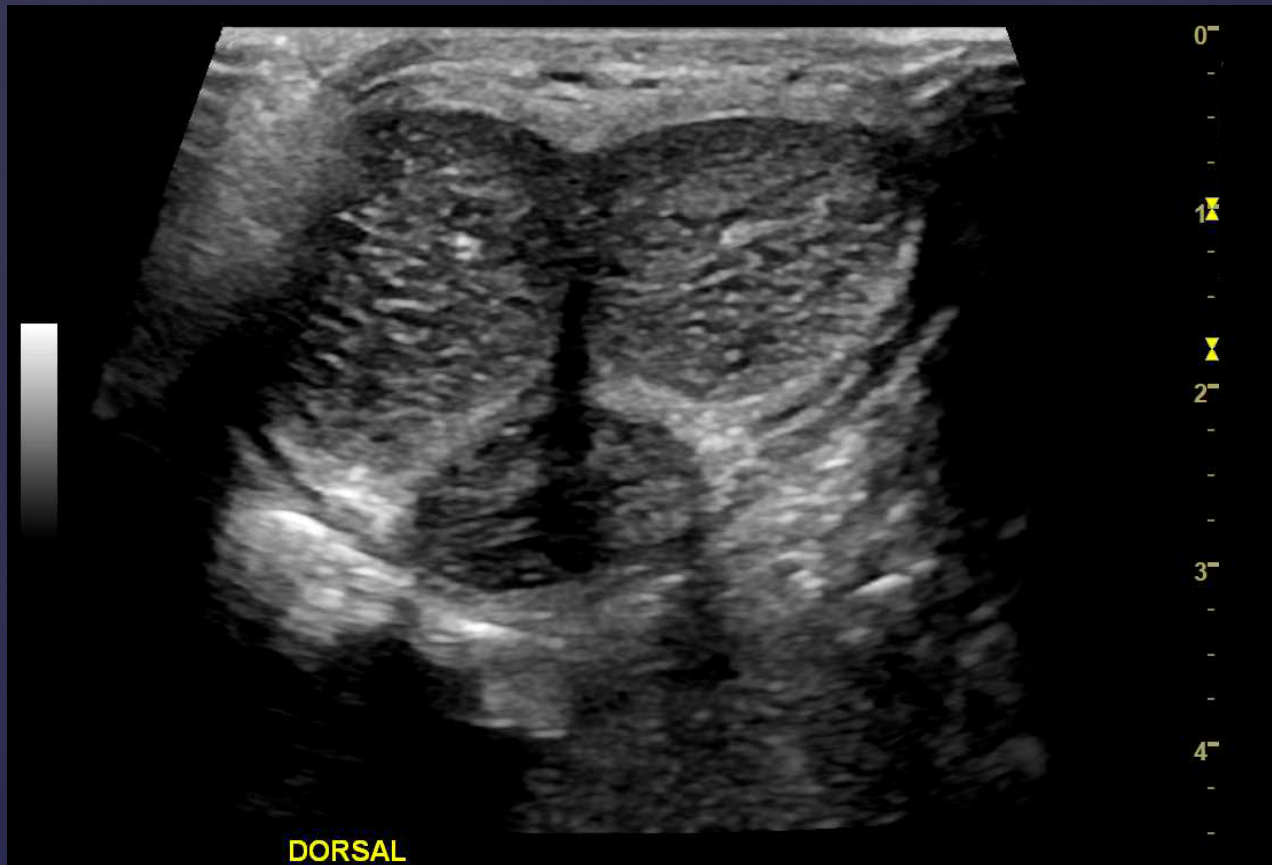
Transverse Penile Ventral



Transverse Penile Dorsal



Penile Dorsal Transverse Proximal



Penile – Mid



Dorsal



Ventral

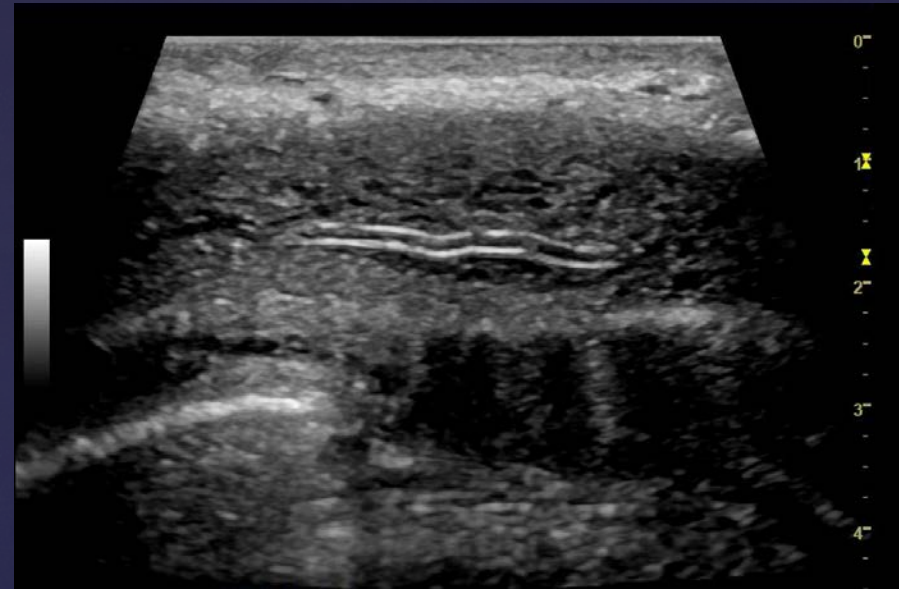
Penile Ventral Transverse Distal



Penile – Ventral

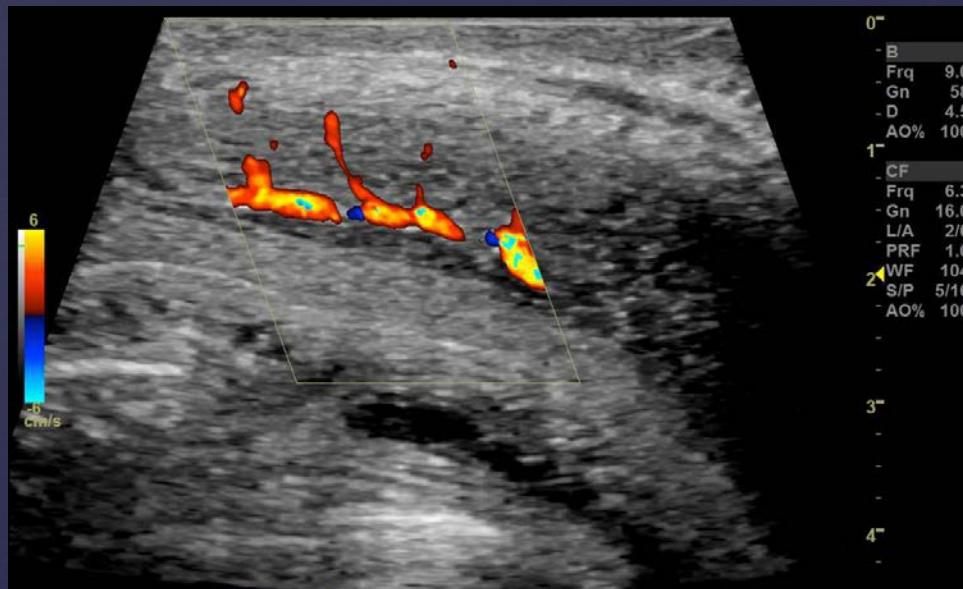


Long Left

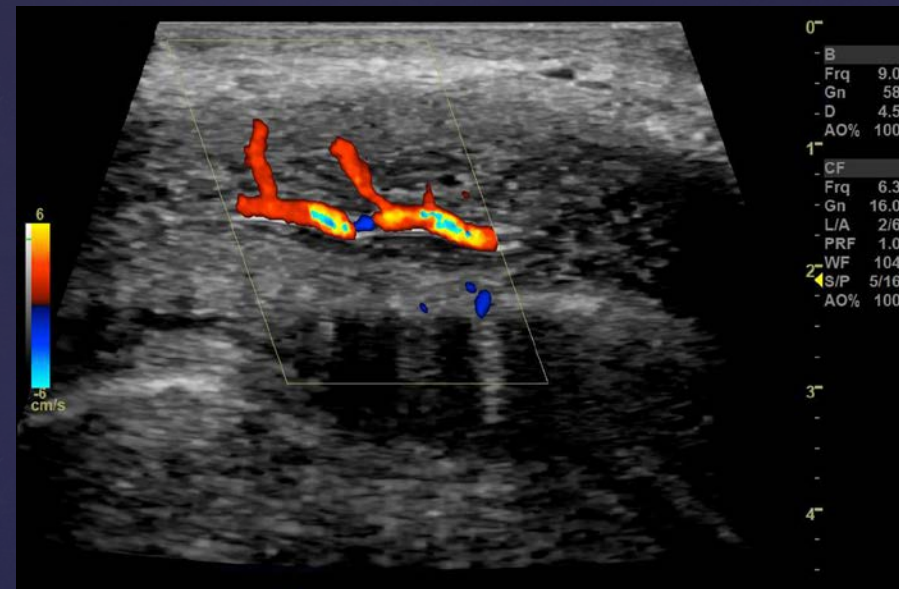


Long Right

Penile – Ventral Color Flow



Long Left



Long Right